



# **Bendix Parts Catalog**

**CATALOG 01-K-01**

*Air Compressors*

# **TU-FLO 700**

OE PC.NO.	REMAN PC.NO.	PAGE NO.
101139	101158	01-K-30
101145	289340	01-K-12
101158	101158	01-K-30
101255	101256	01-K-6
101256	101256	01-K-6
101273	101282	01-K-26
101280	289349	01-K-10
101282	101282	01-K-26
101378	289925	01-K-26
101387	289342	01-K-30
101418	101158	01-K-30
101545	101554	01-K-32
101554	101554	01-K-32
101575	101589	01-K-22
101576	101590	01-K-22
101589	101589	01-K-22
101590	101590	01-K-22
101635	101636	01-K-32
101636	101636	01-K-32
101646	101158	01-K-32
101648	289924	01-K-8
101649	289925	01-K-26
101650	289941	01-K-26
101651	101636	01-K-32
101861	101884	01-K-20
101884	101884	01-K-20
101964	289789	01-K-26
101965	289789	01-K-26
101966	101158	01-K-30
101969	289925	01-K-26
101970	289789	01-K-26
101971	289789	01-K-26
101972	101158	01-K-30
101974	289925	01-K-26
102022	102089	01-K-14
102037	101158	01-K-30
102038	289350	01-K-6
102039	289339	01-K-24
102040	101158	01-K-30
102041	289350	01-K-6
102042	289339	01-K-24
102089	102089	01-K-14
102136	289344	01-K-28
102137	102137	01-K-28
102143	289941	01-K-26
102151	289941	01-K-26
102153	101158	01-K-30
102154	101158	01-K-30
102193	289349	01-K-10
102211	102213	01-K-8
102213	102213	01-K-8
102231	102213	01-K-8
102267	102290	01-K-14
102286	289344	01-K-28
102289	102290	01-K-14
102290	102290	01-K-14
102302	289925	01-K-26
102305	289349	01-K-10

OE PC.NO.	REMAN PC.NO.	PAGE NO.
102540	101158	01-K-30
102541	289789	01-K-26
102542	289789	01-K-26
102543	101158	01-K-30
102561	102598	01-K-8
102562	106791	01-K-26
102596	102598	01-K-8
102598	102598	01-K-8
102629	289925	01-K-26
102630	101256	01-K-6
102631	289350	01-K-6
102632	101256	01-K-6
102784	289342	01-K-30
102823	102835	01-K-26
102835	102835	01-K-26
102850	289348	01-K-16
102851	289348	01-K-16
102945	289340	01-K-12
102964	101158	01-K-30
102965	289350	01-K-6
102966	289339	01-K-24
102967	289925	01-K-26
102968	289925	01-K-26
102978	101884	01-K-20
102979	289349	01-K-10
103042	103152	01-K-18
103048	103051	01-K-6
103276	103278	01-K-10
103277	103278	01-K-10
103278	103278	01-K-10
103918	289925	01-K-26
103968	289340	01-K-12
104176	104189	01-K-6
104188	104189	01-K-6
104189	104189	01-K-6
104305	289340	01-K-12
104306	289340	01-K-12
104307	289340	01-K-12
104329	103278	01-K-10
104356	289342	01-K-30
104601	289925	01-K-26
104715	289925	01-K-26
104716	106791	01-K-26
104977	289348	01-K-16
104978	289340	01-K-12
104979	289340	01-K-12
106265	106268	01-K-26
106268	106268	01-K-26
106287	106268	01-K-26
106381	106268	01-K-26
106791	106791	01-K-26
106792	106792	01-K-26
106793	106793	01-K-34
289159	289336	01-K-18
289238	289350	01-K-6
289246	289348	01-K-16
289251	289340	01-K-12
289257	289347	01-K-14

OE PC.NO.	REMAN PC.NO.	PAGE NO.
289258	289349	01-K-10
289262	289925	01-K-26
289263	289915	01-K-34
289264	289790	01-K-34
289265	289925	01-K-26
289267	289941	01-K-26
289276	289342	01-K-30
289281	289925	01-K-26
289282	106793	01-K-34
289289	289941	01-K-26
289290	106791	01-K-26
289292	289789	01-K-26
289300	289339	01-K-24
289301	289339	01-K-24
289318	289342	01-K-30
289321	289925	01-K-26
289323	289925	01-K-26
289327	289342	01-K-30
289328	289925	01-K-26
289330	289344	01-K-28
289331	289342	01-K-30
289333	106792	01-K-26
289336	289336	01-K-18
289337	289336	01-K-18
289339	289339	01-K-24
289340	289340	01-K-12
289342	289342	01-K-30
289344	289344	01-K-28
289346	289339	01-K-24
289347	289347	01-K-14
289348	289348	01-K-16
289349	289349	01-K-10
289350	289350	01-K-6
289351	289925	01-K-26
289743	289744	01-K-10
289744	289744	01-K-10
289789	289789	01-K-26
289790	289790	01-K-34
289811	289925	01-K-26
289838	289789	01-K-26
289847	289924	01-K-8
289863	289941	01-K-26
289864	289941	01-K-26
289865	289350	01-K-6
289866	289925	01-K-26
289867	289969	01-K-6
289868	289964	01-K-34
289915	289915	01-K-34
289924	289924	01-K-8
289925	289925	01-K-26
289940	289941	01-K-26
289941	289941	01-K-26
289964	289964	01-K-34
289965	289789	01-K-26
289966	289339	01-K-24
289969	289969	01-K-6

The TU-FLO 700 Compressor is an engine driven, two cylinder, reciprocating compressor with a displacement of 15½ cu. ft. per min. at 1250 R.P.M.

It's available in an engine lubricated configuration and employs a water cooled cylinder head and block. It is available in belt drive, direct drive single flange and direct drive double flange configurations.

### OPERATING LIMITATIONS:

Maximum crankshaft speed - 3000 R.P.M.

Maximum discharge temperature - 400 °F.

For installation and maintenance information see service data SD-01-5.

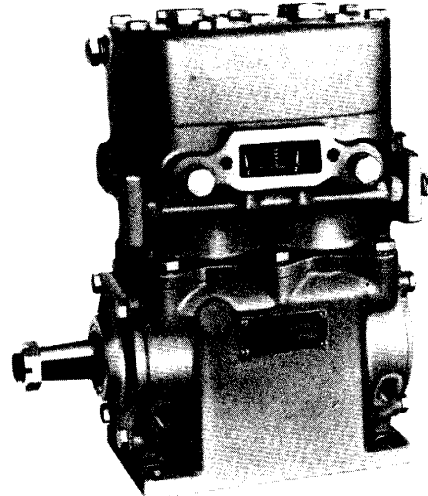
VMRS No. 13-009-001

### EXCHANGE AND CHANGEVER INFORMATION

The TU-FLO 700 Air Compressors are available with either an original equipment piece number, service new piece number or a remanufactured/exchange number. Common detail parts and dimensional information are illustrated in the compressor line drawings preceding each catalog page. Conversion and changeover information is featured prominently in the same position on each page for ease of use.

### FIELD MAINTENANCE KITS & SERVICE PARTS

DESCRIPTION	PIECE NUMBER	JOURNAL OR BORE SIZE
Field Maintenance Kit (with Ⓟ on head)	229417	—
Field Maintenance Kit (without Ⓟ on head)	289998	—
Unloader Kit	279615	—
Piston Ring Set (Std.)	282525	—
Piston Ring Set (.010 O.S.)	282526	—
Piston Ring Set (.020 O.S.)	282527	—
Piston Ring Set (.030 O.S.)	282528	—
Piston & Wrist Pin Set (Std.)	289891	2.748
Piston & Wrist Pin Set (.010 O.S.)	289892	2.758
Piston & Wrist Pin Set (.020 O.S.)	289893	2.768
Piston & Wrist Pin Set (.030 O.S.)	289894	2.778
Alum. Conn. Rod w/o Inserts	289187	—
Alum. Conn. Rod w/Std Inserts	289186	1.125
Steel Conn. Rod w/o Inserts	289775	—
Steel Conn. Rod w/Std Inserts	289770	1.125
Conn. Rod Insert Kit (Std.) (Each kit contains 2 inserts)	282767	1.125
Conn. Rod Insert Kit (.010 O.S.) (Each kit contains 2 inserts)	282768	1.115
Conn. Rod Insert Kit (.020 O.S.) (Each kit contains 2 inserts)	282769	1.105
Conn. Rod Insert Kit (.030 O.S.) (Each kit contains 2 inserts)	282770	1.095
Discharge Valve Kit	102727	—



TU-FLO 700

KEY NO.	QTY.	PC. NO.	DESCRIPTION
—	1	D	<b>Cylinder Head Complete</b>
—	1	D	Cylinder Head
1	2	D	Inlet Valve Spring Seat
2	2	D	Spring Insert
3	2	D	Discharge Valve Seat
4	2	D	Discharge Valve
5	2	D	Cap Nut
6	2	D	Discharge Valve Spring
7	1	B	<b>Cylinder Head Gasket</b>
—	1	D	<b>Cylinder Block Complete</b>
—	1	D	Cylinder Block Body Comp.
8	1	D	Cylinder Block Body
9	2	D	Inlet Valve Seat
10	2	D	Bushing
11	2	A, B	Unloader Piston
12	1	A, B	Unloader Spring Seat
13	1	A, B	Unloader Spring
14	2	A, B	Plunger Guide
15	2	A, B	Unloader Plunger
16	1	A, B	Unloader Spring Saddle
17	1	294241	<b>Cylinder Block Gasket</b>
18	2	B	Inlet Valve Spring
19	2	B	Inlet Valve
20	2	B	Inlet Valve Guide
21	1	A, B	Strainer Gasket
22	1	236577	Governor Gasket
—	1	D	<b>Crankcase &amp; Crankshaft Comp.</b>
23	1	D	Crankcase
24	1	D	Crankshaft
25	1	D	Nut
26	1	D	Crankshaft Key
27	1	D	Front Bearing
28	1	D	Thrust Washer
29	1	D	Rear Bearing
30	1	D	End Cover Gasket/O-Ring
31	1	D	End Cover
32	4	—	Lockwasher
33	4	—	Cap Screw

When servicing the discharge valve the cylinder head must first be identified.

The new style cylinder head can be identified by a ① either stamped or cast into the top of the head. If a ② is present the discharge valve should be serviced with the following details:

- 1 - Cap Nut 236215
- 1 - Valve 230935\*
- 1 - Seat 294751
- 1 - Spring 292375\*

\*Included in kit 229417.

Old style cylinder heads may be serviced by replacing the existing spring, seat, plug, cap nut & discharge valve with discharge valve kit 102727. Do not use kit 102727 with the new style cylinder head.

**DISCHARGE VALVE KIT 102727 CONSISTS OF:**

KEY NO.	QTY.	DESCRIPTION
3	2	Discharge Valve Seat
4	2	Discharge Valve
5	2	Cap Nut
6	2	Discharge Valve Spring

KEY NO.	QTY.	PC. NO.	DESCRIPTION
—	2	C	<b>Connecting Rod Complete</b>
34	2	C	Connecting Rod & Cap Complete
35	4	C	Cap Screw
36	2	C	Wrist Pin Bushing
37	4	C	Wrist Pin Button
38	4	C	Bearing Insert
—	2	C	<b>Piston &amp; Wrist Pin Set</b>
39	2	C	Wrist Pin
40	2	C	Piston
—	1	C	<b>Piston Ring Set</b>
41	6	C	Standard Piston Ring
42	4	C	Standard Oil Ring
43	4	C	Expander Ring

- A - Furnished in unloader kit 279615
- B - Furnished in maintenance kit 229417 & 289998
- C - Available only in sets shown on page 01-K-3
- D - Piece No. listed in subassy. & detail reference sections.

**COMPRESSOR MAINTENANCE KIT 229417 CONSISTS OF: (WITH ① ON HEAD)**

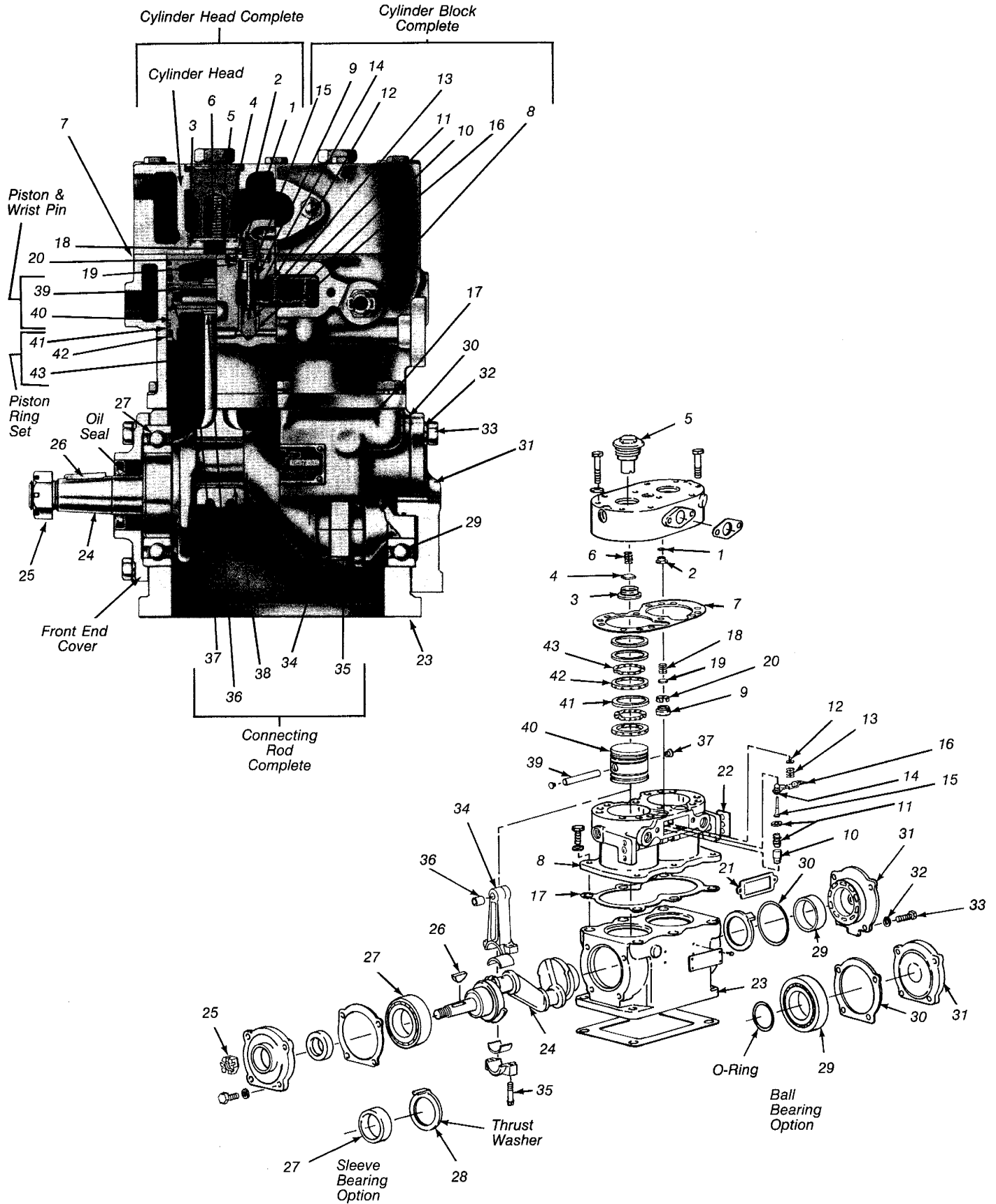
KEY NO.	QTY.	DESCRIPTION
—	1	Unloader Kit 279615
—	1	Discharge Fitting Gasket
4	1	Discharge Valve
6	1	Discharge Valve Spring
7	1	Cylinder Head Gasket
18	2	Inlet Valve Spring
19	2	Inlet Valve
—	1	Governor Gasket
20	2	Inlet Valve Guide

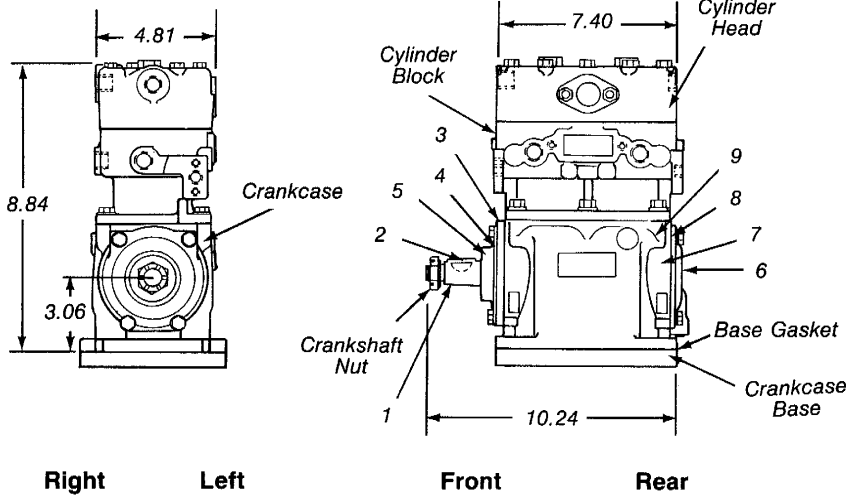
**COMPRESSOR MAINTENANCE KIT 289998 CONSISTS OF: (WITHOUT ① ON HEAD)**

KEY NO.	QTY.	DESCRIPTION
—	1	Discharge Valve Kit 102727
—	1	Unloader Kit 279615
—	1	Discharge Fitting Gasket
7	1	Cylinder Head Gasket
18	2	Inlet Valve Spring
19	2	Inlet Valve
—	1	Governor Gasket
20	2	Inlet Valve Guide

**UNLOADER KIT 279615 CONSISTS OF:**

KEY NO.	QTY.	DESCRIPTION
11	2	Unloader Piston
12	1	Unloader Spring Seat
13	1	Unloader Spring
14	2	Plunger Guide
15	2	Unloader Plunger
16	1	Unloader Spring Saddle
21	1	Strainer Gasket





**PARTS LIST/GENERAL INFORMATION**

KEY NO.	QTY.	DESCRIPTION	PC. NO.
1	1	Crankshaft	292616
2	1	Crankshaft Key	211347
3	1	Front End Cover	230920
4	1	Front Seal	243053
5	1	Ball Bearing	235440
6	1	Rear End Cover	275969
7	1	Thrust Washer	240576
8	1	End Cover Gasket	235425
9	1	O-Ring	239189

**ORIGINAL EQUIPMENT  
REMANUFACTURED EXCHANGE**

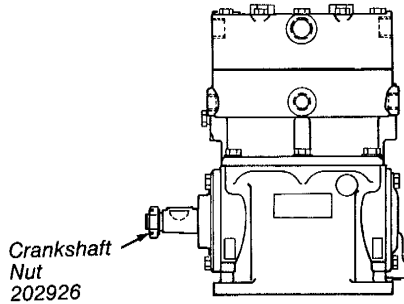
**ORIGINAL EQUIPMENT**

O. E. COMPRESSOR PC. NO.	RMFR. EXCHANGE PC. NO.	CUSTOMER IDENTIFICATION
101255	101256	—
102038	289350	Navistar 540514-C91
102041	289350	—
102630	101256	—
102631	289350	—
102632	101256	—
102965	289350	Navistar 540514-C93

O. E. COMPRESSOR PC. NO.	RMFR. EXCHANGE PC. NO.	CUSTOMER IDENTIFICATION
103048	103051	—
104176	104189	—
104188	104189	—
289238	289350	—
289865	289350	—
289867	289969	—

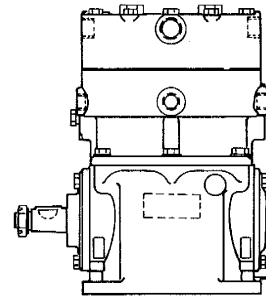
**REMANUFACTURED EXCHANGE**

RMFR. EXCHANGE PC. NO.	AIR INLET LOCATION	AIR DISCHARGE LOCATION	CRANK-SHAFT NUT	CRANK-CASE	FRONT END COVER STUDS	CRANK-CASE BASE	CRANK-CASE BASE GASKET	OIL INLET	CYLINDER HEAD COMPLETE	CYLINDER BLOCK COMPLETE
101256	Right	Right	202926	237395	—	—	—	Rear	289161	289163
103051	Right	Right	245212	237395	—	—	—	Rear	289161	289163
104189	Left	Left	245212	237395	246329	—	—	Rear	289161	289163
289350	Left	Left	245212	237395	—	—	—	Rear	289161	289163
289969	Left	Left	245212	293056	—	239012	236590	Rear	289161	289949

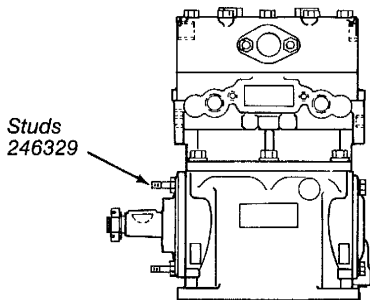


Crankshaft  
Nut  
202926

Pc. No. 101256

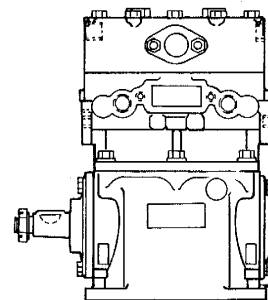


Pc. No. 103051

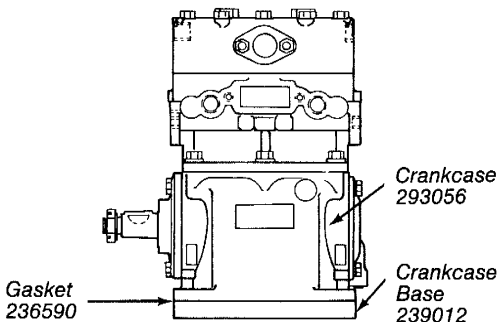


Studs  
246329

Pc. No. 104189



Pc. No. 289350

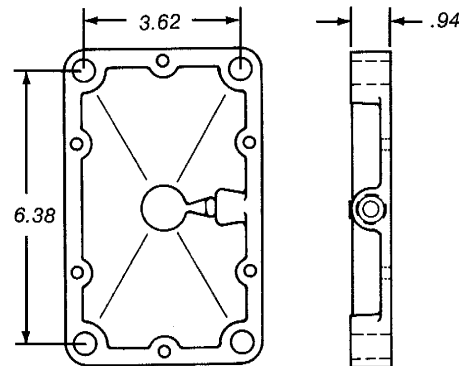


Gasket  
236590

Crankcase  
293056

Crankcase  
Base  
239012

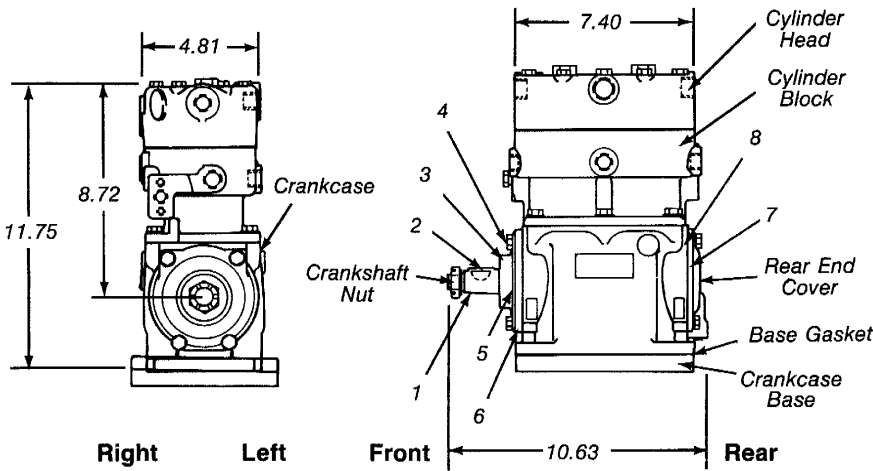
Pc. No. 289969



Crankcase  
Base 239012

## RX CHANGEOVER

RMFR. EXCH. PC. NOS.	CHANGEOVER TO/FROM				COMPRESSOR APPLICATION
	TF-400	TF-500	TF-501	TF-600	
101256	227403	227322	286527	280604	
103051	227403	227322	286527	280604	
104189	—	279046	102698	—	
289350	227402	228140	286526	280613	Cat. 3208
289969	—	228661	—	286836	



**PARTS LIST/GENERAL INFORMATION**

KEY NO.	QTY.	DESCRIPTION	PC. NO.
1	1	Crankshaft	292616
2	1	Crankshaft Key	211347
3	1	Front End Cover	230920
4	1	Front Seal	243053
5	1	Ball Bearing	235440
6	1	End Cover Gasket	235425
7	1	Thrust Washer	240576
8	1	O-Ring	239189

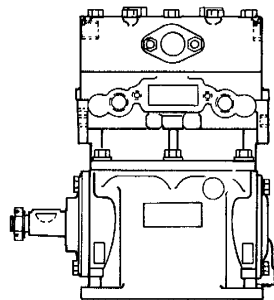
**ORIGINAL EQUIPMENT  
REMANUFACTURED EXCHANGE**

**ORIGINAL EQUIPMENT**

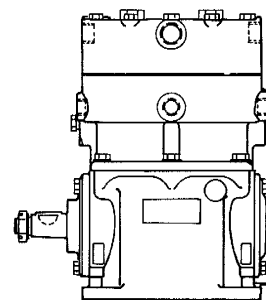
O.E. COMPRESSOR PC. NO.	RMFR. EXCHANGE PC. NO.	CUSTOMER IDENTIFICATION
101648	289924	GMC 8921206
289847	289924	—
102561	102598	Ford E1HS-2875-BA
102596	102598	—
102211	102213	—
102231	102213	—

**REMANUFACTURED EXCHANGE**

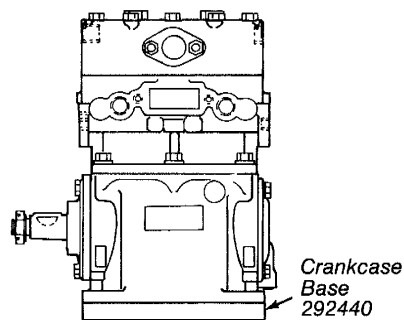
RMFR. EXCHANGE PC. NO.	AIR INLET LOCATION	AIR DISCHARGE LOCATION	CRANK-SHAFT NUT	CRANK-CASE	CRANK-CASE BASE	CRANKCASE BASE GASKET	OIL INLET	REAR END COVER	CYLINDER HEAD COMPLETE	CYLINDER BLOCK COMPLETE
289924	Right	Right	202926	235905	—	—	Rear & Bottom	276363	289161	289163
102598	Left	Left	245212	246074	292440	292518	Rear	275969	289161	289163
102213	Left	Left	202926	235905	—	—	Rear & Bottom	276363	289161	289163



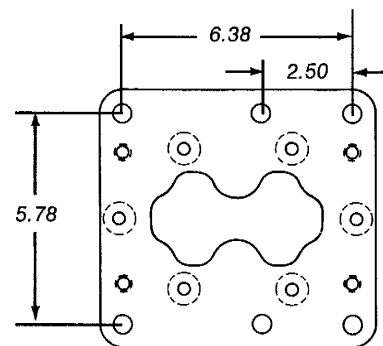
PC. NO. 102213



PC. NO. 289924



PC. NO. 102598



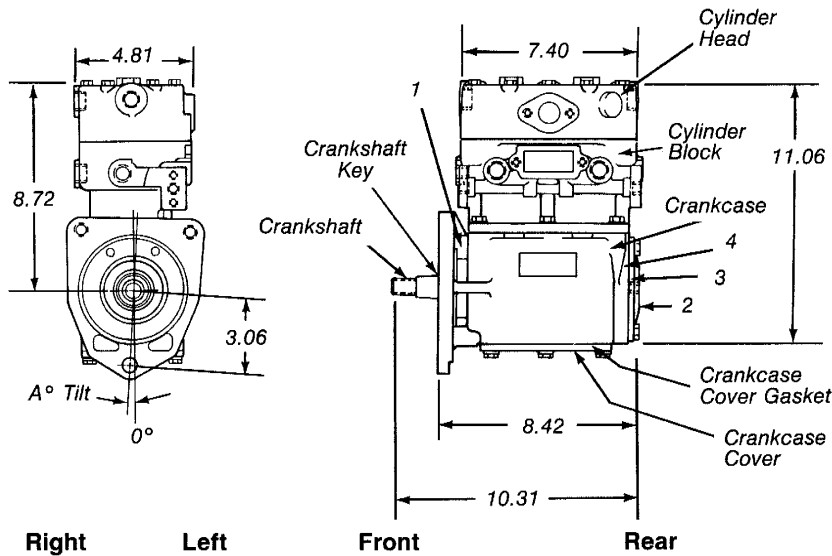
Crankcase Base 292440

## RX CHANGEOVER

RMFR. EXCH. PC. NOS.	CHANGEOVER TO/FROM				COMPRESSOR APPLICATION
	TF-400	TF-500	TF-501	TF-600	
102213	227409	227331	286578	280610	
102598	101142	—	286585	—	Cat. 3208
289924	227410	227332	286535	280611	

**PARTS LIST/GENERAL INFORMATION**

KEY NO.	QTY.	DESCRIPTION	PC. NO.
1	1	Thrust Washer	246439
2	1	Rear End Cover	275969
3	1	O-Ring	239189
4	1	Thrust Washer	240576



**ORIGINAL EQUIPMENT  
REMANUFACTURED EXCHANGE**

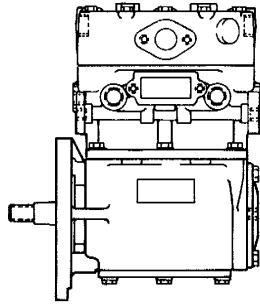
**ORIGINAL EQUIPMENT**

O.E. COMPRESSOR PC. NO.	RMFR. EXCHANGE PC. NO.	CUSTOMER IDENTIFICATION
101280	289349	Volvo-White 70001-0019
102305	289349	—
102979	289349	Cat. 2W5135
103276	103278	Cat. IN2992

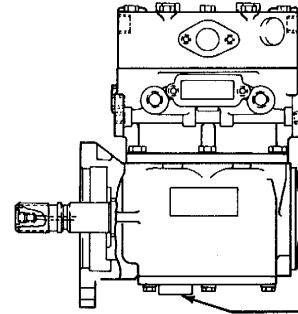
O.E. COMPRESSOR PC. NO.	RMFR. EXCHANGE PC. NO.	CUSTOMER IDENTIFICATION
103277	103278	—
104329	103278	—
289258	289349	—
289743	289744	—

**REMANUFACTURED EXCHANGE**

RMFR. EXCHANGE PC. NO.	AIR INLET LOCATION	AIR DISCHARGE LOCATION	CRANK-SHAFT NUT	CRANK-CASE	CRANKCASE COVER	CRANKCASE COVER GASKET	CRANK-SHAFT	CRANK-SHAFT KEY	A °	CYLINDER HEAD COMPLETE	CYLINDER BLOCK COMPLETE
103278	Left	Left & Top	—	289733	243598	297544	292858	211347	2½	289161	289163
289349	Left	Left & Top	—	289733	249272	297544	292797	—	0	289161	289163
289744	Left	Left & Top	—	289733	—	—	296691	211347	0	289161	289163

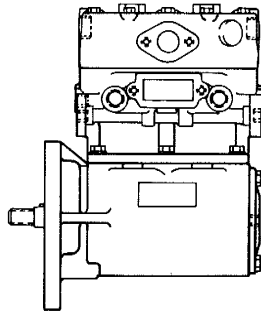


PC. NO. 103278 (2½° TILT)

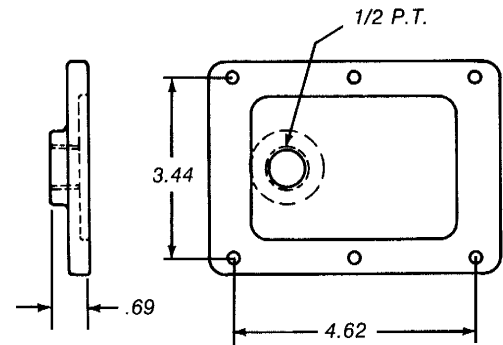


PC. NO. 289349

1/2 P.T. Oil Drain



PC. NO. 289744

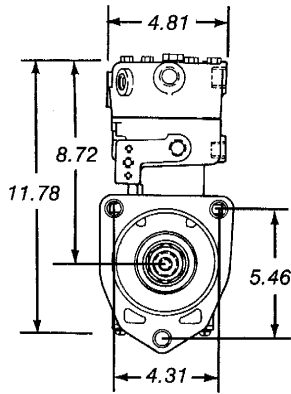


Crankcase  
Cover 249272

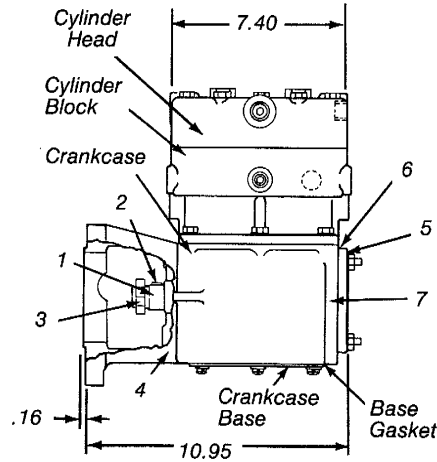
## RX CHANGEOVER

RMFR. EXCH. PC. NOS.	CHANGEOVER TO/FROM				COMPRESSOR APPLICATION
	TF-400	TF-500	TF-501	TF-600	
103278	—	277731	103274	—	Cat. 3406B
289349	—	285131	286546	288710	Cat. 3406
289744	—	284260	*286552	289172	Cat. 3408

\*Requires a Caterpillar Base Bracket



**Right      Left**



**Front      Rear**

**PARTS LIST/GENERAL INFORMATION**

KEY NO.	QTY.	DESCRIPTION	PC. NO.
1	1	Crankshaft	292688
2	1	Crankshaft Key	240586
3	1	Crankshaft Nut	203395
4	1	Thrust Washer	246439
5	1	Rear End Cover	248848
6	1	O-Ring	248853
7	1	Ball Bearing	235440

**ORIGINAL EQUIPMENT  
REMANUFACTURED EXCHANGE**

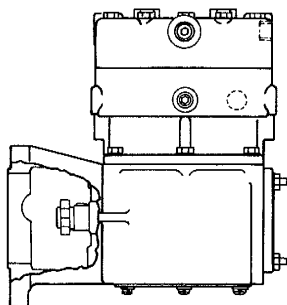
**ORIGINAL EQUIPMENT**

O.E. COMPRESSOR PC. NO.	RMFR. EXCHANGE PC. NO.	CUSTOMER IDENTIFICATION
101145	289340	—
102945	289340	Mack 303-GB-589
103968	289340	Mack 303-GB-590
104305	289340	—
104306	289340	—

O.E. COMPRESSOR PC. NO.	RMFR. EXCHANGE PC. NO.	CUSTOMER IDENTIFICATION
104307	289340	—
104978	289340	—
104979	289340	—
289251	289340	Mack 303-GB-4201-R

**REMANUFACTURED EXCHANGE**

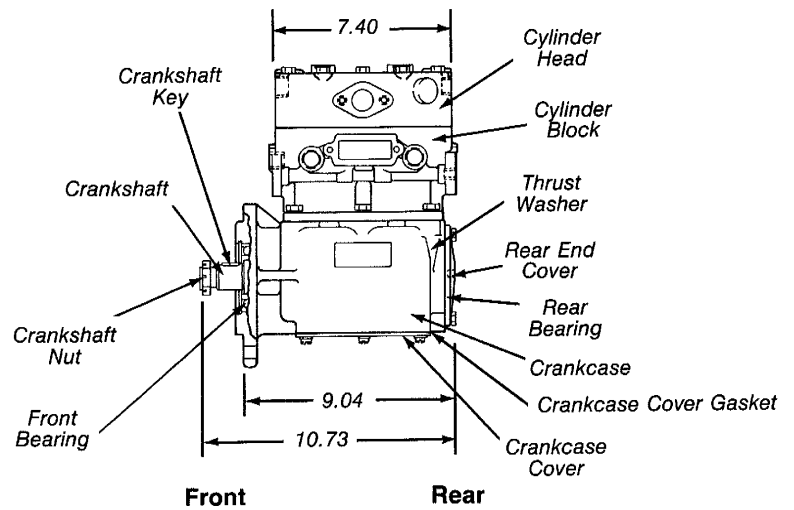
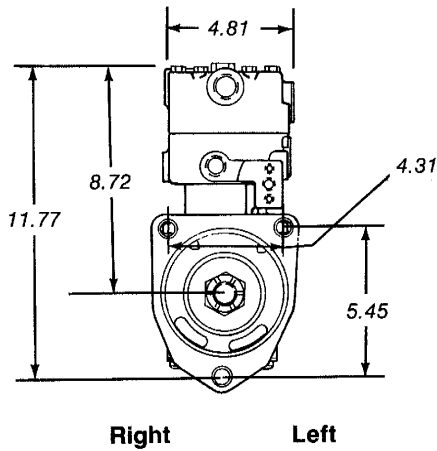
RMFR. EXCHANGE PC. NO.	AIR INLET LOCATION	AIR DISCHARGE LOCATION	CRANK-CASE	CRANKCASE BASE	CRANKCASE BASE GASKET	OIL INLET	CYLINDER HEAD COMPLETE	CYLINDER BLOCK COMPLETE
289340	Right	Right & Top	289581	214789	297544	Crankshaft	289613	289163



**PC. NO. 289340**

**RX CHANGEOVER**

RMFR. EXCH. PC. NOS.	CHANGEOVER TO/FROM				COMPRESSOR APPLICATION
	TF-400	TF-500	TF-501	TF-600	
289340	—	284662	288982	285100	



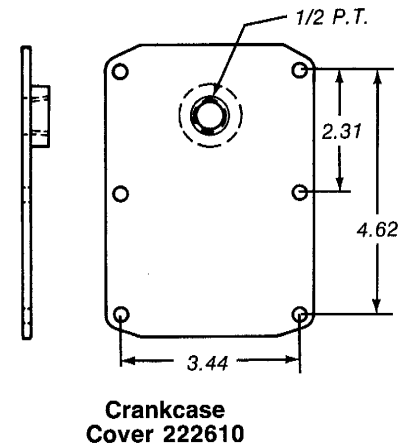
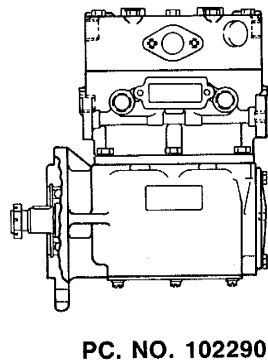
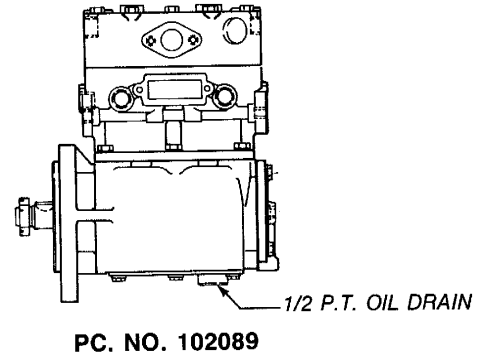
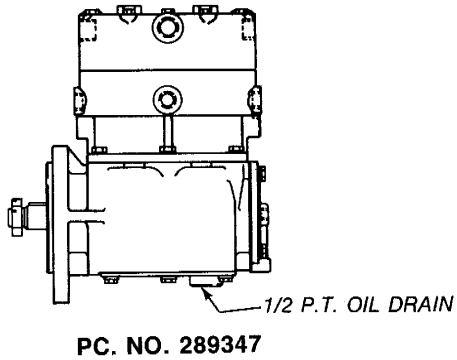
**ORIGINAL EQUIPMENT  
REMANUFACTURED EXCHANGE**

**ORIGINAL EQUIPMENT**

O.E. COMPRESSOR PC. NO.	RMFR. EXCHANGE PC. NO.	CUSTOMER IDENTIFICATION
289257	289347	—
102022	102089	—
102267	102290	Mack 303-GB-4203
102289	102290	—

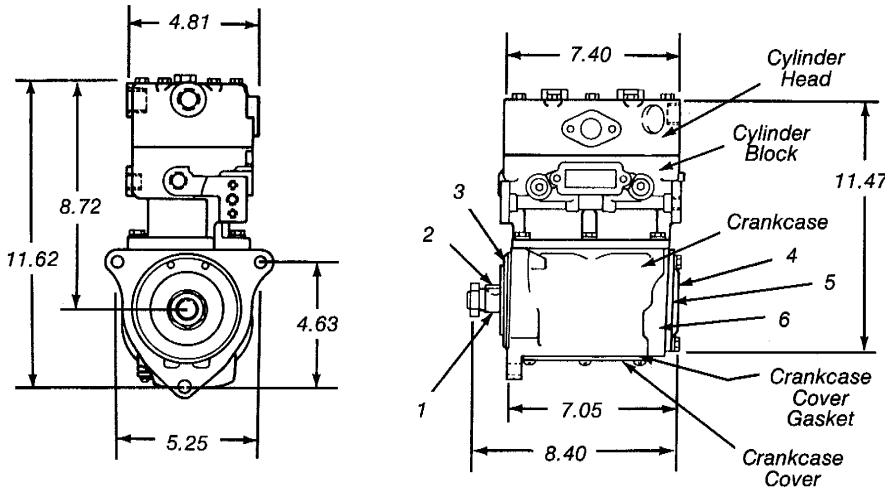
**REMANUFACTURED EXCHANGE**

RMFR. EXCHANGE PC. NO.	AIR INLET LOCATION	AIR DISCHARGE LOCATION	CRANK-SHAFT NUT	CRANK-CASE	CRANK-CASE COVER	CRANKCASE COVER GASKET	CRANK-SHAFT	CRANK-SHAFT KEY	REAR END COVER	REAR BEARING	FRONT BEARING	THRUST WASHER	CYLINDER HEAD COMPLETE	CYLINDER BLOCK COMPLETE
289347	Right	Right & Top	237432	245213	222610	297771	292785	245206	236578	235440	236120	—	289161	289163
102089	Left	Left & Top	237432	245213	222610	297544	292785	245206	236578	235440	236120	—	289161	289163
102290	Left	Left & Top	245212	240301	214789	297544	296086	240260	275969	240745	236120	240576	289161	289163



RMFR. EXCH. PC. NOS.	CHANGEVER TO/FROM				COMPRESSOR APPLICATION
	TF-400	TF-500	TF-501	TF-600	
289347	289822	280737	286563	287828	Volvo
102089	—	—	—	—	Volvo
102290	—	—	286572	288714	Saab-Scania

**PARTS LIST/GENERAL INFORMATION**



KEY NO.	QTY.	DESCRIPTION	PC. NO.
1	1	Crankshaft	292789
2	1	Crankshaft Key	232013
3	1	Ball Bearing	236678
4	1	Rear End Cover	275577
5	1	Thrust Washer	240576
6	1	O-Ring	239189

**ORIGINAL EQUIPMENT  
REMANUFACTURED EXCHANGE**

**ORIGINAL EQUIPMENT**

O.E. COMPRESSOR PC. NO.	RMFR. EXCHANGE PC. NO.	CUSTOMER IDENTIFICATION
102850	289348	Mack 303-GB-4204
102851	289348	—
104977	289348	—
289246	289348	Mack 303-GB-4200R

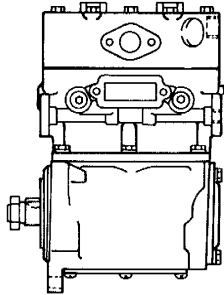
**REMANUFACTURED EXCHANGE**

RMFR. EXCHANGE PC. NO.	AIR INLET LOCATION	AIR DISCHARGE LOCATION	CRANK-SHAFT NUT	CRANK-CASE	CRANK-CASE COVER	CRANKCASE COVER GASKET	OIL INLET	CYLINDER HEAD COMPLETE	CYLINDER BLOCK COMPLETE
289348	Left	Left & Top	203395	240737	243324	292366	Rear	289161	289198

# REMANUFACTURED EXCHANGE BASIC

TU-FLO 700

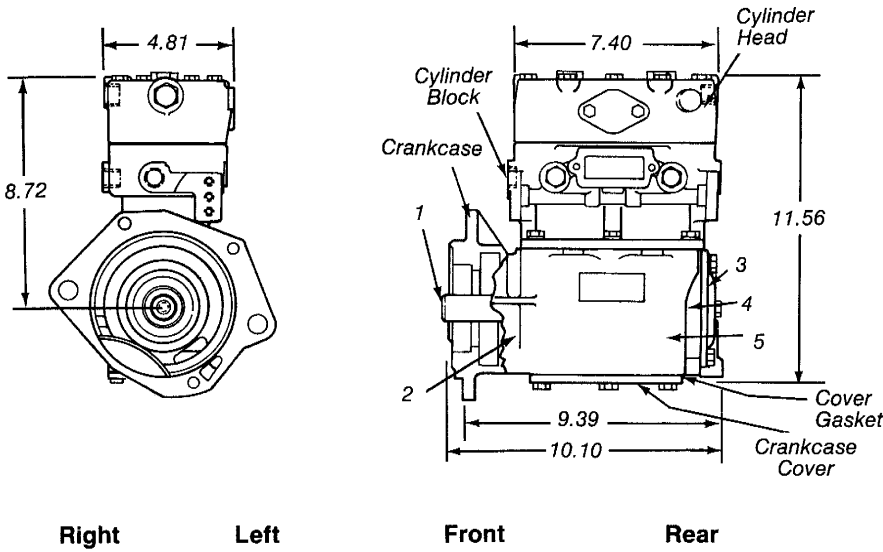
CATALOG  
**01-K-17**



PC. NO. 289348

## RX CHANGEOVER

RMFR. EXCH. PC. NOS.	CHANGEOVER TO/FROM				COMPRESSOR APPLICATION
	TF-400	TF-500	TF-501	TF-600	
289348	—	277122	286574	280628	



**PARTS LIST/GENERAL INFORMATION**

KEY NO.	QTY.	DESCRIPTION	PC. NO.
1	1	Crankshaft	292502
2	1	Thrust Washer	246439
3	1	End Cover	276127
4	1	Thrust Washer	240576
5	1	O-Ring	239189

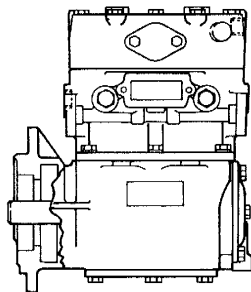
**ORIGINAL EQUIPMENT  
REMANUFACTURED EXCHANGE**

**ORIGINAL EQUIPMENT**

O.E. COMPRESSOR PC. NO.	RMFR. EXCHANGE PC. NO.	CUSTOMER IDENTIFICATION
289159	289336	—
289337	289336	Cat. 2W6835
103042	289336	—

**REMANUFACTURED EXCHANGE**

RMFR. EXCHANGE PC. NO.	AIR INLET LOCATION	AIR DISCHARGE LOCATION	CRANK-SHAFT NUT	CRANK-CASE	CRANKCASE COVER	CRANKCASE COVER GASKET	CYLINDER HEAD COMPLETE	CYLINDER BLOCK COMPLETE
289336	Left	Left	—	289174	243598	292332	289161	289163



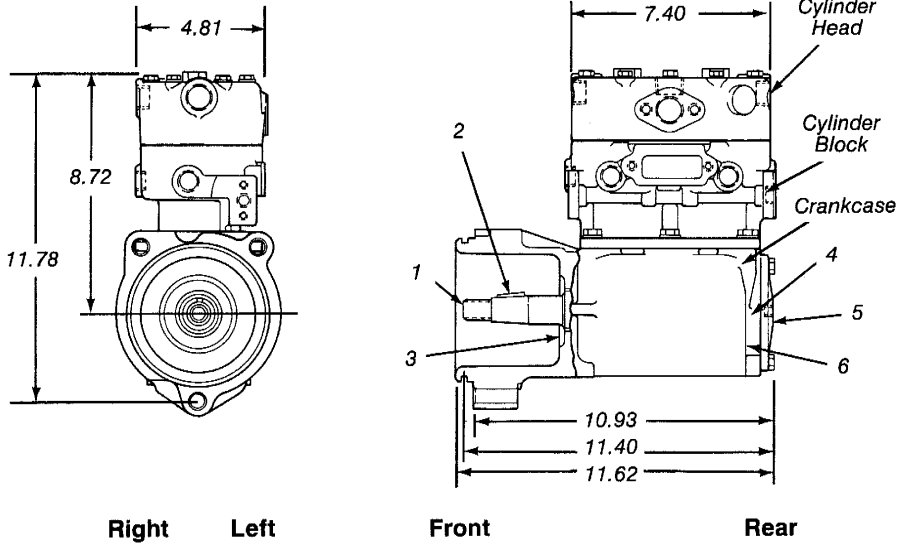
PC. NO. 289336

## RX CHANGEOVER

RMFR. EXCH. PC. NOS.	CHANGEOVER TO/FROM				COMPRESSOR APPLICATION
	TF-400	TF-500	TF-501	TF-600	
289336	—	284790	289043	—	Cat. 3306

**PARTS LIST/GENERAL INFORMATION**

KEY NO.	QTY.	DESCRIPTION	PC. NO.
1	1	Crankshaft	294024
2	1	Crankshaft Key	211347
3	1	Front Thrust Washer	246439
4	1	Rear Thrust Washer	240576
5	1	End Cover	275969
6	1	O-Ring	239189



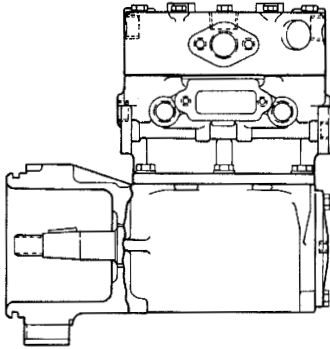
**ORIGINAL EQUIPMENT  
REMANUFACTURED EXCHANGE**

**ORIGINAL EQUIPMENT**

O.E. COMPRESSOR PC. NO.	RMFR EXCHANGE PC. NO.	CUSTOMER IDENTIFICATION
101861	101884	—
102978	101884	Caterpillar 2W5134

**REMANUFACTURED EXCHANGE**

RMFR. EXCHANGE PC. NO.	AIR INLET LOCATION	AIR DISCHARGE LOCATION	CRANK-CASE	CYLINDER HEAD COMPLETE	CYLINDER BLOCK COMPLETE
101884	Left	Left	101862	289161	289163

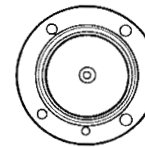
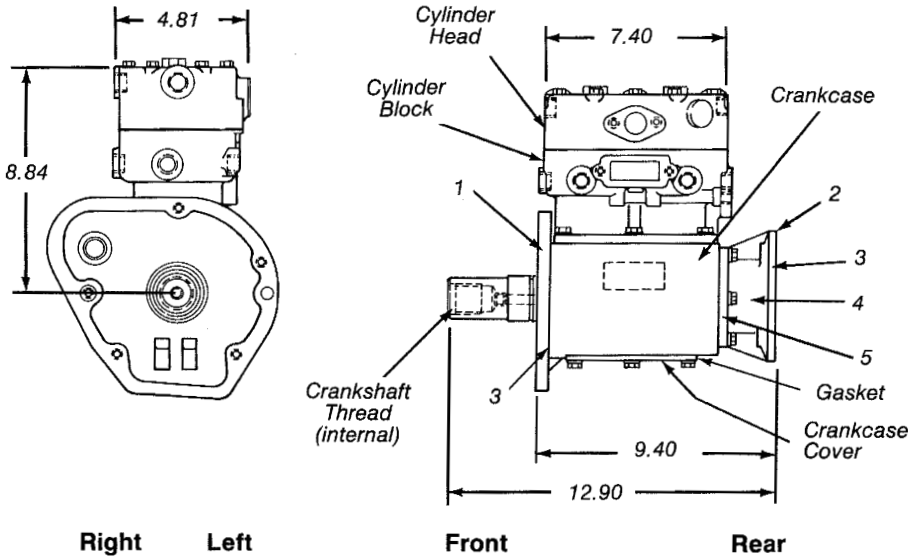


**PC. NO. 101884**

RMFR EXCH. PC. NOS.	CHANGEOVER TO/FROM				COMPRESSOR APPLICATION
	TF-400	TF-500	TF-501	TF-600	
101884			286596		

**PARTS LIST/GENERAL INFORMATION**

KEY NO.	QTY.	DESCRIPTION	PC. NO.
1	1	Front Thrust Washer	240576
2	1	Rear Flange	101583
3	2	Bearing	240745
4	1	Thrust Washer	243870
5	1	O-Ring	239189



**REAR FLANGE**

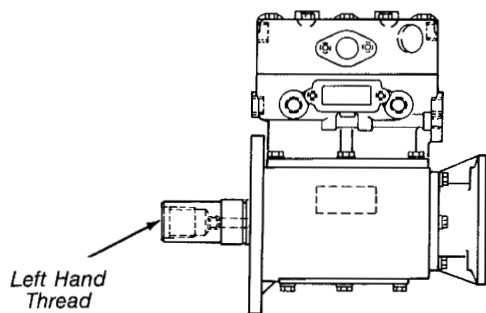
**ORIGINAL EQUIPMENT  
REMANUFACTURED EXCHANGE**

**ORIGINAL EQUIPMENT**

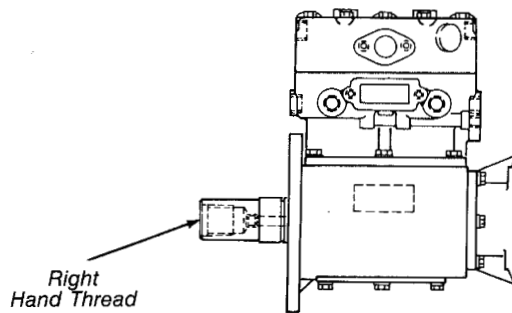
O.E. COMPRESSOR PC. NO.	RMFR. EXCHANGE PC. NO.	CUSTOMER IDENTIFICATION
101575	101589	—
101576	101590	—

**REMANUFACTURED EXCHANGE**

RMFR. EXCHANGE PC. NO.	AIR INLET LOCATION	AIR DISCHARGE LOCATION	CRANK-SHAFT THREAD	CRANK-CASE	CRANKCASE COVER	CRANKCASE GASKET	CYLINDER HEAD COMPLETE	CYLINDER BLOCK COMPLETE
101589	Left	Top & Left	Left Hand	101579	240741	292364	289161	289949
101590	Left	Top & Left	Right Hand	101579	240741	292364	289161	289949



PC. NO. 101589



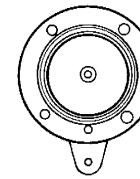
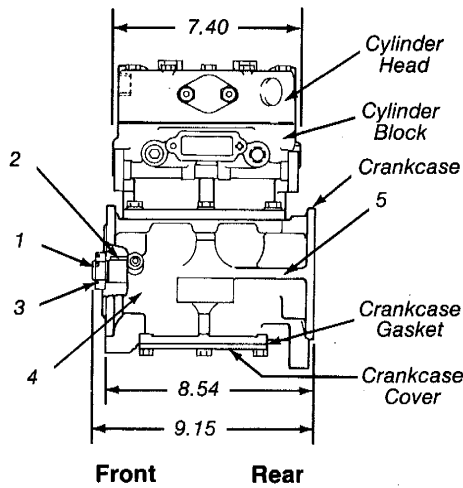
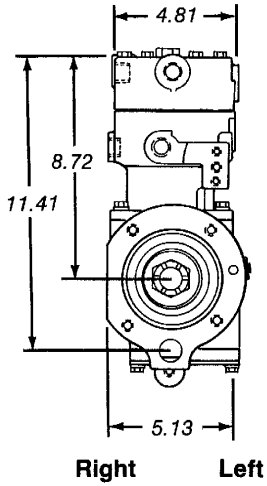
PC. NO. 101590

## RX CHANGEOVER

RMFR. EXCH. PC. NOS.	CHANGEOVER TO/FROM				COMPRESSOR APPLICATION
	TF-400	TF-500	TF-501	TF-600	
101589	—	—	—	—	VT-903 (Coach)
101590	—	283711	286570	—	VT-903

**PARTS LIST/GENERAL INFORMATION**

KEY NO.	QTY.	DESCRIPTION	PC. NO.
1	1	Crankshaft	292719
2	1	Crankshaft Key	237431
3	1	Crankshaft Nut	237432
4	1	Thrust Washer	240576
5	1	Rear Ball Bearing	235440



**Rear Flange**

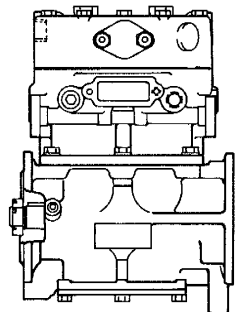
**ORIGINAL EQUIPMENT  
REMANUFACTURED EXCHANGE**

**ORIGINAL EQUIPMENT**

O.E. COMPRESSOR PC. NO.	RMFR. EXCHANGE PC. NO.	CUSTOMER IDENTIFICATION
289300	289339	—
289301	289339	White 904315
289346	289339	—
289966	289339	White 70001-0016
102039	239339	Navistar 53403-C91
102966	289339	Navistar 534043-C94
102042	289339	—

**REMANUFACTURED EXCHANGE**

RMFR. EXCHANGE PC. NO.	AIR INLET LOCATION	AIR DISCHARGE LOCATION	CRANK-CASE	CRANKCASE COVER	CRANKCASE COVER GASKET	CYLINDER HEAD COMPLETE	CYLINDER BLOCK COMPLETE
289339	Left	Left	289558	248783	292367	289161	289163

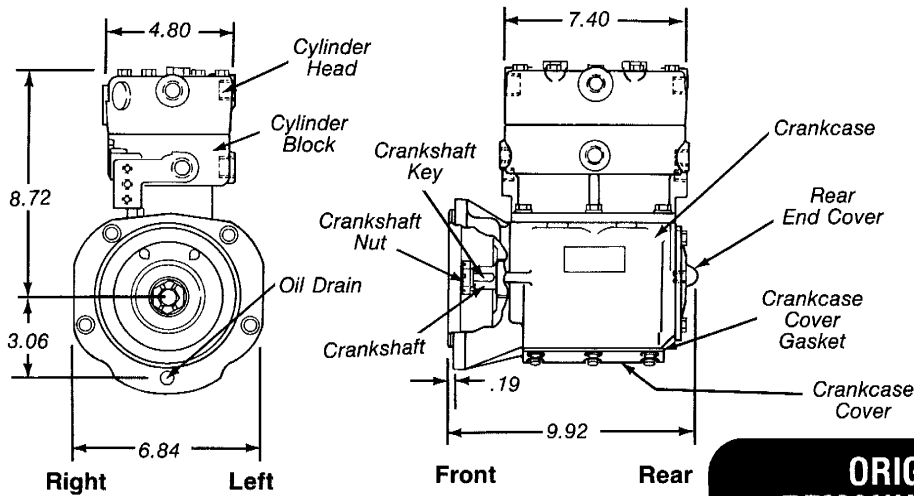


PC. NO. 289339

## RX CHANGEOVER

RMFR. EXCH. PC. NOS.	CHANGEOVER TO/FROM				COMPRESSOR APPLICATION
	TF-400	TF-500	TF-501	TF-600	
289339	—	284699	286554	284714	

When changing over from a competitive compressor or any other Bendix compressor some drive components must also be changed. For more details See Product Bulletin PRO-01-2.



**ORIGINAL EQUIPMENT  
REMANUFACTURED EXCHANGE**

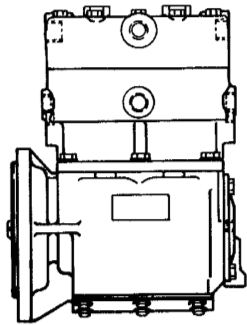
**ORIGINAL EQUIPMENT**

O.E. COMPRESSOR PC. NO.	RMFR. EXCHANGE PC. NO.	CUSTOMER IDENTIFICATION
101273	101282	—
101378	289925	—
101649	289925	—
101650	289941	GMC 8921208
101964	289789	Ford EOHS-2875-AA
101965	289789	—
101969	289925	—
101970	289789	—
101971	289789	—
101974	289925	—
102143	102151	—
102302	289925	—
102541	289789	—
102542	289789	—
102562	106791	—
102629	289925	—
102823	102835	—
102967	289925	—
102968	289925	—
103918	289925	—
104601	289925	—
104715	289925	—

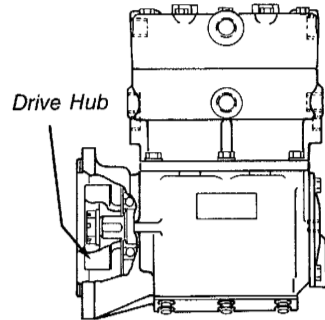
O.E. COMPRESSOR PC. NO.	RMFR. EXCHANGE PC. NO.	CUSTOMER IDENTIFICATION
104716	106791	—
106265	106268	—
106287	106268	—
106381	106268	—
289262	289925	—
289265	289925	—
289267	289941	—
289281	289925	—
289289	289941	—
289290	106791	—
289292	289789	Ford D8HS-2875-AA
289321	289925	—
289323	289925	—
289328	289925	—
289333	106792	—
289351	289925	—
289811	289925	—
289838	289789	Ford D8HS-2875-BA
289863	289941	—
289864	289941	—
289866	289925	—
289940	289941	—
289965	289789	Volvo 70001-0015

**REMANUFACTURED EXCHANGE**

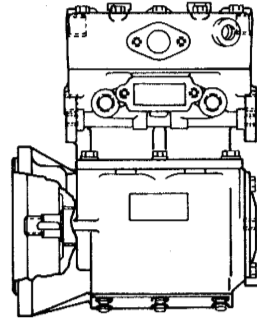
RMFR. EXCHANGE PC. NO.	AIR INLET LOCATION	AIR DISCHARGE LOCATION	CRANK-SHAFT NUT	CRANK-CASE	CRANKCASE COVER	CRANKCASE COVER GASKET	CRANK-SHAFT	KEY	END COVER	DRIVE HUB	CYLINDER HEAD COMPLETE	CYLINDER BLOCK COMPLETE
101282	Right	Right & Top	—	289465	241280	297544	292623	202927	276127	—	289613	289163
102151	Right	Right & Top	202926	292636	241280	297544	292640	231427	231265	293903	289161	289163
102835	Left	Left & Top	245212	289462	241280	297544	292623	202927	276127	—	289613	289163
106268	Left	Left & Top	298125	106267	241280	297544	298113	202927	276127	—	289161	289163
106791	Left	Left & Top	245212	289462	241280	297544	292623	202927	276127	—	289161	289163
106792	Right	Right & Top	245212	289462	241280	297544	292623	202927	276127	—	289161	289163
289789	Right	Right & Top	245212	289462	241280	297544	292623	202927	276114	—	289161	289163
289925	Left	Left & Top	245212	289462	241280	297544	292623	202927	276127	—	289161	289163
289941	Right	Right & Top	245212	289462	241280	297544	292623	202927	276127	—	289161	289163



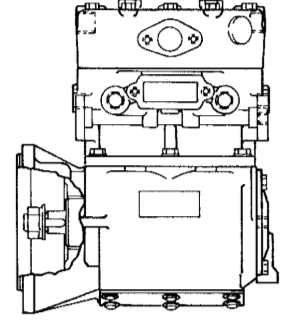
PC. NO. 101282



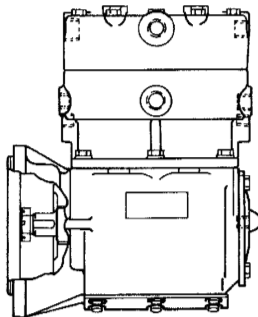
PC. NO. 102151



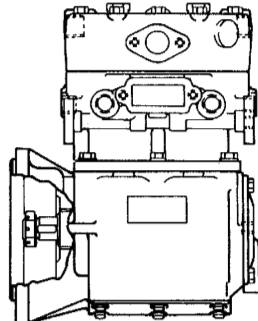
PC. NO. 102835



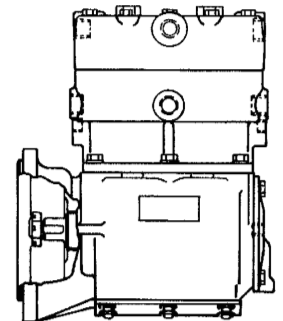
PC. NO. 106268



PC. NO. 289789



PC. NO. 289925  
PC. NO. 106791 —  
STEEL CONNECTING ROD

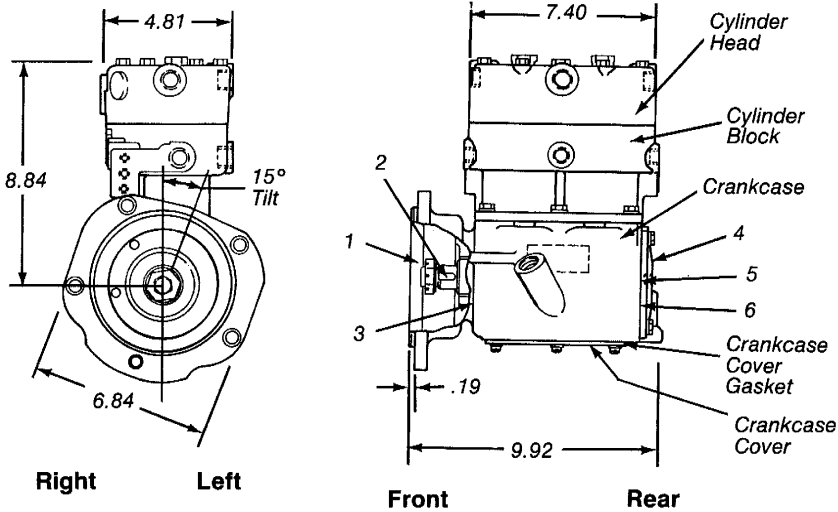


PC. NO. 289941  
PC. NO. 106792 —  
STEEL CONNECTING ROD

## RX CHANGEOVER

RMFR. EXCH. PC. NOS.	CHANGEOVER TO/FROM				COMPRESSOR APPLICATION
	TF-400	TF-500	TF-501	TF-600	
289941	101143	276962	286539	280891	
289925	289444	276961	286538	280609	
289789	—	281128	286541	284411	
106268	—	—	—	—	Series 60 DDAD
102835	289444	276961	286538	280609	
101282	—	282928	286579	284121	
102151	101143	276962	286539	280891	
106791	—	—	—	—	GMT BUS
106792	—	—	—	—	

**PARTS LIST/GENERAL INFORMATION**



KEY NO.	QTY.	DESCRIPTION	PC. NO.
1	1	Crankshaft	292623
2	1	Crankshaft Key	202927
3	1	Thrust Washer	246439
4	1	End Cover	281036
5	1	Thrust Washer	240576
6	1	O-Ring	239189

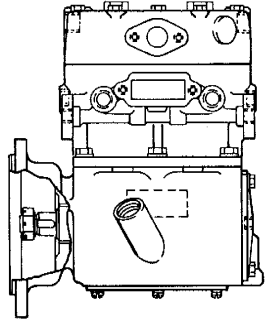
**ORIGINAL EQUIPMENT  
REMANUFACTURED EXCHANGE**

**ORIGINAL EQUIPMENT**

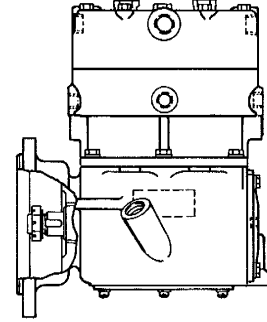
O.E. COMPRESSOR PC. NO.	RMFR. EXCHANGE PC. NO.	CUSTOMER IDENTIFICATION	COMMENTS
102136	289344	—	
102286	289344	—	
289330	289344	—	
—	102137	—	Reman. Only

**REMANUFACTURED EXCHANGE**

RMFR. EXCHANGE PC. NO.	AIR INLET LOCATION	AIR DISCHARGE LOCATION	CRANK-SHAFT NUT	CRANK-CASE	CRANKCASE COVER	CRANKCASE COVER GASKET	CYLINDER HEAD COMPLETE	CYLINDER BLOCK COMPLETE
102137	Left	Left & Top	202926	289463	245400	292370	289161	289163
289344	Right	Right & Top	202926	289463	245400	292370	289161	289163



PC. NO. 102137

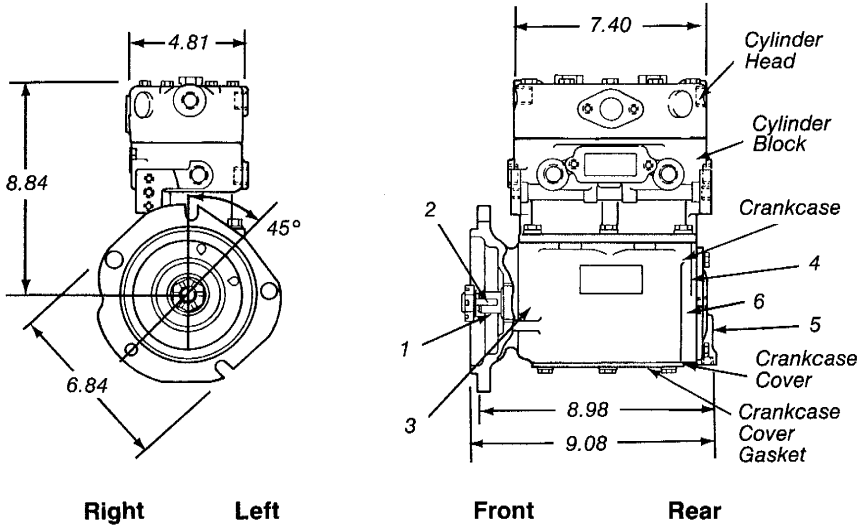


PC. NO. 289344

## RX CHANGEOVER

RMFR. EXCH. PC. NOS.	CHANGEOVER TO/FROM				COMPRESSOR APPLICATION
	TF-400	TF-500	TF-501	TF-600	
102137	—	—	—	281008	
289344	—	279009	—	287105	

**PARTS LIST/GENERAL INFORMATION**



KEY NO.	QTY.	DESCRIPTION	PC. NO.
1	1	Crankshaft	292623
2	1	Crankshaft Key	202927
3	1	Thrust Washer	246439
4	1	O-Ring	239189
5	1	End Cover	276127
6	1	Thrust Washer	240576

**ORIGINAL EQUIPMENT  
REMANUFACTURED EXCHANGE**

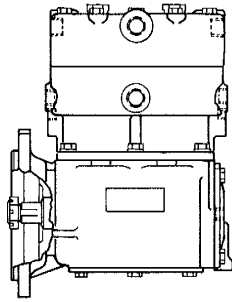
**ORIGINAL EQUIPMENT**

O.E. COMPRESSOR PC. NO.	RMFR. EXCHANGE PC. NO.	CUSTOMER IDENTIFICATION
101139	101158	—
101387	289342	—
101418	101158	Ford D9HS-2875-AA
101646	101158	—
101966	101158	Ford EOHS-2875-CA
101972	101158	—
102037	101158	Navistar 540515-C91
102040	101158	—
102153	101158	Ford EOHS-2875-DA
102154	101158	—

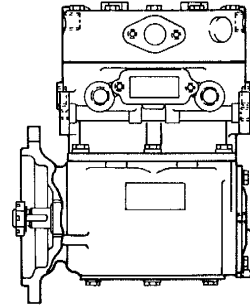
O.E. COMPRESSOR PC. NO.	RMFR. EXCHANGE PC. NO.	CUSTOMER IDENTIFICATION
102540	101158	—
102543	101158	—
102784	289342	—
102964	101158	Navistar 540515-93
104356	289342	—
289276	289342	—
289318	289342	—
289327	289342	—
289331	289342	—

**REMANUFACTURED EXCHANGE**

RMFR. EXCHANGE PC. NO.	AIR INLET LOCATION	AIR DISCHARGE LOCATION	CRANK-SHAFT NUT	CRANK-CASE	CRANKCASE COVER	CRANKCASE COVER GASKET	CYLINDER HEAD COMPLETE	CYLINDER BLOCK COMPLETE
289342	Left	Left & Top	245212	289464	245403	297544	289161	289163
101158	Right	Right & Top	245212	289464	245403	297544	289161	289163



PC. NO. 101158



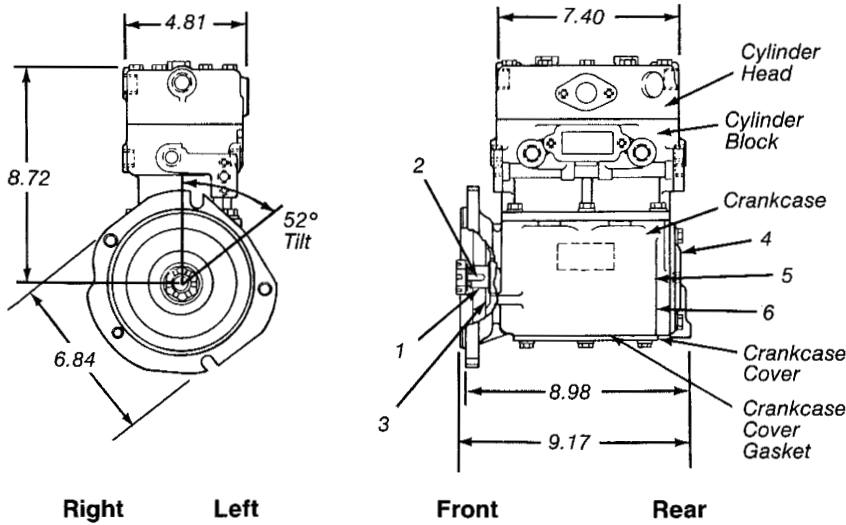
PC. NO. 289342

## RX CHANGEOVER

RMFR. EXCH. PC. NOS.	CHANGEOVER TO/FROM				COMPRESSOR APPLICATION
	TF-400	TF-500	TF-501	TF-600	
101158	—	285252	286543	—	
289342	—	281042	286542	282013	

**PARTS LIST/GENERAL INFORMATION**

KEY NO.	QTY.	DESCRIPTION	PC. NO.
1	1	Crankshaft	292623
2	1	Crankshaft Key	202927
3	1	Thrust Washer	246439
4	1	Rear End Cover	276127
5	1	Thrust Washer	240576
6	1	O-Ring	239189



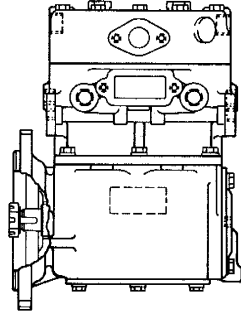
**ORIGINAL EQUIPMENT  
REMANUFACTURED EXCHANGE**

**ORIGINAL EQUIPMENT**

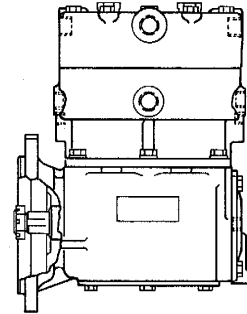
O.E. COMPRESSOR PC. NO.	RMFR. EXCHANGE PC. NO.	CUSTOMER IDENTIFICATION
101545	101554	—
101651	101636	—
101635	101636	—

**REMANUFACTURED EXCHANGE**

RMFR. EXCHANGE PC. NO.	AIR INLET LOCATION	AIR DISCHARGE LOCATION	CRANK-SHAFT NUT	CRANK-CASE	CRANKCASE BASE	CRANKCASE COVER GASKET	CYLINDER HEAD COMPLETE	CYLINDER BLOCK COMPLETE
101554	Left	Left & Top	245212	285968	245403	297544	289161	289163
101636	Right	Right & Top	245212	285968	245403	297544	289161	289163



PC. NO. 101554



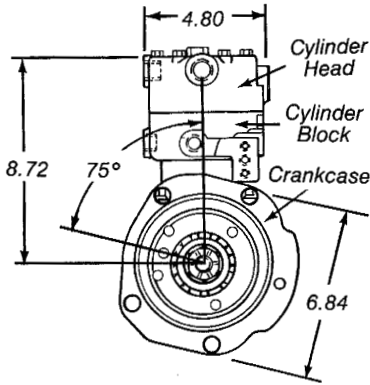
PC. NO. 101636

## RX CHANGEOVER

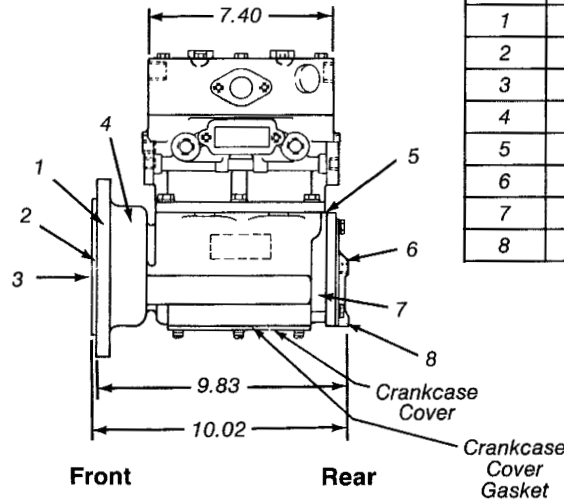
RMFR. EXCH. PC. NOS.	CHANGEOVER TO/FROM				COMPRESSOR APPLICATION
	TF-400	TF-500	TF-501	TF-600	
101554	—	285898	—	—	
101636	—	—	—	—	6V92, 8V92

**PARTS LIST/GENERAL INFORMATION**

KEY NO.	QTY.	DESCRIPTION	PC. NO.
1	1	Crankshaft	292640
2	1	Crankshaft Key	231427
3	1	Crankshaft Nut	202926
4	1	Ball Bearing	236120
5	1	End Cover Gasket	235425
6	1	Ball Bearing	235440
7	1	O-Ring	203028
8	1	Rear End Cover	231265



**Right Left**



**Front Rear**

**ORIGINAL EQUIPMENT  
REMANUFACTURED EXCHANGE**

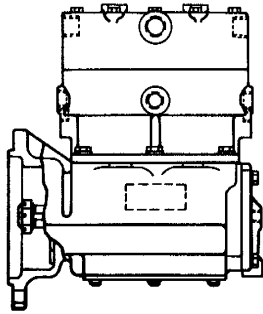
**ORIGINAL EQUIPMENT**

O.E. COMPRESSOR PC. NO.	RMFR. EXCHANGE PC. NO.	CUSTOMER IDENTIFICATION	COMMENTS
289263	289915	—	
289264	289790	—	
289282	106793	—	Steel Conn. Rods
289868	289964	—	

**REMANUFACTURED EXCHANGE**

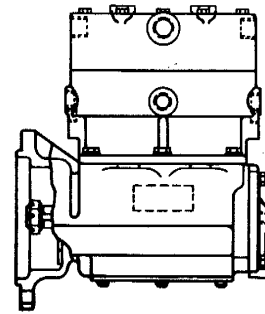
RMFR. EXCHANGE PC. NO.	AIR INLET LOCATION	AIR DISCHARGE LOCATION	CRANK-CASE	CRANKCASE COVER	CRANKCASE COVER GASKET	CYLINDER HEAD COMPLETE	CYLINDER BLOCK COMPLETE
289915	Right	Top	240375	214789	297544	289762	289163
289790	Left	Left & Top	240375	214789	297544	289161	289163
289964	Right	Right & Top	240375	214789	297544	289161	289163
106793	Right	Top	240375	214789	297544	289762	289163

### TOP DISCHARGE

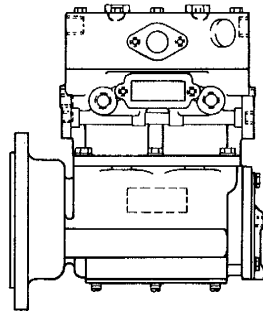


PC. NO. 289915

PC. NO. 106793 —  
STEEL CONNECTING ROD



PC. NO. 289964



PC. NO. 289790

## RX CHANGEOVER

RMFR. EXCH. PC. NOS.	CHANGEOVER TO/FROM				COMPRESSOR APPLICATION
	TF-400	TF-500	TF-501	TF-600	
106793	—	—	—	—	
289915	—	278445	—	280369	
289790	—	275231	—	280422	
289964	—	278445	—	280369	