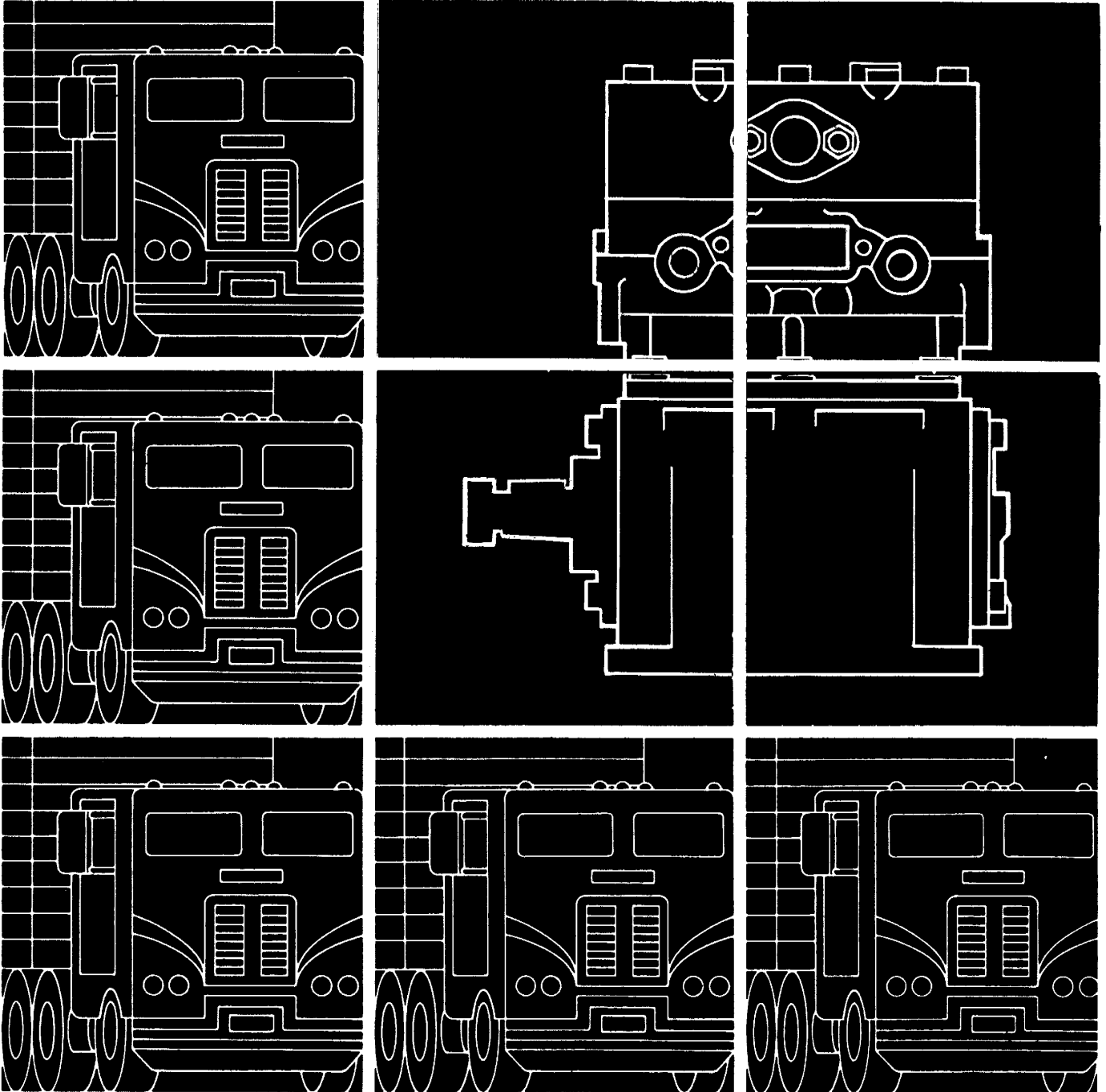


# Tu-Flo 600 Compressor

Service Parts  
Remanufactured Exchange  
Catalog 01-F-1

REVISED 10/78



**Bendix™**

The Tu-Flo 600 Compressor is an engine driven, two cylinder, reciprocating compressor with a displacement of 14½ cu. ft. per min. at 1250 RPM.

It is available in an engine lubricated configuration and employs a water cooled cylinder head and block, also with water cooled head-air cooled block. It is available in belt drive, direct drive single flange and direct drive double flange mount configurations.

OPERATING LIMITATIONS: Maximum crankshaft speed - 3000 RPM  
Maximum discharge temperature - 400°F.

For installation and maintenance information, see SD-01-4 Maintenance Pamphlet.

**EXCHANGE AND CHANGEVER INFORMATION**

Tu-Flo 600 Compressors are available either as an original equipment piece number or a remanufactured/exchange number.

Two reference schedules are listed for every piece number: one list combines both the O.E.M. number and the exchange number with accompanying major part details and other pertinent information. The second schedule lists all O.E.M., standard exchange and changeover piece numbers in addition to optional numbers which can be used in the event the standard exchange compressor is not readily available.

NOTE: Detail Parts for Exchange Compressors (i.e. Crankcases, Crankshafts, Blocks, etc. are not available as service parts) Exchange Compressors are not equipped with external parts or fittings.

**FIELD MAINTENANCE KITS & SERVICE PARTS LISTING**

DESCRIPTION	COMPR. TYPE	
	TU-FLO 600	MACK TU-FLO 600
FIELD MAINTENANCE KIT	280985	280985
UNLOADER KIT	279615	279615
GASKET SET	NONE	NONE
PISTON RING SET (STD.)	282525-5	282525-5
PISTON RING SET (.010 O.S.)	282526-5	282526-5
PISTON RING SET (.020 O.S.)	282527-5	282527-5
PISTON RING SET (.030 O.S.)	282528-5	282528-5
PISTON & WRIST PIN KIT (STD.)	289891	289891
PISTON & WRIST PIN KIT (.010 O.S.)	289892	289892
PISTON & WRIST PIN KIT (.020 O.S.)	289893	289893
PISTON & WRIST PIN KIT (.030 O.S.)	289894	289894
ALUMINUM CONN. RODS WITHOUT INSERTS	229085	229085
ALUMINUM CONN. ROD WITH STD. INSERTS	229084	279810
STEEL CONN. ROD WITHOUT INSERTS	283850	283850
STEEL CONN. RODS WITH STANDARD INSERTS	283849	284431
CONN. ROD INSERT KITS (STD.)	282767	287062* 1-238596 1-240951
EACH KIT CONTAINS	2-238596	
CONN. ROD INSERT KITS (.010 U.S.)	282768	287063* 1-239333 1-244534
EACH KIT CONTAINS	2-239333	
CONN. ROD INSERT KITS (.020 U.S.)	282769	287064* 1-239334 1-244535
EACH KIT CONTAINS	2-239334	
CONN. ROD INSERT KITS (.030 U.S.)	282770	287065* 1-239335 1-244536
EACH KIT CONTAINS	2-239335	

**UNLOADER MAINTENANCE KIT PC. NO. 279615  
CONSISTS OF THE FOLLOWING:**

QUAN.	PC. NO.	DESCRIPTION
2	229875	UNLOADER PISTON COMPLETE (PRE-LUBRICATED)
2	240023	UNLOADER PLUNGER
2	240023	PLUNGER GUIDE
1	240024	UNLOADER SPRING SADDLE
1	238491	UNLOADER SPRING SEAT
1	239972	UNLOADER SPRING
1	243430	STRAINER GASKET

**MAINTENANCE KIT PC. NO. 280895  
CONSISTS OF THE FOLLOWING:**

QUAN.	PC. NO.	DESCRIPTION
1	279615	UNLOADER KIT
2	239395	INLET VALVE GUIDE
2	236125	INLET VALVE
2	236126	INLET VALVE SPRING
1	244364	CYLINDER HEAD GASKET (WATER COOLED)
2	230935	DISCHARGE VALVE
2	210468	DISCHARGE VALVE SPRING
1	204820	DISCHARGE FITTING GASKET
1	239292	FILTER ELEMENT
1	236577	GOVERNOR GASKET

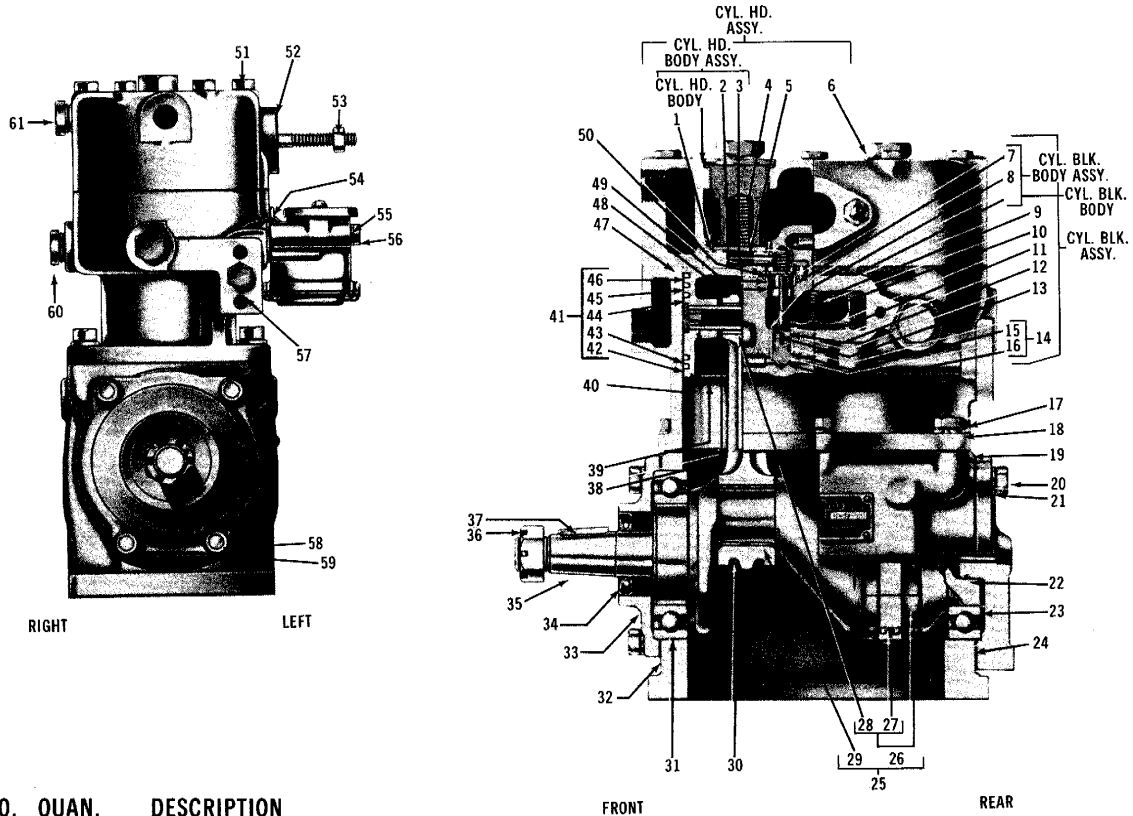
NOTE: INSERT KITS ARE PACKAGED 10 PER CARTON. ORDER IN LOTS OF 10 TO FACILITATE HANDLING.

A —THREE RING ALUM. PISTON (NOTE: THREE & FIVE RING CAST IRON PISTON NO LONGER AVAILABLE) INCLUDES TWO (2) TRU-ACR LOCK RING.

5 —FIVE RING CAST IRON PISTON.

\* —NEEDED ONLY WHEN POWER STEERING PUMP IS MOUNTED ON REAR OF COMPRESSOR.

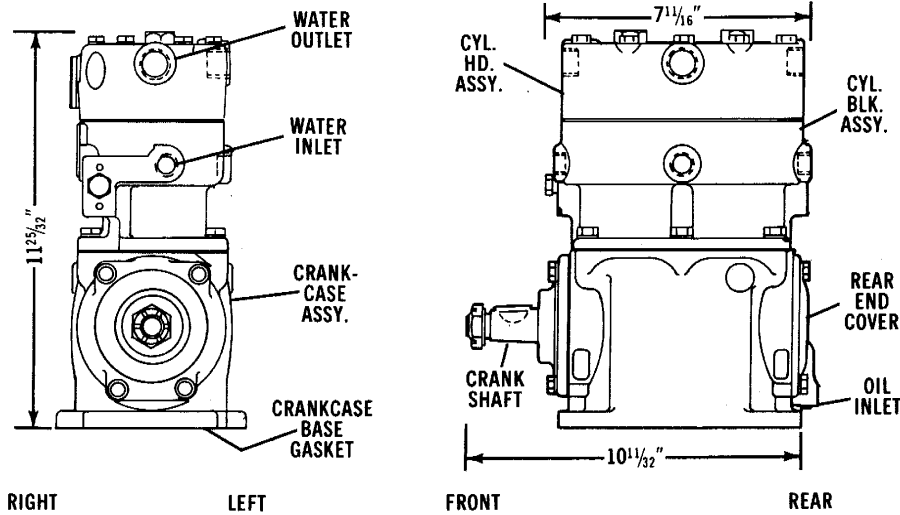
THE PARTS LISTED BELOW ARE STANDARD ON TU-FLO 600 COMPRESSORS  
 REFER TO SECTIONS 1 THRU 14 FOR FURTHER SPECIFIC DETAIL PARTS ON CYLINDER HEADS, CYLINDER BLOCKS, CRANKCASE  
 ASSEMBLIES, CRANKSHAFTS, END COVERS, ETC.



NO.	PC. NO.	QUAN.	DESCRIPTION	NO.	PC. NO.	QUAN.	DESCRIPTION
SEE SCHEDULE		1	<b>CYLINDER HEAD ASSY.</b>				
SEE SCHEDULE		1	CYLINDER HEAD BODY ASSY.				
1	237291	2	DISCHARGE VALVE SEAT	30	238597	4	LOCK WASHER
SEE SCHEDULE		1	CYLINDER HEAD BODY	31	235440	1	BALL BEARING
2	240143	2	INLET VALVE SPRING INSERT	32	235425	1	FRONT END COVER GASKET
3	240142	2	INLET VALVE SPRING SEAT	33	230920	1	FRONT END COVER
4	210468	2	DISCHARGE VALVE SPRING	34	243053	1	OIL SEAL
5	230935	2	DISCHARGE VALVE	35	244461	1	CRANKSHAFT
6	236215	2	DISCHARGE VALVE CAP NUT	36	202926	1	NUT
SEE SCHEDULE		1	<b>CYLINDER BLOCK ASSY.</b>	37	211347	1	KEY
SEE SCHEDULE		1	CYLINDER BLOCK BODY	38	292530	2	WRIST PIN
7	236118	2	INLET VALVE SEAT	39	292529	2	PISTON
8	238586	2	BUSHING	40	292392	4	WRIST PIN BUTTON
SEE SCHEDULE		1	CYLINDER BLOCK BODY				
9	238491	1	UNLOADER SPRING SEAT	41	282525	1	<b>PISTON RING SET</b>
10	239972	1	UNLOADER SPRING	42	246597	2	WIDE PISTON RING
11	240024	1	UNLOADER SPRING SADDLE	43	241571	2	NARROW PISTON RING
12	240022	2	UNLOADER PLUNGER GUIDE	44	246597	2	WIDE PISTON RING
13	240023	2	UNLOADER PLUNGER	45	241571	2	NARROW PISTON RING
14	229875	2	UNLOADER PISTON	46	241571	2	NARROW PISTON RING
15	238144	2	BACK-UP RING				
16	238143	2	GROMMET	47	244364	1	CYLINDER HEAD GASKET
16	240018	2	UNLOADER PISTON	48	239395	2	INLET VALVE GUIDE
17	210879	6	CAP SCREW	49	236125	2	INLET VALVE
18	237686	6	LOCK WASHER	50	236126	2	INLET VALVE SPRING
19	241560	1	CYLINDER BLOCK GASKET	51	237696	10	CAP SCREW
20	237315	4	CAP SCREW	52	204820	1	DISCHARGE FITTING GASKET
21	237648	4	LOCK WASHER	53	203145	2	NUT
22	203028	1	OIL SEAL RING	54	236170	1	STRAINER GASKET
23	235440	1	BALL BEARING	55	237648	2	LOCK WASHER
24	235417	1	REAR END COVER GASKET	56	210106	2	CAP SCREW
25	228188	2	<b>CONNECTING ROD COMPLETE</b>	57	230111	1	PIPE PLUG 1/4
26	228189	2	CONN. ROD & CAP ASSY.	58	237315	4	CAP SCREW
27	238598	4	BOLT	59	237648	4	LOCK WASHER
28	239544	2	WRIST PIN BUSHING	60	238807	4	PIPE PLUG 3/8
29	238596	4	BEARING INSERT	61	238822	2	PIPE PLUG 1/2

TU-FLO 600 COMPRESSORS

VERTICAL MOUNT — ENGINE LUBRICATED



REMFR. EXCH. AND CHANGEVER SELECTIONS

TF-600 COMPR. PC. NO.	STD. REMFR. EXCH.	OPTIONS	CHANGEVER TO/FROM		
			TF-500 EQUIV.	TF-501 EQUIV.	TF-700 EQUIV.
279892	280613	280605, 280748, 280797, 280958 281701, 281828, 284409	279285	286528	—
280220	280604	280648, 280679, 284258	277249	286527	—
280221	280603	280445, 280647, 285512, 286745	276148 277693	286529	—
280237	280602	282460, 282498, 282578, 284133	277057	286526	—
280445	280603	280221, 280647, 285512, 286475	277675	286529	—
280469	280603	280221, 280445, 280647, 285512	279311	286529	—
280538	280540	281743, 282154, 282289	277694	—	—
280540	280540	280538, 281743, 282154, 282289	277694	—	289865
280549	280551	—	279005	—	—
280551	280551	280549	279005	—	—
280600	280600	—	226535	—	—
280602	280602	280237, 282460, 282498, 284133	227320	286526	—
280603	280603	280221, 280445, 280647, 285512	227321	286529	—
280604	280604	280220, 280648, 280679, 284258	227322	286527	—
280605	280613	281828, 280797, 280852, 284409	227323	286528	—
280606	280606	280613	227324	—	—
280610	280610	283973, 283974, 286510	227321	—	—
280611	280611	280643, 280748, 280958, 281701	227332	286535	—
280612	280612	—	228139	—	—
280613	280613	280797, 280852, 281828, 244409	228140	286528	—
280623	280623	280643	229032	286535	—
280630	280630	280603	229058	286521	—
280631	280631	—	—	—	—
280643	280611	280748, 280958, 281701, 283971	229032	286535	—
280647	280603	280221, 280445, 285512, 286745	277334	286529	—
280648	280604	280220, 280679, 284258	277058	286527	—
280679	280604	280220, 280648, 284258	227322	286527	—
280748	280611	280643, 280958, 281701, 283971	277624	286683	289847
280797	280613	280605, 280748, 280958, 281701	229440	286528	—
280852	280613	280605, 280748, 280958, 281701	277025	286528	289238
280958	280611	280643, 280748, 281701, 283971	278790	286535	—
281513	280602	280237, 282460, 282498, 284133	227320	—	—
281701	280611	280643, 280748, 280958, 283971	227332	286535	—

TF-600 COMPR. PC. NO.	STD. REMFR. EXCH.	OPTIONS	CHANGEVER TO/FROM		
			TF-500 EQUIV.	TF-501 EQUIV.	TF-700 EQUIV.
281743	280540	280538, 282154, 282289	279381	—	—
281828	280613	280605, 280797, 280852, 284409	279367	286528	—
282154	280540	280538, 281743, 282289	—	—	—
282274	282274	282275	—	—	—
282275	282274	—	—	—	—
282289	280540	280538, 281743, 282154	—	—	—
282452	282452	—	—	—	—
282460	280602	280237, 282498, 282578, 284133	281169	—	289282
282468	280602	280237, 282498, 282578, 284133	229541	286526	—
282498	280602	280237, 282460, 282578, 284133	281222	286526	—
282577	280603	280221, 280445, 280647, 285512	281042	—	—
282578	280602	280237, 282460, 282498, 284133	227320	286526	—
282579	280602	280237, 282460, 282498, 284133	—	—	—
282580	280613	280605, 280797, 280852, 284409	—	—	—
282581	280602	280237, 282460, 282498, 284133	—	—	—
282971	280603	280221, 280445, 280647, 285512	—	—	—
283971	280611	280643, 280748, 280958, 281701	—	—	—
283973	280610	283974, 286510	227331	—	—
283974	280610	283973, 286510	227331	—	—
284133	280602	280237, 282460, 282498, 282578	227320	286526	—
284258	280604	280220, 280648, 280679	227322	286527	—
284378	280613	280605, 280797, 281828, 284409	281401	286528	—
284409	280613	280605, 280797, 280852, 281828	227323	286528	—
285471	280613	280605, 280797, 280852, 281828	227323	286528	—
285512	280603	280221, 280445, 280647, 286475	—	—	—
285940	280613	280605, 280797, 281828, 284409	227323	286528	—
286475	280623	280221, 280445, 280647, 285512	—	—	—
286479	280613	280797, 280852, 281828, 284409	—	—	—
286510	280610	283973, 283974	283388	—	—
286836	286836	—	—	—	289867

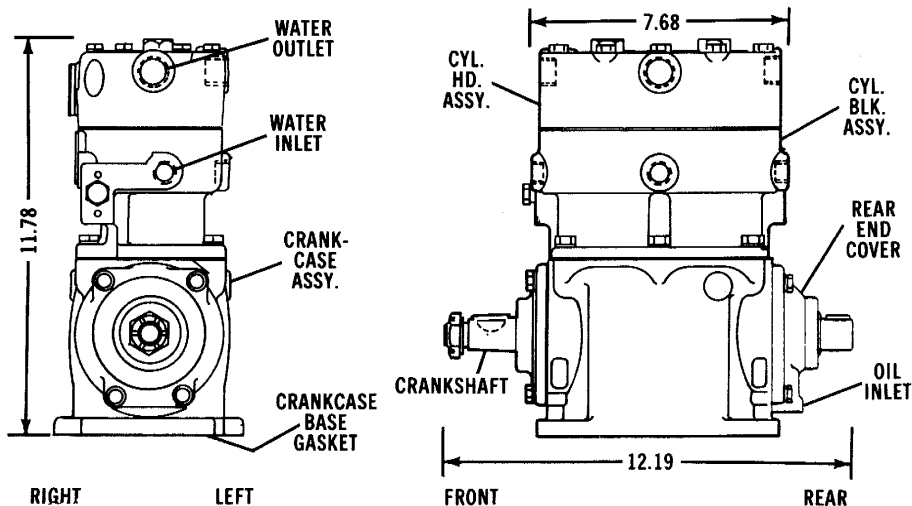
CYL. HD. ASSY.	CYL. HD. BODY ASSY.	CYL. HD. BODY
226098	226315	236213
227453	227454	237695
278585	227454	237695
283615	283618	247845
283641	283638	247848

CYL. BLK. ASSY.	CYL. BLK. BODY ASSY.	CYL. BLK. BODY
279663	279664	244362
280430	280431	245005

## VERTICAL MOUNT — ENGINE LUBRICATED

TF-600 COMPR. PC. NO.	CYL. HEAD ASSY.	CYL. BLOCK ASSY.	CRANK- CASE ASSY.	CRANK- CASE BODY	CRANK- SHAFT	REAR END COVER	AIR STRAINER	GOV.	STUD OR CAP SCREW	CRANK- CASE BASE GASKET	AIR INLET LOCATION	AIR DISCH. LOCATION	GOV. PORT LOCATION	WATER PORTS				OIL INLET LOCATION	BEARING TYPE		CONN. ROD MATL.	
														INLET	SIZE	OUTLET	SIZE		FRONT	REAR		
A279892	283615	279663	—	237395	240182	236578	NONE	278846	230672	NONE	LEFT	LEFT	LFT FRT	BLK RR	3/8	HD FRT	1/2	CT-RR	BALL	BALL	ALUM	
B280220	283615	279663	227752	237394	244461	276363	NONE	276103	NONE	211376	RIGHT	RIGHT	RT RR	BLK RT	3/8	HD FRT	1/2	IN CR CASE	BALL	SLEEVE	ALUM	
280221	283615	279663	—	237120	244461	275577	NONE	NONE	NONE	211376	RIGHT	RIGHT	RT FRT	BLK RR	3/8	HD FRT	1/2	CT-RR	BALL	SLEEVE	ALUM	
280237	283615	279663	227751	237393	244461	276363	NONE	NONE	230672	211376	LEFT	LEFT	LFT RR	BLK RR	3/8	HD FRT	1/2	IN CR CASE	BALL	SLEEVE	ALUM	
280445	283615	279663	—	237395	244461	275969	226469	276103	230672	211376	RIGHT	RIGHT	RT RR	BLK FRT	3/8	HD RR	1/2	CT RR	BALL	SLEEVE	ALUM	
280469	283615	279663	—	237395	244461	275969	NONE	NONE	230672	211376	LEFT	LEFT	RT RR	BLK RR	3/8	HD FRT	1/2	CT RR	BALL	SLEEVE	ALUM	
280538	278585	279663	227752	237394	244461	276363	NONE	NONE	211376	LEFT	LEFT	LFT FRT	BLK FRT	3/8	HD RR	1/2	CT RR	RR	BALL	SLEEVE	ALUM	
280540	283615	279663	—	237120	244461	275577	NONE	NONE	NONE	211376	LEFT	TOP	LFT FRT	BLK FRT	3/8	HD RR	1/2	CT RR	BALL	SLEEVE	ALUM	
280549	278585	279663	227752	237394	244461	276363	NONE	NONE	NONE	211376	RIGHT	RIGHT	RT FRT	BLK RR	3/8	HD FRT	1/2	RT FRT	BALL	SLEEVE	ALUM	
280551	227453	279663	—	237120	244461	275577	NONE	NONE	NONE	211376	RIGHT	TOP	RT FRT	BLK RR	3/8	HD LFT	1/2	CT RR	BALL	SLEEVE	ALUM	
280602*	—	—	—	—	—	—	—	—	—	—	LEFT	LEFT	FRT & RR	BLK ALL OPEN	—	HD ALL OPEN	—	ALL OPEN	—	—	—	
280603*	—	—	—	—	—	—	—	—	—	—	RIGHT	RIGHT	FRT & RR	BLK ALL OPEN	—	HD ALL OPEN	—	ALL OPEN	—	—	—	
280604*	—	—	—	—	—	—	—	—	—	—	RIGHT	RIGHT	FRT & RR	BLK ALL OPEN	—	HD ALL OPEN	—	ALL OPEN	—	—	—	
280605*	—	—	—	—	—	—	—	—	—	—	LEFT	LEFT	FRT & RR	BLK ALL OPEN	—	HD ALL OPEN	—	ALL OPEN	—	—	—	
280606*	—	—	—	—	—	—	—	—	—	—	LEFT	LEFT	FRT & RR	BLK ALL OPEN	—	HD ALL OPEN	—	ALL OPEN	—	—	—	
280610*	—	—	—	—	—	—	—	—	—	—	LEFT	LEFT	FRT & RR	BLK ALL OPEN	—	HD ALL OPEN	—	ALL OPEN	—	—	—	
280611*	—	—	—	—	—	—	—	—	—	—	RIGHT	RIGHT	FRT & RR	BLK ALL OPEN	—	HD ALL OPEN	—	ALL OPEN	—	—	—	
280612*	—	—	—	—	—	—	—	—	—	—	LEFT	LEFT	FRT & RR	BLK ALL OPEN	—	HD ALL OPEN	—	ALL OPEN	—	—	—	
280613*	—	—	—	—	—	—	—	—	—	—	LEFT	LEFT	FRT & RR	BLK ALL OPEN	—	HD ALL OPEN	—	ALL OPEN	—	—	—	
280623*	—	—	—	—	—	—	—	—	—	—	RIGHT	RIGHT	FRT & RR	BLK ALL OPEN	—	HD ALL OPEN	—	ALL OPEN	—	—	—	
280630*	—	—	—	—	—	—	—	—	—	—	RIGHT	RIGHT	FRT & RR	BLK ALL OPEN	—	HD ALL OPEN	—	ALL OPEN	—	—	—	
280643	283615	279663	227762	235905	244461	276363	NONE	NONE	235552	235907	RIGHT	RIGHT	FRT & RR	BLK ALL OPEN	3/8	HD FRT & RR	1/2	CT RR & CC	BALL	SLEEVE	ALUM	
B280647	283615	279663	—	237395	244461	275969	279900	276101	230672	211376	LEFT	LEFT	RT RR	BLK FRT	3/8	HD RR	1/2	CT RR	RR	BALL	SLEEVE	ALUM
280648	283615	279663	227752	237394	244461	276363	NONE	NONE	230672	211376	RIGHT	RIGHT	RT RR	BLK LFT & RR	3/8	HD FRT	1/2	CT RR & CC	BALL	SLEEVE	ALUM	
BCD280679	283615	279663	227752	237394	244461	276363	NONE	276104	233798	211376	LEFT	LEFT	RT RR	BLK RT	3/8	HD FRT	1/2	IN CC	BALL	SLEEVE	ALUM	
280748	283615	279663	227762	235905	244461	276363	NONE	NONE	NONE	NONE	RIGHT	RIGHT	RT RR	BLK FRT & RT RR	3/8	HD RT FRT & RR	1/2	IN CC	BALL	SLEEVE	ALUM	
280797	283615	279663	—	237395	244461	275969	NONE	NONE	235464	NONE	LEFT	LEFT	FT FRT & RR	BLK FRT	3/8	HD RT & RR	1/2	CT RR	BALL	SLEEVE	ALUM	
280852	283615	279663	—	237395	244461	276114	NONE	NONE	233798	211376	LEFT	LEFT	LFT RR	BLK RR	3/8	HD RR	1/2	CT RR	BALL	SLEEVE	ALUM	
280958	283615	279663	227762	235905	244461	276363	NONE	NONE	235464	235907	RIGHT	RIGHT	RT RR	BLK RR	3/8	HD RR	1/2	CT RR	BALL	SLEEVE	ALUM	
BE281513	226098	279663	227752	237394	244461	276363	NONE	276336	230672	211376	LEFT	LEFT	LFT RR	BLK 3 PORTS	3/8	HD FRT	1/2	ALL OPEN	BALL	SLEEVE	ALUM	
F281701	283615	279663	227762	235905	244461	276363	NONE	NONE	230672	NONE	RIGHT	RIGHT	RT RR	BLK RR	3/8	HD RR	1/2	CT RR	BALL	SLEEVE	ALUM	
281743	283641	279663	—	237395	244461	275969	279900	NONE	NONE	211376	LEFT	TOP	LFT RR	BLK RR	3/8	HD RR	1/2	CT RR	RR	BALL	SLEEVE	ALUM
B281828	283615	279663	—	237395	244461	275969	279900	276101	NONE	213943	LEFT	LEFT	LFT RR	BLK RT	3/8	HD FRT & RT	1/2	CT RR	BALL	SLEEVE	ALUM	
BG282154	283641	279663	—	237395	244461	275969	NONE	276558	NONE	NONE	LEFT	TOP	LFT RR	BLK FRT	3/8	HD RR	1/2	CT RR	BALL	SLEEVE	ALUM	
282274	283641	279663	—	238454	244461	275969	NONE	NONE	NONE	235907	RIGHT	TOP	RT FRT & RR	BLK ALL OPEN	3/8	HD RR	1/2	CT RR	BALL	SLEEVE	ALUM	
282275	283641	279663	—	238454	244461	275969	NONE	NONE	NONE	235907	RIGHT	TOP	RT FRT & RR	BLK ALL OPEN	3/8	HD RR	1/2	CT RR	BALL	SLEEVE	ALUM	
BG282289	283641	279663	—	237395	244461	275969	NONE	282343	NONE	211376	LEFT	TOP	LFT RR	BLK FRT	3/8	HD RR	1/2	CT RR	RR	BALL	SLEEVE	ALUM
B282452	283615	280430	—	246074	240182	236578	226469	276100	235464	238431	LEFT	LEFT	LFT RR	BLK RT & RR	3/8	HD FRT	1/2	CT RR	BALL	SLEEVE	ALUM	
H1282460	283615	279663	227752	237394	244461	276363	NONE	NONE	233798	211376	LEFT	LEFT	LFT FRT & RR	BLK ALL OPEN	3/8	HD FRT, RT & RR	1/2	IN CC	BALL	SLEEVE	ALUM	
282468	283615	279663	227751	237393	240182	230918	226469	NONE	233798	211376	LEFT	LEFT	LFT RR	BLK RR	3/8	HD FRT	1/2	IN CC	BALL	SLEEVE	ALUM	
H1282498	283615	279663	227752	237394	244461	276363	NONE	NONE	233798	211376	LEFT	LEFT	LFT, FRT & RR	BLK ALL OPEN	3/8	HD FRT, RT & RR	1/2	IN CC	BALL	SLEEVE	ALUM	
B1282577	283615	279663	—	237395	244461	275969	NONE	276336	230672	211376	RIGHT	RIGHT	RT RR	BLK RR	3/8	HD FRT	1/2	CT RR	RR	BALL	SLEEVE	ALUM
282578	283615	279663	227752	237394	244461	276363	NONE	276103	235464	211376	LEFT	LEFT	LFT RR	BLK RR	3/8	HD RR	1/2	ALL OPEN	BALL	SLEEVE	ALUM	
F282579	283615	279663	—	237395	244461	276363	NONE	NONE	235464	211376	LEFT	LEFT	LFT FRT & RR	BLK RR	3/8	HD FRT	1/2	IN CC	BALL	SLEEVE	ALUM	
EK282580	283615	279663	—	237395	244461	275969	NONE	276380	230672	211376	LEFT	LEFT	LFT RR	BLK RR	3/8	HD FRT	1/2	CT RR	BALL	SLEEVE	ALUM	
BK282581	283615	279663	227751	237393	244461	276363	NONE	276380	230672	211376	LEFT	LEFT	LFT RR	BLK RR	3/8	HD FRT	1/2	IN CC	BALL	SLEEVE	ALUM	
BL282971	283615	279663	—	237395	244461	275969	279900	276226	233798	211376	RIGHT	RIGHT	RT RR	BLK RR	3/8	HD FRT	1/2	CT RR	BALL	SLEEVE	ALUM	
M283971	283615	279663	227762	235905	244461	276363	NONE	NONE	235464	235907	RIGHT	RIGHT	RT RR	BLK RR	3/8	HD FRT	1/2	CT RR	RR	BALL	SLEEVE	ALUM
283973	283615	279663	227762	237394	244461	276363	NONE	NONE	235464	235907	LEFT	LEFT	LFT RR	BLK RR	3/8	HD RR	1/2	CT RR & CC	BALL	SLEEVE	ALUM	
283974	283615	279663	227762	235905	244461	276363	NONE	NONE	235464	235907	LEFT	LEFT	LFT RR	BLK RR	3/8	HD RR	1/2	CT RR & CC	BALL	SLEEVE	ALUM	
284133	283615	284126	227751	237393	244461	276363	NONE	NONE	235464	245584	LEFT	LEFT	LFT RR	BLK LFT RR	3/8	HD FRT	1/2	IN CC	BALL	SLEEVE	ALUM	
B284258	283615	279663	227752	237394	244461	276363	279900	276103	NONE	211376	RIGHT	RIGHT	RT RR	BLK RT	3/8	HD FRT	1/2	IN CC	BALL	SLEEVE	ALUM	
B1284378	283615	279663	—	237395	244461	275577	226469	277192	233798	211376	LEFT	LEFT	LFT RR	BLK FRT	3/8	HD FRT	1/2	CT RR	BALL	SLEEVE	ALUM	
B1284409	283615	279663	—	237395	244461	275577	226469	277192	233798	NONE	LEFT	LEFT	LFT RR	BLK FRT	3/8	HD FRT	1/2	CT RR	BALL	SLEEVE	ALUM	
B1284571	283615	279663	—	237395	244461	275969	279900	276101	237315	213943	LEFT	LEFT	LFT RR	BLK FRT	3/8	HD FRT	1/2	CT RR	BALL	SLEEVE	ALUM	
B285512	283615	279663	—	237395	244461	276363	226469	276101	230672	211376	RIGHT	RIGHT	RT RR	BLK FRT	3/8	HD RR	1/2	CT RR	BALL	SLEEVE	STEEL	

VERTICAL MOUNT — ENG. LUBE — THRU DRIVE



TF-600 COMPR. PC. NO.	CYL. HEAD ASSY.	CYL. BLOCK ASSY.	CRANK- CASE ASSY.	CRANK- CASE BODY	CRANK- SHAFT	REAR END COVER	AIR STRAINER	GOV.	STUD OR CAP SCREW	CRANK- CASE BASE GASKET	AIR INLET LOCATION	AIR DISCH. LOCATION	GOV. PORT POSITION	WATER PORTS			
														INLET	SIZE	OUTLET	SIZE
A280680	283615	279663	227752	237394	234744	234752	NONE	276104	233798	211376	RIGHT	RIGHT	RT RR	BLK RT	3/8	HD FRT	1/2
280784	283641	279663	227822	238106	238097	236661	NONE	NONE	NONE	211376	LEFT	TOP	LFT RR	BLK RR	3/8	HD FRT	1/2
281713	283615	279663	227822	238106	238097	236661	226469	NONE	233798	211376	RIGHT	RIGHT	RT RR	BLK FRT	3/8	HD FRT	1/2
281751	283615	279663	227822	238106	238097	236661	NONE	NONE	230672	211376	LEFT	LEFT	LFT RR	BLK RR	3/8	HD FRT	1/2

A — ADD TWO (2) L.W. 237648, TWO (2) CAP SCREW 240910, ONE (1) GOV. GASKET 236577, ONE (1) DISCH. FITTING 213042, TWO (2) L.W. 237648, ONE (1) INLET ELBOW 237641, TWO (2) CAP SCREW 237315, ONE (1) GASKET 236170, ONE (1) STR. PLATE 238948.

OIL INLET LOCATION IS IN CRANKCASE BEARINGS FRONT & REAR ARE BALL CONN. ROD MATL IS ALUM.

CYL. HD. ASSY.	CYL. HD. BODY ASSY.	CYL. HD. BODY
283615	283618	247845
283641	283638	247848

CYL. BLK. ASSY.	CYL. BLK. BODY ASSY.	CYL. BLK. BODY
279663	279664	244362

EXCHANGE AND CHANGEOVER SELECTIONS

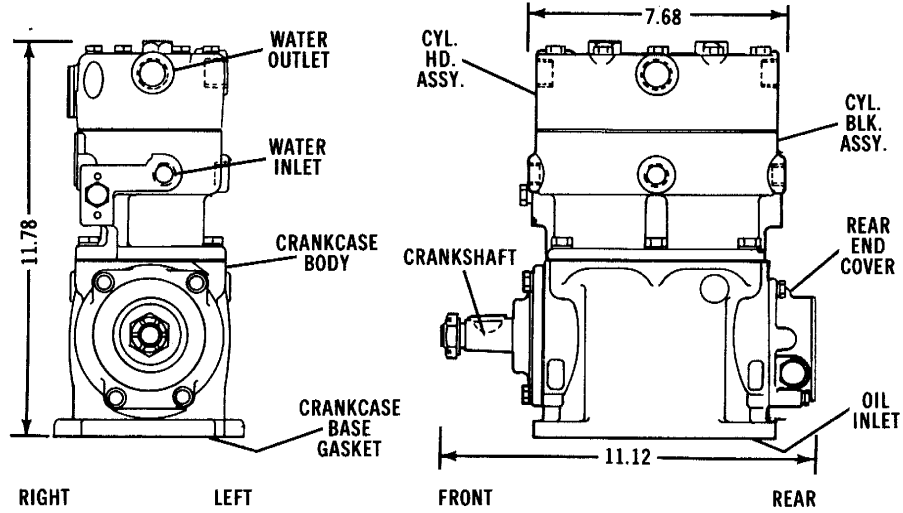
TF-600 COMPR. PC. NO.	STD. REMF. EXCH.	OPTIONS	CHANGEOVER TO/FROM		
			TF-500 EQUIV.	TF-501 EQUIV.	TF-700 EQUIV.
280680	280680	—	227322	286527	—
280784	280784	—	279384	—	—
281713	280713	—	275990	286531	—
281751	281751	—	228479	—	—

FOR FURTHER DETAILS  
SEE PG. 3

MAINTENANCE KITS  
SHOWN ON PG. 2

TU-FLO 600 COMPRESSORS

VERTICAL MOUNT — ENG. LUBE — TACHOMETER DRIVE



TF-600 COMPR. PC. NO.	CYLINDER HEAD ASSY.	CYLINDER BLOCK ASSY.	CRANK- CASE BODY	CRANK- CASE BASE GASKET	CRANK- SHAFT	REAR END COVER	STUD OR CAP SCREW	AIR INLET LOCATION	AIR DISCHARGE LOCATION	WATER PORTS			
										INLET	SIZE	OUTLET	SIZE
A281533	283615	279663	238454	235907	245462	280562	235464	RIGHT	RIGHT	BLK RR	3/8	HD RR	1/2
A283969	283615	279663	238454	235907	245462	280562	235464	RIGHT	RIGHT	BLK RR	3/8	HD RR	1/2
A283970	283615	279663	238454	235907	245462	280562	235464	RIGHT	RIGHT	BLK RR	3/8	HD RR	1/2

A —ADD ONE (1) SPACER 204773, ONE (1) HH CAP SCREW 242962

ADD THE FOLLOWING TACHOMETER ADAPTER ASSY. PARTS:

- 1 245463 TACHOMETER COVER
- 1 245087 GASKET
- 4 245464 FH MACH. SCREW
- 1 245085 OIL SEAL RING
- 1 244440 RETAINING RING
- 1 245461 HELIX DRIVE GEAR
- 1 281087 HELIX DRIVEN GEAR
- 4 239588 HH CAP SCREW
- 1 245091 CAP NUT
- 1 280561 SLEEVE ASSY.
- 1 214901 WOODRUFF KEY

GOVERNOR PORT POSITION IS RIGHT REAR.  
OIL INLET LOCATION IS BOTTOM REAR.  
BEARINGS ARE: FRONT-BALL, REAR-SLEEVE  
CONN. ROD MATL IS ALUM.

CYL. HD. ASSY.	CYL. HD. BODY ASSY.	CYL. HD. BODY
283615	283618	247845

CYL. BLK. ASSY.	CYL. BLK. BODY ASSY.	CYL. BLK. BODY
279663	279664	244362

EXCHANGE AND CHANGE OVER SELECTIONS

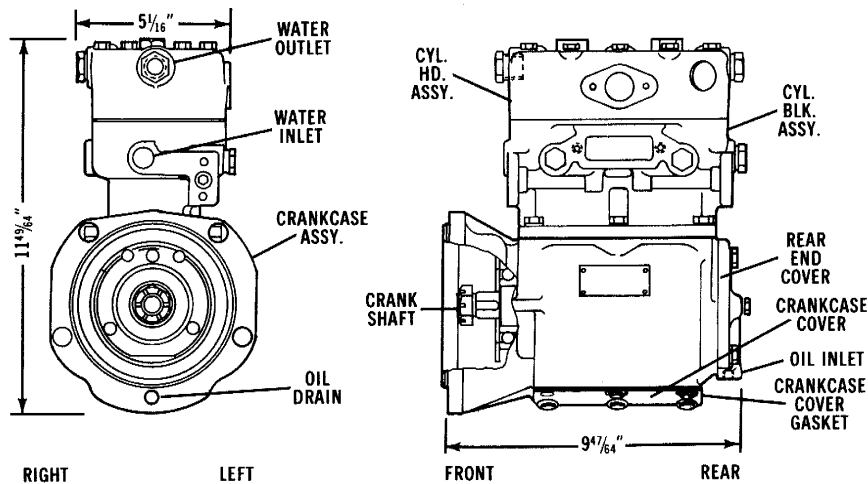
TF-600 COMPR. PC. NO.	STD. REMF. EXCH.	OPTIONS	CHANGE OVER TO/FROM		
			TF-500 EQUIV.	TF-501 EQUIV.	TF-700 EQUIV.
281533	281533	283969, 283970	281086	—	—
283969	281533	283970	—	—	—
283970	281533	283969	—	—	—

FOR FURTHER DETAILS  
SEE PG. 3

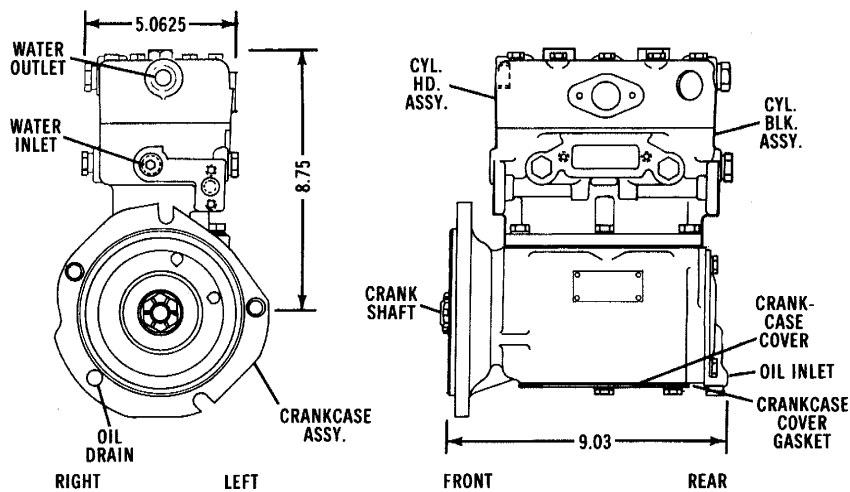
MAINTENANCE KITS  
SHOWN ON PG. 2

FLANGE MOUNT — WATER COOLED

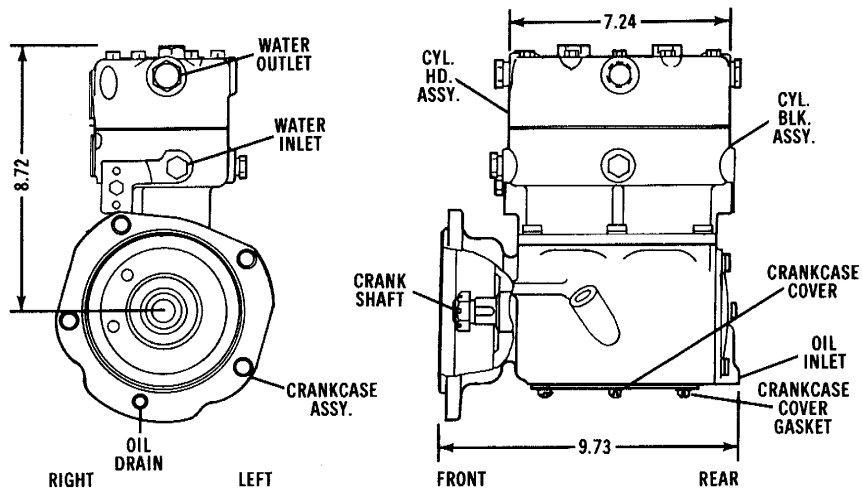
0° TILT



45° TILT



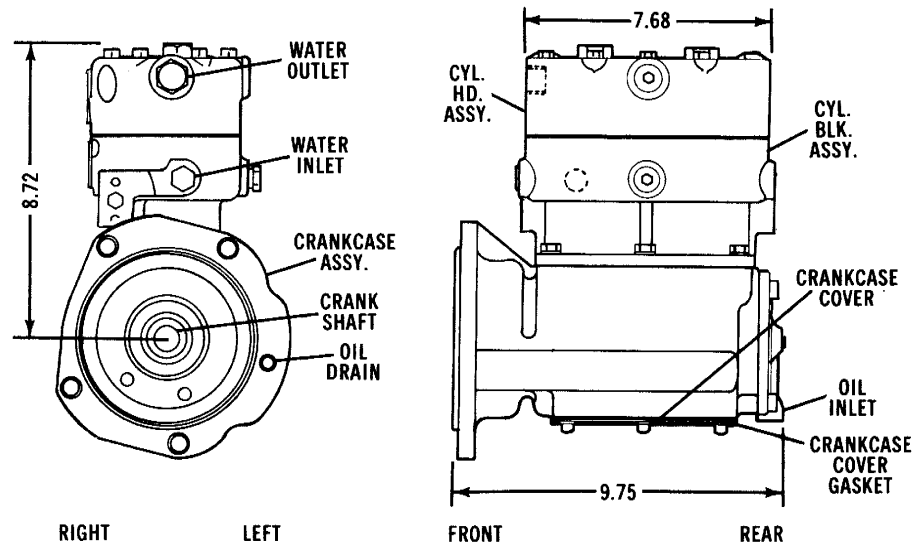
15° TILT



TU-FLO 600 COMPRESSORS

FLANGE MOUNT — WATER COOLED

75° TILT



REMRFR. EXCH. AND CHANGEOVER SELECTIONS

TF-600 COMPR. PC. NO.	STD. REMRFR. EXCH.	OPTIONS	CHANGEOVER TO/FROM			TF-600 COMPR. PC. NO.	STD. REMRFR. EXCH.	OPTIONS	CHANGEOVER TO/FROM		
			TF-500 EQUIV.	TF-501 EQUIV.	TF-700 EQUIV.				TF-500 EQUIV.	TF-501 EQUIV.	TF-700 EQUIV.
279662	280609	279762, 280525, 282582, 286094	276111	—	—	284121	284121	286480	282928	285975	101273
279762	280609	279662, 280525, 282582, 286094	275857	285971	289262	284410	284411	—	283048	286200	289292
280369	280369	282457, 288776	278445	—	289263	284411	284411	284410	283515	—	—
280422	280422	—	275231	—	289264	284803	284804	—	283424	—	—
280525	280609	279662, 279762, 282582, 286094	276961	285982	289265	284804	284804	—	283950	—	—
280526	280526	—	227329	—	—	284924	282013	282509, 282546	283468	285995	289318
280570	280570	280891, 283845, 283955, 288260	276915	—	289863	285158	285158	—	284106	—	—
280607	280607	—	227325	—	—	285187	280609	279662, 279762, 280525, 282582	284265	—	—
280609	280609	279662, 279762, 280525, 282582	227330	—	—	285370	280609	279662, 279762, 280525, 282582	284696	285983	289321
280607	280526	—	275007	—	—	285513	282013	286473, 286477, 286482, 287768	284288	—	—
280767	280767	—	—	—	—	285625	280609	279662, 279762, 280525, 282582	227330	—	—
280798	280798	—	278681	—	—	286094	280609	279662, 279762, 280525, 282582	—	—	289323
280855	280609	279662, 279762, 280525, 282582	276111	—	—	286159	282013	286473, 286477, 286482, 287768	—	—	—
			276961	—	—	286358	282011	—	—	—	—
280891	280570	280570, 283845, 283955, 288260	276962	—	289267	286444	280609	279662, 279762, 280525, 282582	—	—	—
280897	280609	279662, 279762, 280525, 282582	276843	—	—	286467	280609	279662, 279762, 280525, 282582	—	—	289866
281007	281007	—	279009	—	—	286468	280609	279662, 279762, 280525, 282582	—	—	—
281008	281008	—	—	—	—	286471	286471	286649, 286841	—	—	—
281216	280607	—	228336	—	—	286473	282013	286159, 286477, 286482, 287768	—	—	—
281527	280609	279662, 279762, 280525, 282582	277686	—	—	286474	280609	279662, 279762, 280525, 282582	—	—	—
281677	281677	289123, 289548, 289648, 289792	280963	—	—	286477	282013	286159, 286473, 286482, 287768	—	—	—
282011	282011	286358	282010	285974	289940	286478	282013	286473, 286477, 286482, 287768	—	—	—
282013	282013	285513, 286473, 286482, 287768	282012	285899	289276	286480	284121	—	—	—	—
282400	280609	279662, 279762, 280525, 282582	282389	—	—	286482	282013	286159, 286471, 286473, 287768	—	—	—
282401	280609	279662, 279762, 280525, 282582	282395	—	—	286649	286471	286841	—	—	—
282402	280570	280891, 282403, 283955	282397	285977	289864	286818	280609	279662, 279762, 280525, 282582	—	—	—
282403	280570	280891, 282402, 283955	282398	—	—	286841	286471	286649	—	—	289327
282413	280609	279662, 279762, 280525, 282582	—	—	289281	287024	281677	289123, 289548, 289648, 289792	—	—	289328
282435	282435	282011	—	—	—	287105	287105	—	—	—	289330
282457	280369	282785, 288776	—	—	289282	287768	282013	286473, 286477, 286482, 287769	—	—	289331
282509	282013	282546, 286473, 286482, 287768	280989	—	—	287769	282013	286473, 286477, 286482, 286768	—	—	—
282546	282013	282509, 286473, 286482, 287768	281042	—	—	287887	287887	—	—	—	—
282582	280609	279662, 279762, 280525, 282582	281042	—	—	288260	280570	283837, 283845, 283955	—	—	289333
282587	281677	289123, 289548, 289792	—	—	—	288776	280369	282457, 282785	—	—	289868
282785	280369	282457, 288776	278681	—	—	288975	280609	279662, 279762, 280525, 282582	—	—	—
282788	282788	—	—	—	—	289123	281677	282587, 289548, 289648, 289792	—	—	—
283480	282013	285513, 286473, 286482, 287768	282012	—	—	289495	280609	279662, 279762, 280525, 282582	—	—	289351
283562	283562	—	283334	—	—	289548	281677	282587, 289123, 289648, 289792	—	—	—
283837	280570	280891, 283845, 283955, 288260	276962	—	—	289648	281677	282587, 289123, 289548, 289792	—	—	—
283845	280570	280891, 283837, 283845, 288260	276962	—	—	289753	280609	279662, 279762, 280525	—	—	—
283955	280570	280891, 283837, 283845, 288260	276915	—	289289	289792	281677	289123, 289548, 289648	—	—	—
283972	283609	279662, 279762, 280525, 282582	—	—	289270	289793	289793	—	—	—	—

## TU-FLO 600 COMPRESSORS

## FLANGE MOUNT — WATER COOLED

TF-600 COMPR. PC. NO.	CYL. HEAD ASSY.	CYL. BLOCK ASSY.	CRANK- CASE ASSY.	CRANK- CASE BODY	FLANGE TYPE	CRANK- SHAFT	REAR END COVER	AIR STRAINER	GOV.	STUD OR CAP SCREW	CRANK- CASE COVER	CRANK- CASE COVER GASKET
279662	283615	279663	276450	241451	0° TILT	241142	276127	NONE	NONE	NONE	241280	235418
279762	283615	279663	—	248299	0° TILT	231426	231265	NONE	NONE	NONE	241280	235418
A280369	283641	279663	—	240375	75° TILT	231426	231265	NONE	282436	NONE	214789	235418
280422	283615	279663	—	240375	75° TILT	231426	231265	NONE	NONE	230672	214789	235418
280525	283615	279663	276450	241451	0° TILT	241142	276127	NONE	NONE	230672	241280	235418
280526	283615	279663	227749	237399	0° TILT	231426	275577	NONE	NONE	NONE	231965	235418
280570	283615	279663	276450	241451	0° TILT	241142	276127	NONE	NONE	NONE	241280	235418
280607*	—	—	—	—	—	—	—	—	—	—	—	—
280609*	—	—	—	—	—	—	—	—	—	—	—	—
280627*	—	—	—	—	—	—	—	—	—	—	—	—
280767	227453	279663	—	239819	0° TILT	231426	231265	NONE	NONE	NONE	214789	235418
280798	226098	279663	—	240375	75° TILT	244512	276127	NONE	NONE	NONE	214789	240375
280855	226098	279663	276450	241451	0° TILT	241142	276127	NONE	NONE	NONE	241280	235418
280891	283615	279663	276450	241451	0° TILT	241142	276127	NONE	NONE	230672	241280	235418
B280897	283615	279663	276338	241338	0° TILT	241142	276127	226469	277240	NONE	241280	235418
281007	226098	279663	281030	245398	0° TILT	241142	276127	NONE	NONE	NONE	214789	235418
ACD281008	283615	279663	281030	245398	15° TILT	241142	276127	NONE	277192	233798	245400	245399
281216	283615	279663	—	237398	0° TILT	231426	231265	NONE	NONE	230672	231385	235418
A281527	283615	279663	276338	241338	0° TILT	241142	276127	279900	276104	233798	241280	235418
E281677	283641	279663	276338	241338	0° TILT	241142	276127	NONE	NONE	NONE	241280	235418
AF282011	283641	279663	276338	241338	0° TILT	241142	276127	NONE	282423	NONE	241280	235418
AG282013	283641	279663	281044	245402	45° TILT	241142	276127	NONE	283594	NONE	245403	235418
282400	283615	279663	276338	241338	0° TILT	241142	276127	NONE	NONE	NONE	241280	235418
282401	283615	279663	276338	241338	0° TILT	241142	276127	NONE	NONE	NONE	241280	235418
282402	283615	279663	276338	241338	0° TILT	241142	276127	NONE	NONE	NONE	241280	235418
282403	283615	279663	276338	241338	0° TILT	241142	276127	NONE	NONE	NONE	241280	235418
A282413	283615	279663	—	248299	0° TILT	231426	231265	NONE	282423	NONE	241280	235418
A282435	283641	279663	—	240375	75° TILT	231426	231265	NONE	282436	NONE	214789	235418
A282457	283641	279663	—	240375	75° TILT	231426	231265	NONE	282436	NONE	214789	235418
E282509	283641	279663	281044	245402	45° TILT	241142	276127	NONE	NONE	NONE	245403	235418
E282546	283641	279663	281044	245402	45° TILT	241142	276127	NONE	NONE	NONE	245403	235418
AH1282582	283615	279663	276338	241338	0° TILT	241142	276127	NONE	276380	230672	241280	235418
282587	283641	279663	—	248299	0° TILT	231426	231265	NONE	NONE	NONE	241280	235418
282785	283615	279663	—	240375	75° TILT	231426	231265	NONE	NONE	NONE	214789	235418
282788	283641	279663	—	240375	75° TILT	231426	231265	NONE	NONE	NONE	214789	235418
EG283480	283641	279663	281044	245402	45° TILT	241142	276127	NONE	283594	NONE	245403	235418
ACJ283562	283615	279663	276450	241451	0° TILT	247389	276127	NONE	276101	233798	241280	235418
283837	283615	279663	276450	241451	0° TILT	241142	276127	NONE	NONE	230672	241280	235418
283845	283615	279663	276450	241451	0° TILT	241142	276127	NONE	NONE	230672	241280	235418
283955	283615	279663	276450	241451	0° TILT	241142	276127	226469	NONE	230672	241280	235418
283972	283615	279663	—	248299	0° TILT	231426	231265	NONE	NONE	NONE	241280	235418
K284121	283643	279663	282982	246998	0° TILT	241142	276127	NONE	283595	NONE	241280	235418
CFL284410	283615	279663	276450	241451	0° TILT	241142	276114	NONE	277192	233798	241280	235418
CFL284411	283615	279663	276450	241451	0° TILT	241142	276114	NONE	277192	233798	241280	235418
ACF284803	283615	279663	276338	241338	0° TILT	241142	275969	NONE	276108	233798	241280	235418
ACF284804	283615	279663	276338	241338	0° TILT	241142	275969	NONE	276108	233798	241280	235418
284924	283641	279663	276450	241451	0° TILT	241142	276127	NONE	NONE	NONE	245403	235418
285158	283615	279663	—	248394	45° TILT	244512	276127	NONE	NONE	NONE	214789	235418
285187	283615	279663	276450	241451	0° TILT	241142	276127	NONE	NONE	230672	241280	235418
285370	283615	279663	—	248299	0° TILT	244512	276127	NONE	NONE	NONE	241280	235418
AM285513	283641	279663	276450	241451	0° TILT	241142	276127	NONE	283594	NONE	245403	235418
285625	283615	279663	—	248299	0° TILT	231426	231265	NONE	NONE	NONE	241280	235418
A286094	283615	279663	—	248299	0° TILT	231426	231265	NONE	285999	NONE	241280	235418
EG286159	283641	279663	281044	245402	45° TILT	241142	276127	NONE	276558	NONE	245403	235418
AF286358	283641	279663	276338	241338	0° TILT	241142	276127	NONE	283593	NONE	241280	235418
286444	283615	279663	276450	241451	0° TILT	241142	276127	NONE	NONE	NONE	241280	235418
286467	283615	279663	—	248299	0° TILT	231426	231265	NONE	NONE	NONE	241280	235418
286468	283615	279663	—	248299	0° TILT	231426	231265	NONE	NONE	NONE	241280	235418
AG286471	283641	279663	276450	241451	0° TILT	241142	276127	NONE	283594	NONE	245403	235418
EG286473	283641	279663	281044	245402	45° TILT	241142	276127	NONE	276558	NONE	245403	235418
286474	283615	279663	—	248299	0° TILT	231426	231265	NONE	NONE	NONE	241280	235418
AM286477	283641	279663	281044	245402	45° TILT	241142	276127	NONE	283594	NONE	245403	235418
AM286478	283641	279663	281044	245402	45° TILT	241142	276127	NONE	283594	NONE	245403	245402
K286480	283643	279663	282982	246998	0° TILT	241142	276127	NONE	283595	NONE	241280	235418
EG286482	283641	279663	281044	245402	45° TILT	241142	276127	NONE	276558	NONE	245403	235418
A286649	283641	279663	276450	241451	0° TILT	241142	276127	279900	283594	NONE	245403	235418
286818	283615	279663	—	248299	0° TILT	231426	231265	NONE	NONE	NONE	241280	235418
A286841	283641	279663	276450	241451	0° TILT	241142	276127	NONE	283594	NONE	245403	235418
NF287024	283641	279663	276450	241451	0° TILT	241142	276127	NONE	278846	NONE	241280	235418
ADO287105	283615	279663	281030	245398	15° TILT	241142	281036	NONE	276108	230672	245400	245399
GM287768	283641	279663	281044	245402	45° TILT	241142	276127	NONE	283594	NONE	245403	235418
G287769	283641	279663	281044	245402	45° TILT	241142	276127	NONE	287790	NONE	245403	235418
287887	283615	279663	—	248299	0° TILT	231426	231265	NONE	NONE	NONE	241280	235418
288260	283615	279663	276450	241451	0° TILT	241142	276127	NONE	NONE	NONE	241280	235418
288776	283641	279663	—	240375	75° TILT	231426	231265	NONE	NONE	NONE	214789	235418
288975	283615	279663	—	248299	0° TILT	231426	231265	NONE	NONE	NONE	241280	235418
F289123	283641	279663	276338	241338	0° TILT	241142	276127	NONE	NONE	NONE	241280	235418
A289495	283615	279663	276450	241451	0° TILT	241142	231265	NONE	282423	NONE	241280	235418
FN289548	283641	279663	276338	241338	0° TILT	241142	276127	NONE	278846	NONE	241280	235418
FP289648	283641	279663	276338	241338	0° TILT	241142	276127	NONE	288858	NONE	241280	235418
289753	283615	279663	NONE	248299	0° TILT	231426	231265	NONE	NONE	NONE	241280	235418
AG289792	283641	279663	276338	248299	0° TILT	241142	276127	NONE	282423	NONE	241280	292332
289793	283641	279663	281044	245402	45° TILT	241142	276127	NONE	NONE	NONE	245403	245402

TU-FLO 600 COMPRESSORS

FLANGE MOUNT — WATER COOLED

TF-600 COMPR. PC. NO.	AIR INLET LOCATION	AIR DISCH. LOCATION	GOV. PORT POSITION	WATER PORTS			OIL INLET LOCATION	BEARING TYPE		CONN. ROD MTRL
				INLET-1/2" PORTS	OUTLET	SIZE		FRONT	REAR	
279662	LEFT	LEFT	LFT RR	BLK FRT & RT	HD FRT & RT	1/2	BOTTOM RR	SLEEVE	SLEEVE	ALUM
279762	LEFT	LEFT	LFT RR	BLK FRT	HD FRT & RR	1/2	BOTTOM RR	BALL	BALL	ALUM
A280369	RIGHT	TOP	RT RR	BLK RT	HD FRT	1/2	BOTTOM RR	BALL	BALL	ALUM
280422	LEFT	LEFT	LFT RR	BLK RT	HD FRT	1/2	BOTTOM RR	BALL	BALL	ALUM
280525	LEFT	LEFT	LFT RR	BLK RR & RT	HD FRT	1/2	BOTTOM RR	SLEEVE	SLEEVE	ALUM
280526	RIGHT	RIGHT	BOTH OPEN	BLK ALL OPEN	HD ALL OPEN	1/2	OPEN	SLEEVE	SLEEVE	ALUM
280570	RIGHT	RIGHT	RT RR	BLK FRT	HD FRT	1/2	BOTTOM RR	SLEEVE	SLEEVE	ALUM
280607*	LEFT	LEFT	BOTH OPEN	BLK ALL OPEN	HD ALL OPEN	—	OPEN	—	—	—
280609*	LEFT	LEFT	BOTH OPEN	BLK ALL OPEN	HD ALL OPEN	—	OPEN	—	—	—
280627*	LEFT	LEFT	BOTH OPEN	BLK ALL OPEN	HD ALL OPEN	—	OPEN	—	—	—
280767	LEFT	TOP	BOTH OPEN	BLK ALL OPEN	HD ALL OPEN	3/4	OPEN	SLEEVE	SLEEVE	ALUM
280798	RIGHT	RIGHT	BOTH OPEN	BLK ALL OPEN	HD ALL OPEN	3/4	OPEN	SLEEVE	SLEEVE	ALUM
280855	LEFT	LEFT	BOTH OPEN	BLK ALL OPEN	HD ALL OPEN	3/4	OPEN	SLEEVE	SLEEVE	ALUM
280891	RIGHT	RIGHT	RT RR	BLK RR LFT	HD FRT	1/2	BOTTOM RR	SLEEVE	SLEEVE	ALUM
B280897	LEFT	LEFT	LFT RR	BLK RT	HD FRT	1/2	BOTTOM RR	SLEEVE	SLEEVE	ALUM
281007	LEFT	LEFT	BOTH OPEN	BLK ALL OPEN	HD ALL OPEN	3/4	OPEN	SLEEVE	SLEEVE	ALUM
ACD281008	LEFT	LEFT	LFT RR	BLK RR	HD RT	1/2	BOTTOM RR	SLEEVE	SLEEVE	ALUM
281216	LEFT	LEFT	LFT RR	BLK RR	HD FRT	1/2	BOTTOM RR	SLEEVE	SLEEVE	ALUM
A281527	LEFT	LEFT	LFT RR	BLK RT	HD FRT	1/2	BOTTOM RR	SLEEVE	SLEEVE	ALUM
E281677	LEFT	TOP	LFT RR	BLK RT	HD FRT	1/2	BOTTOM RR	SLEEVE	SLEEVE	ALUM
A282011	RIGHT	TOP	RT RR	BLK RR	HD FRT	1/2	BOTTOM RR	SLEEVE	SLEEVE	ALUM
AG282013	LEFT	TOP	LFT RR	BLK RR	HD FRT	1/2	CT RR	SLEEVE	SLEEVE	ALUM
282400	LEFT	LEFT	BOTH PLGD	BLK 5 PORTS OPEN	HD 3 PORTS OPEN	1/2	BOTTOM RR	SLEEVE	SLEEVE	ALUM
282401	LEFT	LEFT	BOTH PLGD	BLK 3 PORTS OPEN	HD 3 PORTS OPEN	1/2	BOTTOM RR	SLEEVE	SLEEVE	ALUM
282402	RIGHT	RIGHT	BOTH PLGD	BLK 5 PORTS OPEN	HD 3 PORTS OPEN	1/2	OPEN	SLEEVE	SLEEVE	ALUM
282403	RIGHT	RIGHT	BOTH PLGD	BLK 5 PORTS OPEN	HD 3 PORTS OPEN	1/2	OPEN	SLEEVE	SLEEVE	ALUM
A282413	LEFT	LEFT	LFT RR	BLK FRT & RT FRT	HD FRT & RT FRT	1/2	BOTTOM RR	BALL	BALL	ALUM
A282435	LEFT	TOP	LFT RR	BLK FRT & RT FRT	HD FRT	1/2	BOTTOM RR	BALL	BALL	ALUM
A282457	RIGHT	TOP	RT RR	BLK RT FRT	HD FRT	1/2	RIGHT RR	BALL	BALL	STEEL
E282509	LEFT	TOP	BOTH OPEN	BLK 5 PORTS OPEN	HD 3 PORTS OPEN	1/2	BOTTOM RR	SLEEVE	SLEEVE	ALUM
E282546	LEFT	TOP	BOTH OPEN	BLK 5 PORTS OPEN	HD 3 PORTS OPEN	1/2	BOTTOM RR	SLEEVE	SLEEVE	ALUM
AH1282582	LEFT	LEFT	LFT RR	BLK RR	HD FRT	1/2	BOTTOM RR	SLEEVE	SLEEVE	ALUM
282587	LEFT	TOP	LFT RR	BLK RT FRT	HD FRT	1/2	BOTTOM RR	BALL	BALL	STEEL
282785	RIGHT	RIGHT	RT RR	BLK RT FRT	HD FRT	1/2	BOTTOM RR	BALL	BALL	ALUM
282788	RIGHT	TOP	RT RR	BLK RT FRT	HD FRT	1/2	BOTTOM RR	BALL	BALL	ALUM
E6283480	LEFT	TOP	LFT RR	BLK RR	HD FRT	1/2	CT RR	SLEEVE	SLEEVE	ALUM
AC1283562	LEFT	LEFT	LFT RR	BLK RR	HD FRT	1/2	BOTTOM RR	SLEEVE	SLEEVE	ALUM
283837	RIGHT	RIGHT	RT RR	BLK LFT & RR	HD FRT	1/2	BOTTOM RR	SLEEVE	SLEEVE	ALUM
283845	RIGHT	RIGHT	RT RR	BLK LFT RR & RR	HD FRT	1/2	BOTTOM RR	SLEEVE	SLEEVE	ALUM
283955	RIGHT	RIGHT	RT RR	BLK LFT RR & RR	HD FRT	1/2	BOTTOM RR	SLEEVE	SLEEVE	ALUM
283972	LEFT	LEFT	LFT RR	BLK FRT	HD RR	1/2	CT RR	BALL	BALL	STEEL
K284121	RIGHT	TOP	RT RR	BLK RT RR	HD RT FRT	1/2	BOTTOM RR	SLEEVE	SLEEVE	ALUM

TF-600 COMPR. PC. NO.	AIR INLET LOCATION	AIR DISCH. LOCATION	GOV. PORT POSITION	WATER PORTS			OIL INLET LOCATION	BEARING TYPE		CONN. ROD MTRL
				INLET-1/2" PORTS	OUTLET	SIZE		FRONT	REAR	
CFL284410	RIGHT	RIGHT	RT FRT	BLK RT RR	HD FRT	1/2	BOTTOM RR	SLEEVE	SLEEVE	ALUM
CFL284411	RIGHT	RIGHT	RT FRT	BLK RT & RR	HD FRT	1/2	CT RR	SLEEVE	SLEEVE	ALUM
ACF284803	LEFT	LEFT	LFT RR	BLK LFT RR	HD FRT	1/2	CT RR	SLEEVE	SLEEVE	ALUM
ACF284804	LEFT	LEFT	LFT RR	BLK LFT RR	HD FRT	1/2	CT RR	SLEEVE	SLEEVE	ALUM
284924	LEFT	TOP	LFT RR	BLK RR	HD FRT	1/2	CT RR	SLEEVE	SLEEVE	ALUM
285158	LEFT	LEFT	LFT RR	BLK 5 PORTS OPEN	HD 3 PORTS OPEN	1/2	BOTTOM RR	BALL	SLEEVE	ALUM
285187	LEFT	LEFT	LFT RR	BLK 5 PORTS OPEN	HD 3 PORTS OPEN	1/2	BOTTOM RR	BALL	SLEEVE	ALUM
285370	LEFT	LEFT	OPEN	BLK 5 PORTS OPEN	HD 3 PORTS OPEN	1/2	BOTTOM RR	BALL	SLEEVE	ALUM
AM285513	LEFT	TOP	LFT RR	BLK RR	HD FRT	1/2	CT RR	SLEEVE	SLEEVE	ALUM
285625	LEFT	LEFT	LFT RR	BLK FRT RT & FRT	HD RT FRT & FRT	1/2	CT RR	BALL	BALL	ALUM
A286094	LEFT	LEFT	LFT RR	BLK FRT RT & FRT	HD FRT	1/2	BOTTOM RR	BALL	SLEEVE	ALUM
E6286159	LEFT	TOP	LFT RR	BLK RR	HD FRT	1/2	CT RR	SLEEVE	SLEEVE	ALUM
AF286358	RIGHT	RIGHT	RT RR	BLK RR	HD FRT	1/2	BOTTOM RR	SLEEVE	SLEEVE	ALUM
286444	LEFT	LEFT	LFT RR	BLK FRT & RT	HD RT & FRT	1/2	BOTTOM RR	SLEEVE	SLEEVE	ALUM
286467	LEFT	LEFT	LFT RR	BLK FRT	HD RR	1/2	CT RR	BALL	BALL	ALUM
286468	LEFT	LEFT	LFT RR	BLK FRT	HD RR	1/2	CT RR	BALL	BALL	ALUM
AG286471	LEFT	TOP	LFT RR	BLK RR	HD FRT	1/2	CT RR	SLEEVE	SLEEVE	ALUM
E6286473	LEFT	LEFT	LFT RR	BLK RR	HD FRT	1/2	CT RR	SLEEVE	SLEEVE	ALUM
286474	LEFT	LEFT	LFT RR	BLK FRT	HD RR	1/2	CT RR	BALL	BALL	STEEL
AM286477	LEFT	TOP	LFT RR	BLK RR	HD FRT	1/2	CT RR	SLEEVE	SLEEVE	ALUM
AM286478	LEFT	TOP	LFT RR	BLK RR	HD FRT	1/2	CT RR	SLEEVE	SLEEVE	ALUM
A286480	RIGHT	RIGHT	RT RR	BLK RT RR	HD RR FRT	1/2	BOTTOM RR	SLEEVE	SLEEVE	ALUM
E6286482	LEFT	TOP	LFT RR	BLK RR	HD FRT	1/2	CT RR	SLEEVE	SLEEVE	ALUM
A286649	LEFT	TOP	LFT RR	BLK RR	HD FRT	1/2	CT RR	SLEEVE	SLEEVE	ALUM
286818	LEFT	LEFT	LFT RR	BLK FRT	HD RR	1/2	CT RR	BALL	BALL	ALUM
A286841	LEFT	TOP	LFT RR	BLK RR	HD FRT	1/2	CT RR	SLEEVE	SLEEVE	ALUM
NF287024	LEFT	TOP	LFT RR	BLK RR	HD FRT	1/2	CT RR	SLEEVE	SLEEVE	ALUM
AD0287105	RIGHT	RIGHT	RT RR	BLK RR	HD FRT	1/2	BOTTOM RR	SLEEVE	SLEEVE	ALUM
GM287768	LEFT	TOP	LFT RR	BLK RR	HD FRT	1/2	CT RR	SLEEVE	SLEEVE	ALUM
G287769	LEFT	TOP	LFT RR	BLK RR	HD FRT	1/2	CT RR	SLEEVE	SLEEVE	ALUM
287887	RIGHT	RIGHT	RT RR	BLK FRT, FRT & LFT	HD FRT, FRT & LFT	1/2	BOTTOM RR	BALL	BALL	ALUM
288260	RIGHT	RIGHT	BOTH PLGD	BLK 5 PORTS OPEN	HD 3 PORTS OPEN	1/2	CT RR	SLEEVE	SLEEVE	STEEL
288776	RIGHT	TOP	RT RR	BLK RR	HD FRT	1/2	BOTTOM RR	BALL	BALL	ALUM
288975	LEFT	LEFT	LFT RR	BLK FRT	HD RR	1/2	BOTTOM RR	BALL	BALL	ALUM
F289123	LEFT	TOP	LFT RR	BLK RR	HD FRT	1/2	BOTTOM RR	SLEEVE	SLEEVE	ALUM
A289495	LEFT	LEFT	LFT RR	BLK LFT & RR	HD LFT & RR	1/2	BOTTOM RR	BALL	BALL	ALUM
FN289548	LEFT	TOP	LFT RR	BLK RR	HD FRT	1/2	BOTTOM RR	SLEEVE	SLEEVE	ALUM
FP289648	LEFT	TOP	LFT RR	BLK RR	HD FRT	1/2	BOTTOM RR	SLEEVE	SLEEVE	ALUM
289753	LEFT	LEFT	LFT FRT	BLK RR	HD RT	1/2	BOTTOM RR	BALL	BALL	ALUM
AG289792	LEFT	LEFT	LFT RR	BLK RR	HD FRT	1/2	BOTTOM RR	SLEEVE	SLEEVE	ALUM
289793	RIGHT	TOP	RT RR	BLK RR	HD FRT	1/2	CT RR	SLEEVE	SLEEVE	ALUM

- A —ADD TWO (2) L.W. 237648, TWO (2) CAP SCREW 240910, ONE (1) GOV. GASKET 236577.
- B —ADD TWO (2) CAP SCREW 240910, ONE (1) CAP SCREW 237757, THREE (3) L.W. 237648, ONE (1) CAP SCREW 237687, ONE (1) L.W. 201318, ONE (1) GOV. ADAPTER 226992, TWO (2) GOV. GASKET 236577.
- C —ADD ONE (1) DISCH. FITTING 213042, TWO (2) L.W. 237648.
- D —ADD ONE (1) STR. ADAPTER 236701, ONE (1) INLET ELBOW 237461, THREE (3) STR. GASKET 236170, ONE (1) PIPE PLUG 233410 (1/2), TWO (2) CAP SCREW 245595, ONE (1) STR. PLATE 238948.
- E —ADD ONE (1) INLET FITTING 277218, TWO (2) CAP SCREW 237687, ONE (1) STR. PLATE 238948, ONE (1) GASKET 236170.
- F —ADD ONE (1) GASKET 236170, ONE (1) STR. PLATE 238948, ONE (1) INLET FITTING 241340, TWO (2) CAP SCREW 237315.
- G —ADD ONE (1) GOV. ADAPTER 245294, TWO (2) CAP SCREW 240910, TWO (2) GOV. GASKET 236577, TWO (2) CAP SCREW 243833, FOUR (4) L.W. 237648.
- H —ADD ONE (1) DISCH. FITTING 217246, TWO (2) L.W. 237648.
- I —ADD ONE (1) INLET ELBOW 237461, TWO (2) CAP SCREW 237315, ONE (1) GASKET 236170, ONE (1) STR. PLATE 238948.
- J —ADD ONE (1) INLET FITTING 229662, ONE (1) STR. PLATE 238948, ONE (1) GASKET 236170, TWO (2) CAP SCREW 237688.
- K —ADD FOUR (4) CAP SCREW 240910, TWO (2) WASHER 232850, TWO (2) NUT 204214, FOUR (4) L.W. 237648, ONE (1) GOV. BRACKET 245105.
- L —ADD ONE (1) GOV. ADAPTER 283338, TWO (2) CAP SCREW 237757, TWO (2) CAP SCREW 240910, ONE (1) GOV. GASKET 236577.
- M —ADD ONE (1) INLET FITTING 244039, ONE (1) STR. PLATE 238948, ONE (1) GASKET 236170, TWO (2) CAP SCREW 237315.
- N —ADD ONE (1) GOV. ADAPTER 283072, ONE (1) CAP SCREW 237315, ONE (1) CAP SCREW 237687, TWO (2) CAP SCREW 240910, TWO (2) GOV. GASKET 236577.
- O —ADD ONE (1) DISCH. FITTING 233018, TWO (2) L.W. 237648.
- P —ADD ONE (1) TACHOMETER ADAPTER 247604, ONE (1) OIL SEAL GASKET 230425, FOUR (4) L.W. 202981, FOUR (4) CAP SCREW 238117, ONE (1) GASKET 248008, ONE (1) END CAP 248009.

NOTE: CONNECTING ROD MATERIAL AND TYPE BEARINGS USED IN RX COMPRESSORS WILL BE AT BENDIX OPTION.

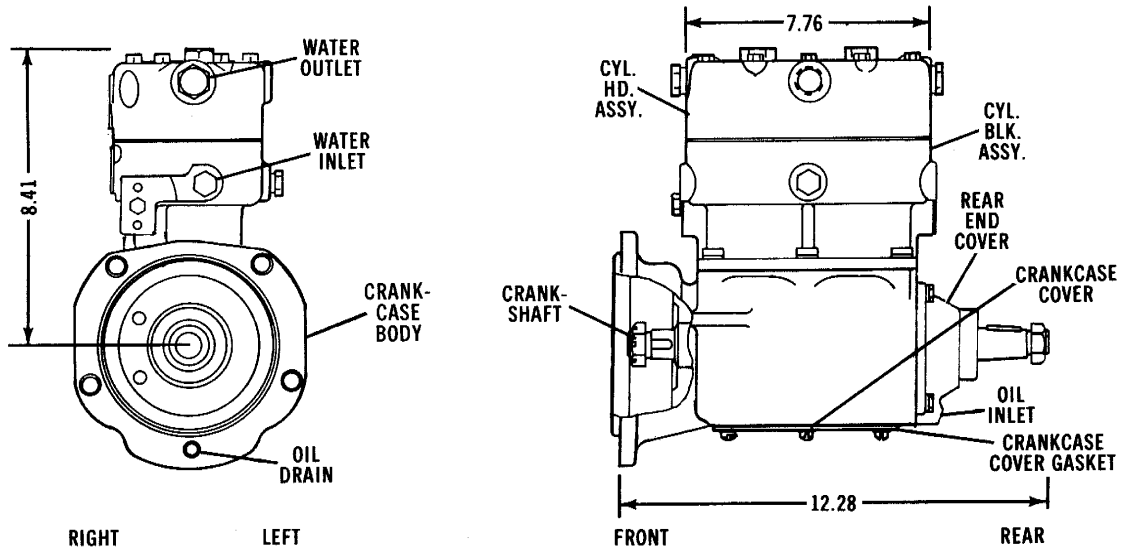
\*RX PC. NOS.

FOR FURTHER DETAILS SEE PG. 3.

MAINTENANCE KITS SHOWN ON PG. 2

TU-FLO 600 COMPRESSORS

FLANGE MOUNT — 0° TILT — THRU DRIVE



TF-600 COMPR. PC. NO.	CYL. HEAD ASSY.	CYL. BLOCK ASSY.	CRANK- CASE ASSY.	CRANK- CASE BODY	CRANK- SHAFT	CRANK- CASE COVER	GOV.	STUD OR CAP SCREW	AIR INLET LOCATION	AIR DISCH. LOCATION	GOV. PORT POSITION	WATER PORTS				BEARING TYPE	
												INLET	SIZE	OUTLET	SIZE	FRONT	REAR
A281341	283615	279663	276450	241451	245703	241280	NONE	230672	RIGHT	RIGHT	RT RR	BLK FRT	3/8	HD RR	1/2	SLEEVE	SLEEVE
281963	283615	279663	276338	241338	241795	241280	NONE	NONE	LEFT	LEFT	LFT RR	BLK FRT & RT	3/8	HD FRT & RT	1/2	SLEEVE	BALL
B283808	283641	279663	276338	241338	241795	245403	276558	NONE	LEFT	TOP	LFT RR	BLK RR	3/8	HD FRT	1/2	SLEEVE	BALL
286888	283615	279663	—	248394	249106	214789	NONE	NONE	RIGHT	RIGHT	RT RR	BLK LFT MID	3/8	HD FRT & FRT LFT	1/2	BALL	BALL
287037	283615	279663	—	248394	249106	214789	NONE	NONE	RIGHT	RIGHT	RT RR	BLK FRT & LFT MID	3/8	HD FRT & FRT LFT	1/2	BALL	BALL

A —ADD DISCHARGE FITTING 233621, TWO (2) L.W. 237648

CONN. ROD MATL IS ALUM.

B —ADD INLET FITTING 277218, TWO (2) CAP SCREW 237687, ONE (1) STRAINER PLATE 238948, ONE (1) GASKET 236170, ONE (1) GOV. ADAPTER 245294, TWO (2) CAP SCREW 240910, TWO (2) GOV. GASKET 236577, TWO (2) CAP SCREW 243833, FOUR (4) L.W. 237648.

NOTE: CONNECTING ROD MATERIAL AND TYPE BEARINGS USED IN RX COMPRESSORS WILL BE AT BENDIX OPTION.

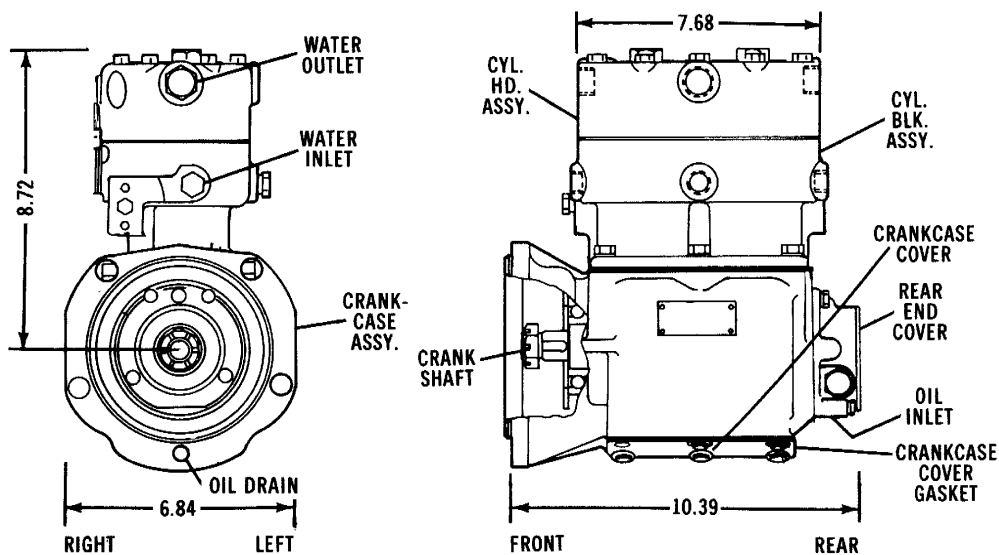
REMF. EXCH. AND CHANGEVER SELECTIONS

TF-600 COMPR. PC. NO.	STD. REMF. EXCH.	OPTIONS	CHANGEVER TO/FROM		
			TF-500 EQUIV.	TF-501 EQUIV.	TF-700 EQUIV.
281341	281341	—	—	—	—
281963	281963	—	276946	—	—
283808	283808	—	—	—	—
286888	286888	—	284934	—	—
287037	287037	—	—	—	—

FOR FURTHER DETAILS  
SEE PG. 3

MAINTENANCE KITS  
SHOWN ON PG. 2

FLANGE MOUNT — 0° TILT — TACHOMETER DRIVE



TF-600 COMPR. PC. NO.	CYL. HEAD ASSY.	CYL. BLOCK ASSY.	CRANK- CASE ASSY.	CRANK- CASE BODY	CRANK- SHAFT	REAR END COVER	CRANK- CASE COVER	CRANK- CASE COVER GASKET	AIR INLET LOCATION	AIR DISCH. LOCATION	GOV. PORT POSITION	WATER PORTS				OIL INLET LOCATION
												INLET	SIZE	OUTLET	SIZE	
A281532	283641	279663	276338	241338	245526	280562	241280	235418	RIGHT	TOP	RT RR	BLK 5 PORTS OPEN	3/8	HD 3 PORTS OPEN	1/2	BOTTOM RR

A —ADD INLET FITTING 277218, TWO (2) CAP SCREW 237687, ONE (1) STR. PLATE 238948, ONE (1) GASKET 236170.  
ADD THE FOLLOWING TACH DRIVE PARTS:

- |   |        |                  |   |        |                   |
|---|--------|------------------|---|--------|-------------------|
| 1 | 245463 | TACHOMETER COVER | 1 | 281087 | HELIX DRIVEN GEAR |
| 1 | 245087 | GASKET           | 4 | 239588 | HH CAP SCREW      |
| 4 | 245464 | FH MACH. SCREW   | 1 | 245091 | CAP NUT           |
| 1 | 245085 | OIL SEAL RING    | 1 | 280561 | SLEEVE ASSY.      |
| 1 | 244440 | RETAINING RING   | 1 | 214901 | WOODRUFF KEY      |
| 1 | 245461 | HELIX DRIVE GEAR |   |        |                   |

FRONT BRG. — SLEEVE  
REAR BRG. — SLEEVE  
CONN. ROD MATL. — ALUM.

CYL. HD. ASSY.	CYL. HD. BODY ASSY.	CYL. HD. BODY
283615	283618	247845
283641	283638	247848

NOTE: CONNECTING ROD MATERIAL AND TYPE BEARINGS USED IN RX COMPRESSORS  
WILL BE AT BENDIX OPTION.

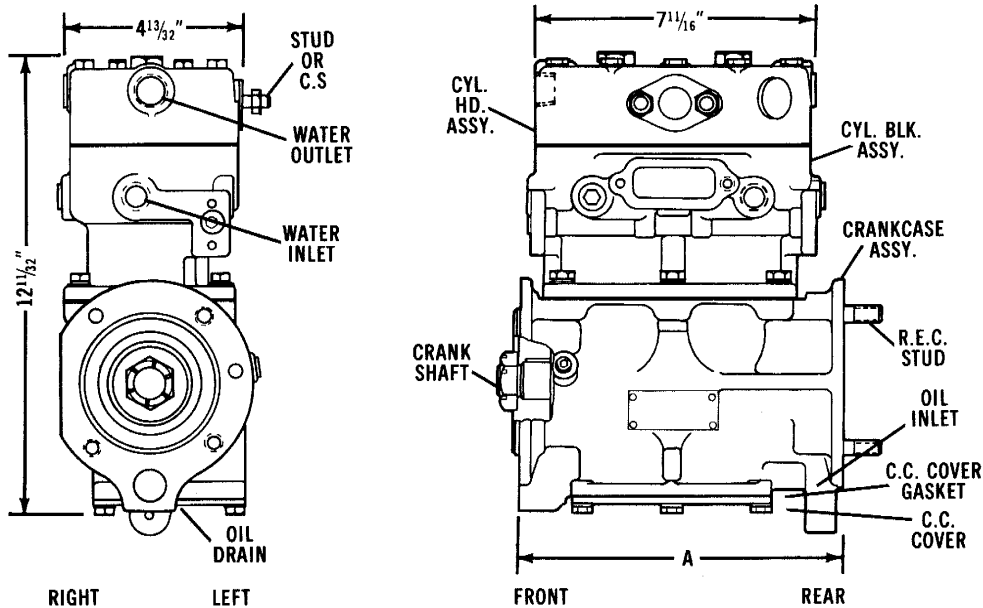
CYL. BLK. ASSY.	CYL. BLK. BODY ASSY.	CYL. BLK. BODY
279663	279664	244362

REMFR. EXCH. AND CHANGEVER SELECTIONS

TF-600 COMPR. PC. NO.	STD. REMFR. EXCH.	OPTIONS	CHANGEVER TO/FROM		
			TF-500	TF-501	TF-700
281532	281532	—	281128	287826	289965

## TU-FLO 600 COMPRESSORS

## CUMMINS DOUBLE FLANGE MOUNT



TF-600 COMPR. PC. NO.	CYL. HEAD ASSY.	CYL. BLOCK ASSY.	CRANK- CASE ASSY.	CRANK- CASE BODY	CRANK- SHAFT	REAR END COVER	STUD IN REAR END COVER	CRANK- CASE COVER	CRANK- CASE COVER GASKET	STUD OR SCREW (IN HD.)	A DIM'N. (FL) INCHES
280222	283615	279663	—	239677	246728	229526	237434	237469	237468	230672	11.25
280238	283615	279663	279708	244389	244386	—	—	244301	244300	235464	8.54
A280310	283615	279663	—	239187	246728	228822	237434	237469	237468	230672	11.25
B280392	283641	280430	—	276980	241749	276983	—	240741	240740	—	9.395
B280393	283641	280430	—	276980	241945	276983	—	240741	240740	—	9.395
B280428	283641	280430	—	279840	241749	276983	—	240741	240740	—	9.395
B280429	283641	280430	—	279840	241749	276983	—	240741	240740	—	9.395
280447	283615	279663	—	241747	240031	240032	—	237469	237468	230672	11.25
280514	283641	279663	—	239677	246728	229526	237434	237469	237468	—	11.25
A280579	283615	279663	—	239187	246728	229526	—	237469	237468	235464	11.25
A280589	283641	279663	—	239677	246728	229526	—	237469	237468	—	11.25
280622*	—	—	—	—	—	—	—	—	—	—	11.25
280626*	—	—	—	—	—	—	—	—	—	—	11.25
A281079	283615	279663	—	237426	240031	240032	—	237469	237468	230672	11.25
A283345	283615	279663	—	239187	246728	228822	237434	237469	237468	235464	11.25
AC283994	283641	279663	—	239677	246728	229526	—	237469	237468	—	11.25
A284018	283615	279663	—	239677	246728	229526	237434	237469	237468	230672	11.25
A284257	283641	279663	279708	239677	244386	—	—	244301	244300	—	8.54
A284259	283641	279663	279708	239677	244386	—	—	244301	244300	—	8.54
284714	283615	279663	285602	249848	249708	—	—	248783	244300	235464	8.54
284719	283641	279663	285602	249848	249708	—	—	248783	244300	—	8.54
284720	283641	279663	285602	249848	249708	—	—	248783	244300	—	8.54
284855	283615	279663	285602	249848	249708	—	—	248783	244300	235464	8.54
C284913	283615	279663	285602	249848	249708	—	—	248783	244300	230672	8.54
C284914	283615	279663	285602	249848	249708	—	—	248783	244300	230672	8.54
C284915	283641	279663	285602	249848	249708	—	—	248783	244300	—	8.54
C284916	283641	279663	285602	249848	249708	—	—	248783	244300	—	8.54
285393	283615	279663	284701	284359	248785	—	—	248783	244300	—	8.54
285479	283615	279663	285602	249848	249708	—	—	248783	244300	235464	8.54
B285521	283641	280430	280547	244560	241749	276983	—	240741	240740	—	9.40
288686	283615	279663	283266	249848	249708	—	—	248783	244300	235464	8.54

NOTE: CONNECTING ROD MATERIAL AND TYPE BEARINGS USED IN RX COMPRESSORS WILL BE AT BENDIX OPTION.

\*RX PC. NOS.

CYL. HD. ASSY.	CYL. HD. BODY ASSY.	CYL. HD. BODY
283615	283618	245845
283641	283638	247848

CYL. BLK. ASSY.	CYL. BLK. BODY ASSY.	CYL. BLK. BODY
279663	285602	249848
280430	280547	244560

TU-FLO 600 COMPRESSORS

CUMMINS DOUBLE FLANGE MOUNT

TF-600 COMPR. PC. NO.	AIR INLET LOCATION	AIR DISCH. LOCATION	GOV. PORT LOCATION	WATER PORTS				OIL INLET LOCATION	BEARING TYPE		CONN. ROD MATERIAL
				INLET	SIZE	OUTLET	SIZE		FRONT	REAR	
280222	LEFT	LEFT	LFT RR	BLK RR	3/8	HD RR	1/2	BOTTOM RR	BALL	SLEEVE	ALUM
280238	LEFT	LEFT	LFT RR	BLK FRT	3/8	HD FRT	1/2	BOTTOM RR	BALL	SLEEVE	ALUM
A280310	LEFT	LEFT	LFT RR	BLK RR	3/8	HD RR	1/2	BOTTOM RR	BALL	SLEEVE	ALUM
B280392	LEFT	TOP	LFT RR	BLK RT FRT	3/8	HD FRT	1/2	SHFT FRT	SLEEVE	SLEEVE	ALUM
B280393	LEFT	TOP	LFT RR	BLK RT FRT	3/8	HD FRT	1/2	SHFT FRT	SLEEVE	SLEEVE	ALUM
B280428	LEFT	TOP	LFT RR	BLK RT FRT	3/8	HD FRT	1/2	SHFT FRT	SLEEVE	SLEEVE	ALUM
B280429	LEFT	TOP	LFT RR	BLK RT FRT	3/8	HD FRT	1/2	SHFT FRT	BALL	BALL	ALUM
280447	LEFT	LEFT	LFT RR	BLK FRT	3/8	HD FRT	1/2	BOTTOM RR	BALL	BALL	ALUM
280514	LEFT	TOP	LFT RR	BLK 4 PORTS OPEN	3/8	HD 3 PORTS OPEN	1/2	BOTTOM RR	BALL	SLEEVE	ALUM
A280579	LEFT	LEFT	LFT RR	BLK FRT	3/8	HD FRT	1/2	BOTTOM RR	BALL	SLEEVE	ALUM
A280589	LEFT	TOP	LFT RR	BLK 4 PORTS OPEN	3/8	HD 3 PORTS OPEN	1/2	BOTTOM RR	BALL	SLEEVE	ALUM
280622*	LEFT	LEFT	OPEN	BLK ALL OPEN	3/8	HD ALL OPEN	1/2	BOTTOM RR	—	—	—
280626*	LEFT	TOP	LFT RR	BLK ALL OPEN	3/8	HD ALL OPEN	1/2	BOTTOM RR	—	—	—
A281079	LEFT	LEFT	LFT RR	BLK FRT	3/8	HD FRT	1/2	BOTTOM RR	BALL	BALL	ALUM
A283345	LEFT	LEFT	LFT RR	BLK FRT	3/8	HD FRT	1/2	BOTTOM RR	BALL	SLEEVE	ALUM
AC283994	LEFT	TOP	LFT RR	BLK 4 PORTS OPEN	3/8	HD 3 PORTS OPEN	1/2	BOTTOM RR	BALL	SLEEVE	STEEL
A284018	LEFT	LEFT	LFT RR	BLK RR	3/8	HD RR	1/2	BOTTOM RR	BALL	SLEEVE	STEEL
A284257	LEFT	TOP	LFT RR	BLK FRT	3/8	HD FRT	1/2	BOTTOM RR	BALL	SLEEVE	ALUM
A284259	LEFT	TOP	LFT RR	BLK FRT	3/8	HD FRT	1/2	BOTTOM RR	BALL	SLEEVE	ALUM
284714	LEFT	LEFT	LFT RR	BLK FRT	3/8	HD FRT	1/2	CC FRT FL	SLEEVE	BALL	ALUM
284719	LEFT	TOP	LFT RR	BLK FRT	3/8	HD FRT	1/2	CC FRT FL	SLEEVE	BALL	ALUM
284720	LEFT	TOP	LFT RR	BLK FRT	3/8	HD FRT	1/2	CC FRT FL	SLEEVE	BALL	ALUM
284855	LEFT	LEFT	LFT RR	BLK FRT	3/8	HD FRT	1/2	CC FRT FL	SLEEVE	BALL	ALUM
C284913	LEFT	LEFT	LFT RR	BLK RR LFT & RR	3/8	HD RR	1/2	CC FRT FL	SLEEVE	BALL	ALUM
C284914	LEFT	LEFT	LFT RR	BLK FRT	3/8	HD FRT	1/2	CC FRT FL	SLEEVE	BALL	ALUM
C284915	LEFT	TOP	LFT RR	BLK 5 PORTS OPEN	3/8	HD 3 PORTS OPEN	1/2	CC FRT FL	SLEEVE	BALL	ALUM
C284916	LEFT	TOP	LFT RR	BLK 5 PORTS OPEN	3/8	HD 3 PORTS OPEN	1/2	CC FRT FL	SLEEVE	BALL	ALUM
285393	LEFT	LEFT	OPEN	BLK 5 PORTS OPEN	3/8	HD 3 PORTS OPEN	1/2	CC FRT FL	SLEEVE	BALL	ALUM
285479	LEFT	LEFT	LFT RR	BLK FRT	3/8	HD FRT	1/2	CC FRT FL	SLEEVE	BALL	STEEL
B285521	LEFT	TOP	LFT RR	BLK FRT	3/8	HD FRT	1/2	SHFT FRT	SLEEVE	SLEEVE	STEEL
288686	LEFT	LEFT	LFT RR	BLK FRT	3/8	HD FRT	1/2	CC FRT FL	SLEEVE	BALL	ALUM

A —ADD DRAIN COCK 237705

B —ADD ONE (1) INLET FITTING 242070, ONE (1) PIPE PLUG 232999 (1/8), ONE (1) STR. GASKET 236170, ONE (1) STR. PLATE 238948, TWO (2) CAP SCREW 237315.

C —ADD ONE (1) STR. GASKET 236170, ONE (1) STR. PLATE 238948.

NOTE: CONNECTING ROD MATERIAL AND TYPE BEARINGS USED IN RX COMPRESSORS WILL BE AT BENDIX OPTION.

\*RX PC. NOS.

REMFR. EXCH. AND CHANGEOVER SELECTIONS

TF-600 COMPR. PC. NO.	STD. REMFR. EXCH.	OPTIONS	CHANGEOVER TO/FROM		
			TF-500 EQUIV.	TF-501 EQUIV.	TF-600 EQUIV.
280222	280622	280310, 280579, 283345, 284018	276951	—	—
280238	280238	—	279707	—	—
280310	280622	280222, 280579, 283345, 284018	228789	—	—
280392	280392	—	276978	—	—
280393	280393	—	277198	—	—
280428	280428	285521	279838	—	—
280429	280429	—	279839	—	—
280447	280447	—	276974	—	—
280514	280626	280589	276600	—	—
280579	280622	280222, 280310, 283345, 284018	275729	—	—
280589	280626	280514	229525	—	—
280622	280622	280222, 280579, 283345, 284018	228443	—	—
280626	280626	280514, 280589	229525	—	—
280629	280629	—	228835	—	—
281079	280447	—	229895	—	—
283345	280622	280222, 280310, 280579, 284018	—	—	—
283994	283994	—	283992	—	—
284018	280622	280222, 280310, 280579, 283345	—	—	—
284257	284259	—	284140	—	—
284259	284259	284257	284160	—	—
284714	284714	284855, 284913, 284914, 285393	284699	286037	289300
284719	284720	284915, 284916	284717	—	289301
284720	284720	284719, 284915, 284916	284718	—	—
284855	284714	284913, 284914, 285393, 285479	284933	—	—
284913	284714	284914, 285393, 285479, 288686	284699	—	—
284914	284714	284855, 285393, 285479, 288686	284699	—	—
284915	284720	284719, 284916	284910	—	—
284916	284720	284719, 284915	284911	—	—
285393	284714	284855, 284913, 284914, 285479	284699	—	—
285479	284714	284855, 284913, 284914, 285393	285478	—	—
285521	280428	—	285480	—	—
288686	284714	284855, 284913, 284914, 285393	—	—	289346

FOR FURTHER DETAILS  
SEE PG. 3.

MAINTENANCE KITS  
SHOWN ON PG. 2.

MACK FLANGE — WATER COOLED

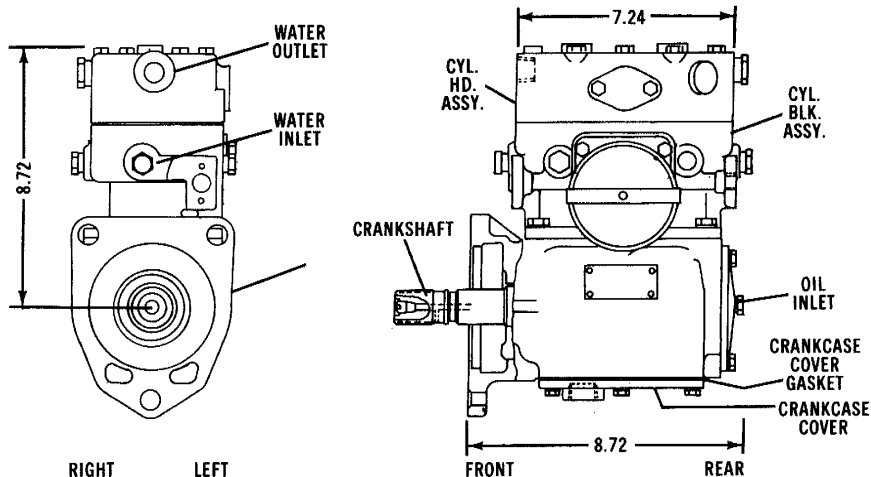


FIG. 1

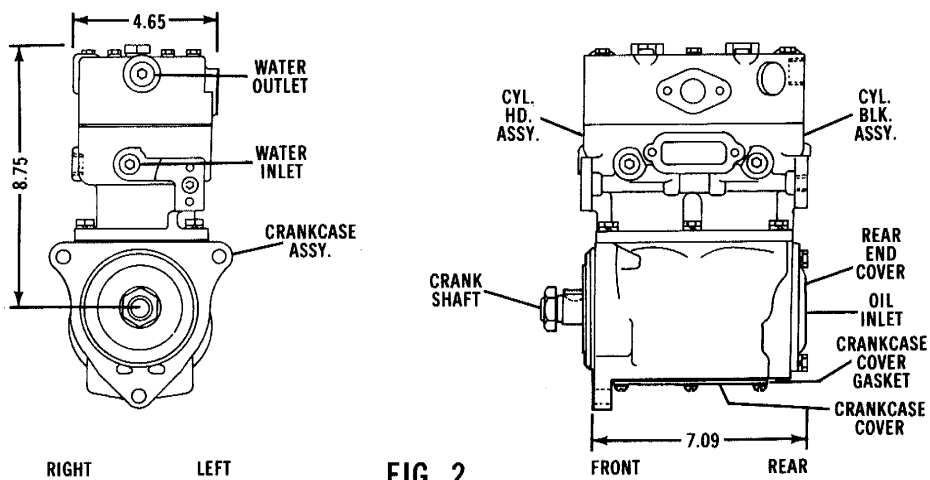


FIG. 2

MAINTENANCE KITS  
SHOWN ON PG. 2

FOR FURTHER  
DETAILS SEE PG. 3

CYL. HD. ASSY.	CYL. HD. BODY ASSY.	CYL. HD. BODY
226098	226315	236213
278585	227454	237695
283615	283618	247845
283641	283638	247848

CYL. BLK. ASSY.	CYL. BLK. BODY ASSY.	CYL. BLK. BODY
279663	279664	244362
280847	280848	245293

## TU-FLO 600 COMPRESSORS

## MACK FLANGE — WATER COOLED

TF-600 COMPR. PC. NO.	CYL. HEAD ASSY.	CYL. BLOCK ASSY.	CRANK- CASE ASSY.	CRANK- CASE BODY	CRANK SHAFT FIG.	REAR END COVER	AIR STR.	CRANK- CASE COVER	CRANK- CASE COVER GASKET	AIR INLET LOCATION	AIR DISCH. LOCATION	GOV. LOCATION	WATER PORTS				OIL INLET LOCATION	BEARING TYPE		CONN. ROD MTRL.
													INLET	SIZE	OUTLET	SIZE		FRONT	REAR	
280520	278585	279663	275431	240574-1	244091	275969	NONE	243598	235418	LEFT	TOP	LEFT RR	BLK-4 PORTS	3/8	HD-3 PORTS	3/8	CT-RR	SLEEVE	SLEEVE	ALUM
280522	278585	279663	275431	240574-1	244091	275969	NONE	243598	235418	LEFT	TOP	LEFT RR	BLK-LFT RR	3/8	HD-RT FRT	3/8	CT-RR	SLEEVE	SLEEVE	ALUM
A280556	226098	279663	275431	240574-1	244723	276127	NONE	243598	235418	LEFT	LEFT	LEFT RR	BLK-4 PORTS	3/8	HD-3 PORTS	3/8	CT-RR	SLEEVE	SLEEVE	ALUM
280608*	—	—	—	—	—	—	—	—	—	RIGHT	RIGHT	—	BLK-RR & LFT RR	1/2	HD-2 PORTS RR	3/8	SHFT-FRT	—	—	—
280628*	—	—	—	—	-2	—	—	—	—	LEFT	LEFT	FRT & RR	BLK-ALL OPEN	1/2	HD-ALL OPEN	3/8	CT-RR	—	—	—
A280725	283615	279663	275431	240574-1	244723	276127	NONE	243598	235418	LEFT	LEFT	LEFT RR	BLK-4 PORTS	1/2	HD-3 PORTS	3/8	CT-RR	SLEEVE	SLEEVE	ALUM
A280774	283615	279663	275431	240574-1	244723	276127	NONE	243598	235418	LEFT	LEFT	LEFT RR	BLK-4 PORTS	1/2	HD-3 PORTS	3/8	CT-RR	SLEEVE	SLEEVE	ALUM
280859	226098	280847	—	240737-2	240739	275577	NONE	243324	243323	LEFT	LEFT	LEFT RR	BLK-RT FRT	3/8	HD-RR	3/8	CT-RR	BALL	SLEEVE	ALUM
280860	226098	280847	—	240737-2	240739	275577	NONE	243324	243323	LEFT	LEFT	LEFT RR	BLK-RT FRT	3/8	HD-RR	3/8	CT-RR	BALL	SLEEVE	ALUM
281051	283641	279663	275431	240574-1	244091	275969	NONE	243598	235418	RIGHT	TOP	RT-RR	BLK-RR	1/2	HD-3 PORTS	3/8	CT-RR	SLEEVE	SLEEVE	ALUM
A281155	283641	279663	275431	240574-1	244091	275969	NONE	243598	235418	RIGHT	TOP	RT-RR	BLK-4 PORTS	1/2	HD-3 PORTS	3/8	CT-RR	SLEEVE	SLEEVE	ALUM
A281157	283615	279663	275431	240574-1	244723	276167	NONE	243598	235418	RIGHT	RIGHT	RT-RR	BLK-4 PORTS	1/2	HD-3 PORTS	3/8	CT-RR	SLEEVE	SLEEVE	ALUM
B282025	283615	279663	—	237422-1	245843	275969	NONE	243598	235418	LEFT	LEFT	LEFT RR	BLK-RR	1/2	HD-3 PORTS	3/8	SHFT FRT	BALL	SLEEVE	ALUM
283822	283615	280847	—	240737-2	240739	275577	NONE	243324	243323	LEFT	LEFT	LEFT RR	BLK-RT FRT	1/2	HD-RR	3/8	CT-RR	BALL	SLEEVE	STEEL
283823	283615	280847	—	240737-2	240739	275577	NONE	243324	243323	LEFT	LEFT	LEFT RR	BLK-RT FRT	1/2	HD-RR	3/8	CT-RR	BALL	SLEEVE	STEEL
284022	283615	279663	275431	240574-1	244723	276127	NONE	243598	235418	LEFT	LEFT	LEFT RR	BLK-3 PORTS	1/2	HD-3 PORTS	3/8	CT-RR	SLEEVE	SLEEVE	ALUM
284306	283615	279663	282585	246803-1	240578	275969	NONE	214789	235418	RIGHT	RIGHT	RT FRT	BLK-FRT	1/2	HD-RR	3/8	SHFT FRT	SLEEVE	SLEEVE	ALUM
284307	283615	279663	282585	246803-1	240578	275969	NONE	214789	235418	RIGHT	RIGHT	RT FRT	BLK-FRT	1/2	HD-RR	3/8	SHFT FRT	SLEEVE	SLEEVE	ALUM
285100	283615	279663	284774	284359-1	248839	248848	NONE	214789	235418	RIGHT	RIGHT	RT FRT	BLK-FRT	1/2	HD-RR	3/8	SHFT FRT	SLEEVE	BALL	ALUM
285108	283615	279663	284774	284359-1	248839	248848	NONE	214789	235418	RIGHT	RIGHT	RT FRT	BLK-FRT	1/2	HD-RR	3/8	SHFT FRT	SLEEVE	BALL	ALUM
285323	283615	279663	275431	240574-1	244723	276127	NONE	243598	235418	LEFT	LEFT	LFT RR	BLK-3 PORTS	1/2	HD-3 PORTS	3/8	CT-RR	SLEEVE	SLEEVE	ALUM
285331	283615	279663	275431	240574-1	240578	275969	NONE	214789	235418	RIGHT	RIGHT	RT-RR	BLK-RR & LFT RR	1/2	HD-2 PORTS RR	3/8	SHFT FRT	SLEEVE	SLEEVE	ALUM
286220	283615	279663	284774	284359-1	248839	248848	NONE	214789	235418	RIGHT	RIGHT	RT FRT	BLK-RT FRT	1/2	HD-RR	3/8	SHFT FRT	SLEEVE	BALL	STEEL
286221	283615	279663	284774	284359-1	248839	248848	NONE	214789	235418	RIGHT	RIGHT	RT FRT	BLK-RT FRT	1/2	HD-RR	3/8	SHFT FRT	SLEEVE	BALL	STEEL
286866	283641	279663	—	240301-1	244498	275969	NONE	214789	235418	RIGHT	TOP	RT RR	BLK-RR	1/2	HD-FRT	3/8	CT-RR	BALL	SLEEVE	ALUM
286867	283641	279663	—	240301-1	244498	275969	NONE	214789	235418	RIGHT	TOP	RT-RR	BLK-RR	1/2	HD-FRT	3/8	CT-RR	BALL	SLEEVE	ALUM
286870	283641	279663	—	240301-1	248794	275969	NONE	214789	235418	RIGHT	TOP	RT-RR	BLK-RR	1/2	HD-FRT	3/8	CT-RR	BALL	SLEEVE	ALUM
287828	283615	279663	—	245213-1	245219	236578	NONE	222610	235418	RIGHT	RIGHT	RT-RR	BLK-FRT	1/2	HD-FRT	3/8	CT-RR	BALL	BALL	ALUM
288481	283641	279663	275431	240580-1	244723	276167	NONE	243598	235418	RIGHT	TOP	RT-RR	BLK-FRT	1/2	HD-RR	3/8	CT-RR	SLEEVE	SLEEVE	ALUM
288710	283641	279663	284026	248337-1	249273	275969	NONE	249272	292332	LEFT	TOP	LFT-RR	BLK-LFT RR	1/2	HD-FRT	3/8	SHFT FRT	SLEEVE	SLEEVE	ALUM
288714	283641	279663	—	240301-1	244498	275969	NONE	214789	235418	LEFT	TOP	LFT-RR	BLK-FRT	1/2	HD-RR	3/8	CT-RR	BALL	SLEEVE	ALUM
288715	283641	279663	—	240301-1	248794	275969	NONE	214789	235418	LEFT	TOP	LFT-RR	BLK-FRT	1/2	HD-RR	3/8	CT-RR	BALL	SLEEVE	ALUM
289172	283641	279663	284026	248337-1	244723	275969	NONE	—	—	LEFT	TOP	LFT-FRT	BLK-RT	1/2	HD-RR	3/8	CT-RR	SLEEVE	SLEEVE	ALUM

A — ADD ONE (1) STR. GASKET, 236170, ONE (1) STR. PLATE, 238948.

B — ADD TWO (2) L.W. 237648, TWO (2) CAP SCREW 240910, ONE (1) GASKET 236577 (WITH GOV.) ADD ONE (1) GASKET 236170, ONE (1) STR. PLATE 238948, ONE (1) INL. FITT. 241340, TWO (2) CAP SCREW 237315 (AIR INTAKE), ADD TWO (2) STUD 230992 (IN HD.). ADD ONE (1) DISCH. FITT. 237438, TWO (2) L.W. 237648, TWO (2) NUT 203145 (DISCH. PORT), ADD GOVERNOR 277192.

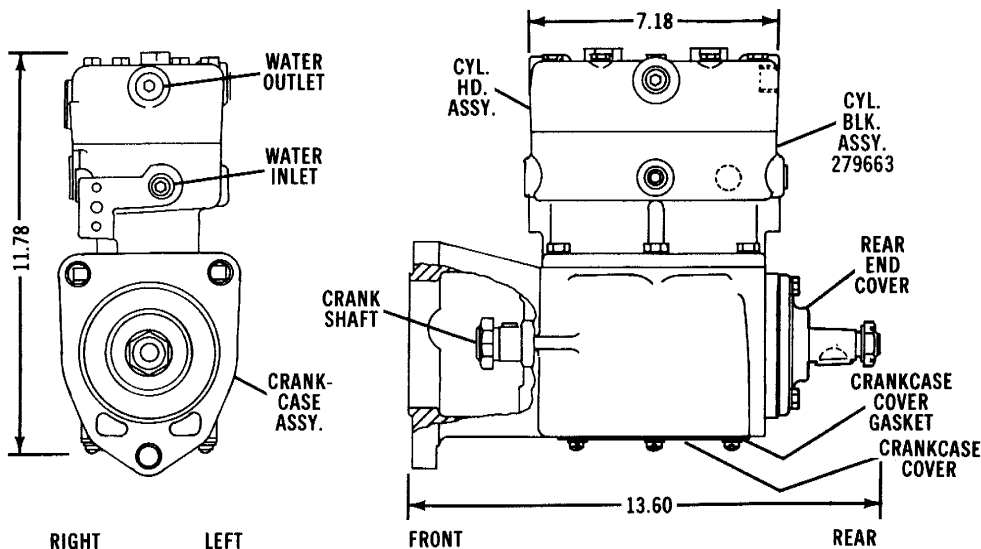
NOTE: CONNECTING ROD MATERIAL AND TYPE BEARINGS USED IN RX COMPRESSORS WILL BE AT BENDIX OPTION. \*RX PC. NOS.

## REMFR. EXCH. AND CHANGEVER SELECTIONS

TF-600 COMPR. PC. NO.	STD. REMFR. EXCH.	OPTIONS	CHANGEVER TO/FROM		
			TF-500 EQUIV.	TF-501 EQUIV.	TF-700 EQUIV.
280520	280520	280522	277739	—	—
280522	280520	—	277739	—	—
			277762	—	—
280556	280556	284022, 285323	279995	—	—
280608	280608	285331	227326	—	—
280628	280628	283822, 283823	277122	—	—
280725	—	SUPERSEDED BY 280556	279995	—	—
280774	280774	—	277738	—	—
280859	280628	SUPERSEDED BY 283822	275568	—	—
280860	280628	SUPERSEDED BY 283823	277122	—	—
281051	281051	281155	281021	—	—
281155	281051	—	281128	—	—
			281532	—	—
281157	281157	—	282023	—	—
282025	282025	—	278811	—	—
283822	280628	283823	277122	—	289246
283823	280628	283822	277122	—	—
284022	280556	285323	284024	286550	—
284306	284307	—	—	—	—
284307	284307	284306	—	—	—
285100	285108	—	—	—	289251
285108	285108	285100, 286220, 286221	—	—	—
285323	280556	284022	—	—	—
285331	280608	—	283792	—	—
286220	285108	285100, 286221	—	—	—
286221	285108	285100, 286220	—	—	—
286866	286866	286867	283788	—	—
286867	286866	—	283789	—	—
286870	286870	286871	284710	—	—
286871	286870	—	284711	—	—
287828	287828	—	—	—	289257
288481	288481	—	284310	286551	—
288710	288710	—	—	—	289258
288714	288714	—	—	—	—
288715	288715	—	—	—	—
289172	289172	—	—	—	289743

TU-FLO 600 COMPRESSORS

MACK EXTENDED FLANGE — THRU DRIVE



TF-600 COMPR. PC. NO.	CYL. HEAD ASSY.	CRANK- CASE ASSY.	CRANK- CASE BODY	CRANK- SHAFT	AIR INLET LOCATION	AIR DISCH. LOCATION	GOV. PORT POSITION	WATER PORTS				OIL INLET LOCATION	BEARING TYPE	
								INLET	SIZE	OUTLET	SIZE		FRONT	REAR
282521	226098	—	237422	240950	RIGHT	RIGHT	RT RR	BLK RR	3/8	HD RR	3/8	SHFT FRT	BALL	BALL
285099	283615	282585	246803	244682	RIGHT	RIGHT	RT RR	BLK FRT	3/8	HD RR	1/2	SHFT FRT	SLEEVE	BALL
285107	283615	282585	246803	244683	RIGHT	RIGHT	RT RR	BLK FRT	3/8	HD RR	1/2	SHFT FRT	SLEEVE	BALL

NOTE: CONNECTING ROD MATERIAL AND TYPE BEARINGS USED IN RX COMPRESSORS WILL BE AT BENDIX OPTION.

CONN. ROD MATL IS ALUM.

CYL. HD. ASSY.	CYL. HD. BODY ASSY.	CYL. HD. BODY
226098	226315	236213
283615	283618	237695

CYL. BLK. ASSY.	CYL. BLK. BODY ASSY.	CYL. BLK. BODY
279663	279664	244362

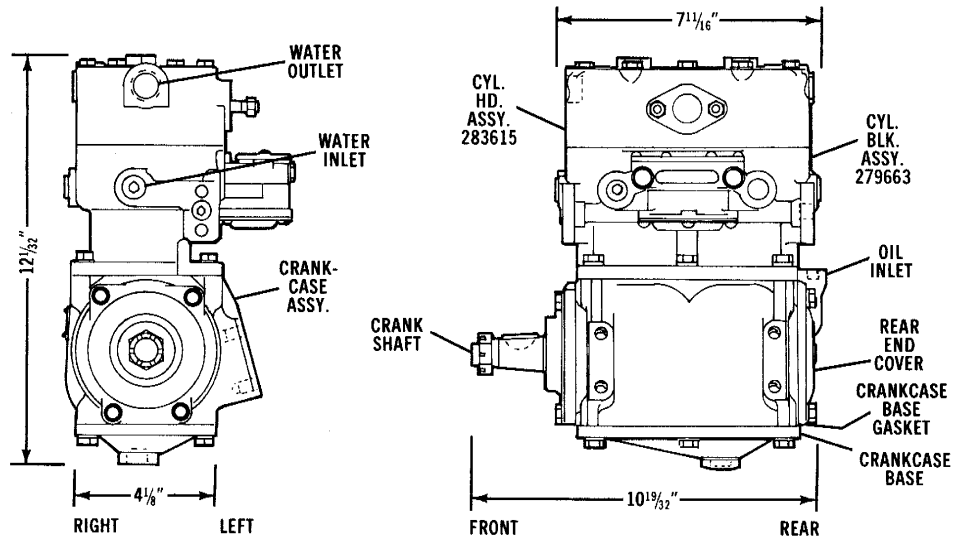
REMFR. EXCH. AND CHANGEOVER SELECTIONS

TF-600 COMPR. PC. NO.	STD. REMFR. EXCH.	OPTIONS	CHANGEOVER TO/FROM		
			TF-500 EQUIV.	TF-501 EQUIV.	TF-700 EQUIV.
282521	282521	—	275434	—	—
285099	285107	—	—	—	—
285107	285107	—	—	—	—

FOR FURTHER DETAILS  
SEE PG. 3

MAINTENANCE KITS  
SHOWN ON PG. 2

## SIDE MOUNT — WATER COOLED



TF-600 COMPR. PC. NO.	AIR STRAINER	GOV.	CRANK- CASE COVER	AIR INLET LOCATION	AIR DISCH. LOCATION	GOV. PORT LOCATION	WATER PORTS			
							INLET	SIZE	OUTLET	SIZE
280446	226469	NONE	243336	LEFT	LEFT	LFT RR	BLK LFT RR	3/8	HD FRT	1/2
A282853	226469	276380	246101	RIGHT	RIGHT	RT FRT	BLK LFT RR	3/8	HD FRT	1/2
B283662	226469	276336	246101	RIGHT	RIGHT	RIGHT	BLK LFT FRT	3/8	HD FRT	1/2
C287988	NONE	NONE	246101	RIGHT	RIGHT	RT RR	BLK RR	3/8	HD FRT	1/2
C287989	NONE	NONE	246101	RIGHT	RIGHT	RT RR	BLK RR	3/8	HD FRT	1/2

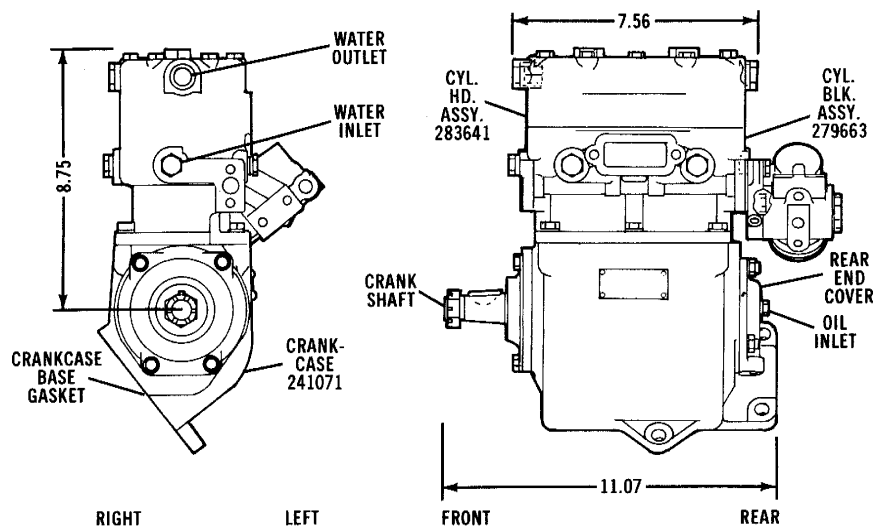
- A —ADD ONE (1) DISCH. FITTING 213042, TWO (2) L.W. 237648, ONE (1) GOV. ADAPTER 228154, TWO (2) GOV. GASKET 236577, ONE (1) CAP SCREW 237757, ONE (1) CAP SCREW 237687, TWO (2) CAP SCREW 240910, FOUR (4) L.W. 237648.
- B —ADD TWO (2) L.W. 237648, TWO (2) CAP SCREW 240910, ONE (1) GOV. GASKET 236577, ONE (1) BRACKET ASSY. 281141, THREE (3) CAP SCREW 203847, THREE (3) SPACER.
- C —ADD ONE (1) GASKET 236170, ONE (1) STR. PLATE 238948, INLET FITTING 241340, TWO (2) CAP SCREW 237315, ONE (1) DISCH. FITTING 213042, TWO (2) L.W. 237648.

## REMF. EXCH. AND CHANGEVER SELECTIONS

TF-600 COMPR. PC. NO.	STD. REMF. EXCH.	OPTIONS	CHANGEVER TO/FROM		
			TF-500 EQUIV.	TF-501 EQUIV.	TF-700 EQUIV.
280446	280446	—	279252	—	—
282853	282853	—	283514	—	—
			277128	286556	—
			281469	286565	—
283662	283662	287988, 287989	277128	286556	—
287988	283662	287989	—	—	—
			287988	—	—

TU-FLO 600 COMPRESSORS

OFFSET MOUNT — WATER COOLED



TF-600 COMPR. PC. NO.	AIR INLET LOCATION	AIR DISCH. LOCATION	GOV. GOV. PORT POSITION	WATER PORTS				OIL INLET LOCATION	BEARING TYPE		CONN. ROD MATL	
				INLET	SIZE	OUTLET	SIZE		FRONT	REAR		
280624*	LEFT	TOP	OPEN	OPEN	BLK ALL OPEN	3/8	HD ALL OPEN	1/2	IN CC	—	—	—
A280950	LEFT	TOP	276380	LEFT RR	BLK RR	3/8	HD FRT	1/2	IN CC	BALL	SLEEVE	ALUM

A —ADD GOV. ADAPTER 275191, TWO (2) GOV. GASKET 236577, ONE (1) CAP SCREW 237577, ONE (1) CAP SCREW 237315, TWO (2) CAP SCREW 240910, FOUR (4) L.W. 237648.

NOTE: CONNECTING ROD MATERIAL AND TYPE BEARINGS USED IN RX COMPRESSORS WILL BE AT BENDIX OPTION.

\*RX PC. NOS.

REMF. EXCH. AND CHANGEVER SELECTIONS

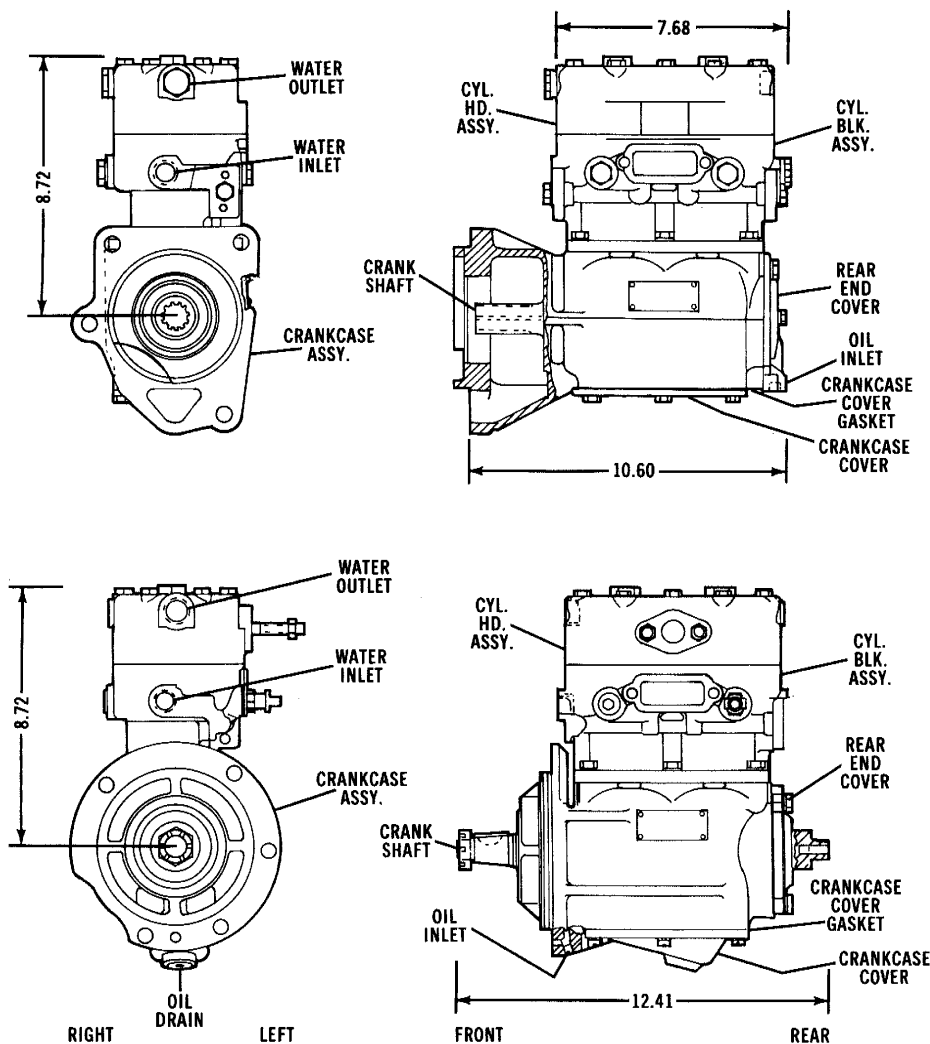
TF-600 COMPR. PC. NO.	STD. REMF. EXCH.	OPTIONS	CHANGEVER TO/FROM		
			TF-500 EQUIV.	TF-501 EQUIV.	TF-700 EQUIV.
280624	280624	280950	229078	—	—
280950	280624	—	280387	—	—

FOR FURTHER DETAILS  
SEE PG. 3

MAINTENANCE KITS  
SHOWN ON PG. 2

TU-FLO 600 COMPRESSORS

MISCELLANEOUS FLANGE MOUNTS



TF-600 COMPR. PC. NO.	CYL. HEAD ASSY.	CYL. BLOCK ASSY.	CRANK- CASE ASSY.	CRANK- CASE BODY	CRANK- SHAFT	REAR END COVER	STUD OR CAP SCREW	CRANK- CASE COVER	CRANK- CASE COVER GASKET	AIR INLET LOCATION	AIR DISCH. LOCATION	GOV. PORT POSITION	WATER PORTS				OIL INLET		BEARING TYPE	
													INLET	SIZE	OUTLET	SIZE	LOCATION	FRONT	REAR	
282340	227453	279663	281543	245888	245889	276127	NONE	243598	235418	LEFT	TOP	BOTH PLGD	BLK FRT	3/8	HD RR	3/8	BOTTOM RR	SLEEVE	SLEEVE	
AB283317	283615	280430	224124	233711	236612	236620	230672	230542	235460	LEFT	LEFT	LFT RR	BLK FRT	3/8	HD FRT	1/2	FLG FRT	BALL	BALL	
A284030	283641	279663	281543	245888	245889	276127	NONE	243598	235418	LEFT	TOP	BOTH PLGD	BLK FRT	3/8	HD RR	1/2	BOTTOM RR	SLEEVE	SLEEVE	

A —ADD STR. PLATE 238948, ONE (1) STR. GASKET 236170.

CONN. ROD MATL IS ALUM.

B —ADD DRAIN COCK 237705, ONE (1) ADAPTER 237326, ONE (1) GOV. GASKET 236577, TWO (2) L.W. 237648, TWO (2) CAP SCREW 236616.

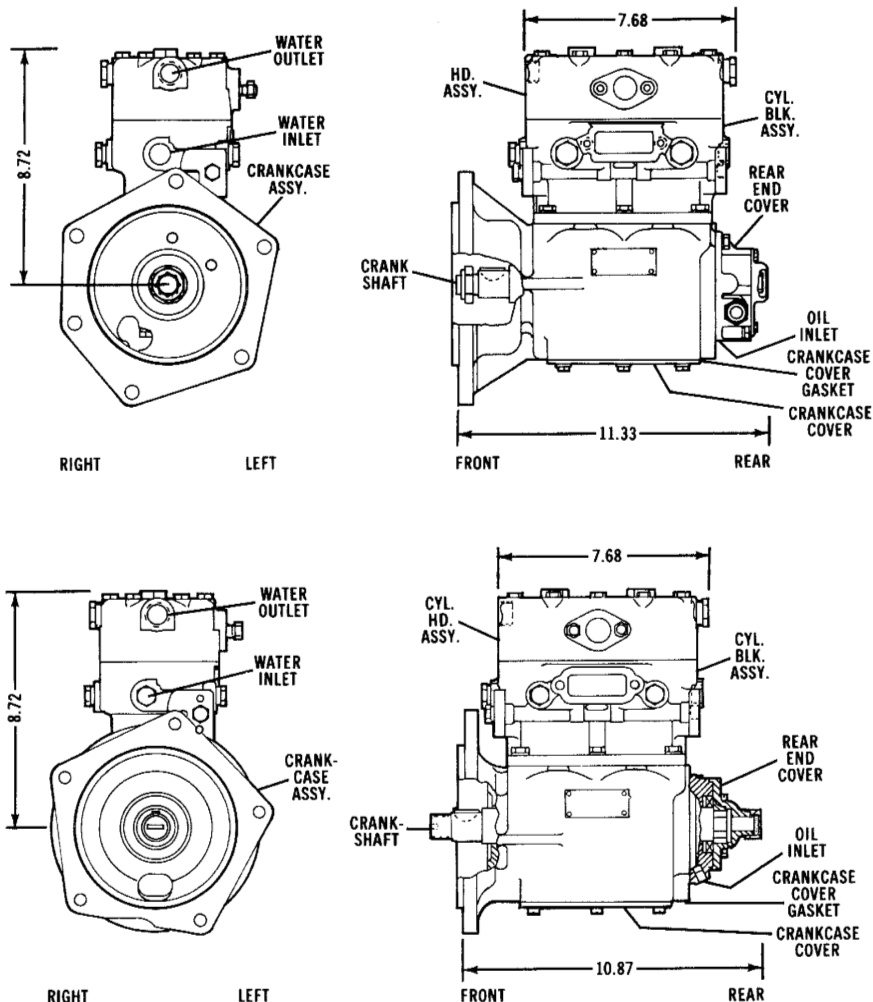
REMFR. EXCH. AND CHANGEVER SELECTIONS

TF-600 COMPR. PC. NO.	STD. REMFR. EXCH.	OPTIONS	CHANGEVER TO/FROM		
			TF-500 EQUIV.	TF-501 EQUIV.	TF-700 EQUIV.
282340	284030	282340 SUPERSEDED BY 284030	281541	—	—
283317	283317	—	—	—	—
284030	284030	—	281541	—	—

CYL. HD. ASSY.	CYL. HD. BODY ASSY.	CYL. HD. BODY
227453	227454	237695
283615	283618	247845
283641	283638	247848

CYL. BLK. ASSY.	CYL. BLK. BODY ASSY.	CYL. BLK. BODY
279663	279664	244362
280430	280431	245005

## IHC FLANGE MOUNT WITH TACH DRIVE



TF-600 COMPR. PC. NO.	CYL. HEAD ASSY.	CYL. BLOCK ASSY.	CRANK- CASE ASSY.	CRANK- CASE BODY	CRANK- SHAFT	REAR END COVER	AIR INLET LOCATION	AIR DISCH. LOCATION	WATER PORTS			
									INLET	SIZE	OUTLET	SIZE
A281531	283615	279663	280564	245100	245098	280563	LEFT	LEFT	BLK RR	3/8	HD FRT	1/2
B283988	283615	279663	282939	246975	246976	283418	LEFT	LEFT	BLK RR	3/8	HD FRT	1/2
B283989	283615	279663	282939	246975	246976	283418	LEFT	LEFT	BLK FRT	3/8	HD FRT	1/2

## A —ADD THE FOLLOWING TACH. DRIVE PARTS:

1	245086	TACH. DRIVE COVER	1	245091	CAP NUT
4	245084	HH MACH. SCREW & L.W.	1	245088	HELIX DRIVE GEAR
1	245087	GASKET	1	244440	RETAINING RING
4	239588	HH CAP SCREW	1	214901	WOODRUFF KEY
1	280559	HELIX DRIVEN GEAR	1	245085	OIL SEAL RING
1	280561	SLEEVE ASSY.			

## B —ADD THE FOLLOWING TACH. ADAPTER ASSY. PARTS:

1	247604	TACHOMETER ADAPTER	4	238117	HH CAP SCREW
1	230425	OIL SEAL	1	248008	GASKET
4	202981	LOCK WASHER	1	248009	END CAP

DISCHARGE STUD IS 235464  
 CRANKCASE COVER IS 214789  
 CRANKCASE COVER GASKET IS 235418  
 GOVERNOR PORT POSITION IS LEFT REAR  
 OIL INLET LOCATION IS BOTTOM REAR  
 BEARINGS FRONT & REAR ARE SLEEVE  
 CONN. ROD MATL IS ALUM.

## REMFR. EXCH. AND CHANGEVER SELECTIONS

TF-600 COMPR. PC. NO.	STD. REMFR. EXCH.	OPTIONS	CHANGEVER TO/FROM		
			TF-500 EQUIV.	TF-501 EQUIV.	TF-700 EQUIV.
281531	281531	—	280565	—	—
283988	283989	—	282938	—	—
283989	283989	283988	284037	—	—

TF-600 COMPRESSOR  
WATER COOLED HEAD — AIR COOLED BLOCK

ORIG. EQUIP. PC. NO.	SUPER- SEDED BY TF-600	COMPR. TYPE	REMARKS
280780	285331	MACK FLANGE	WATER COOLED HEAD — AIR COOLED BLOCK TF-600 COMPRESSORS ARE SUPERSEDED BY ALL WATER COOLED TF-600's.
281470	—	MACK FLANGE	
282800	284306	MACK FLANGE	
283002	284306	MACK FLANGE	
283004	285099	MACK FLANGE	
283820	285331	MACK FLANGE	
283824	284306	MACK FLANGE	
283825	284306	MACK FLANGE	
284369	285100	MACK FLANGE	
280283	281701	VERTICAL	
280286	281751	VERTICAL	
281990	282460	VERTICAL	
280282	280891	DDAD 0° TILT FLANGE	