

R-12P PILOT RELAY VALVE

CATALOG
03-B-4J

The R-12P Pilot Relay Valve is designed to reinforce and equalize the control signal on long non-towing trailers, towing trailers and dollies. It replaces the current R-8P.

Unlike a standard relay valve used as a "booster," which typically has a 2-4 psi differential between control and delivery, the R-12P has zero differential. It "speeds" the control line signal and delivers the same air pressure that it receives. This provides a uniform brake signal to all trailer and dolly brakes, even during light applications.

By balancing the pressure signal to all trailer and dolly brakes, the R-12P aids in achieving overall vehicle brake balance and stability. It also substantially improves brake lining wear balance on combination vehicles by making even the most distant brake contribute its share of braking effort.

The R-12P uses the R-12-family lower body and standard Bendix mounting bracket. It can also be reservoir-mounted. (NOTE: If the R-12P is reservoir-mounted, use a Schedule 80 heavy wall, short couple pipe nipple to secure the valve to the reservoir.) The body and cover are die-cast aluminum.

For service and maintenance information, refer to service manual SD-03-1063 (form number BW 1704).

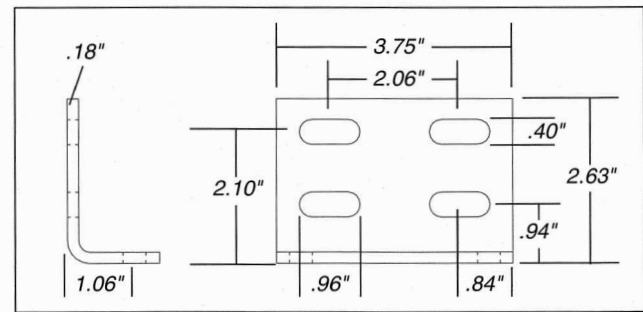
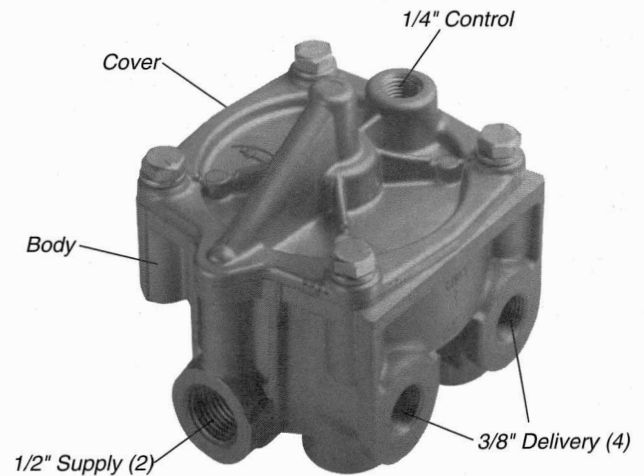
VMRS Number: 13-010-009

Device Code: 1063

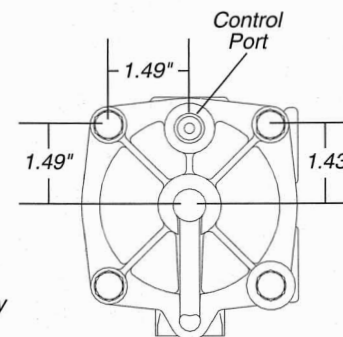
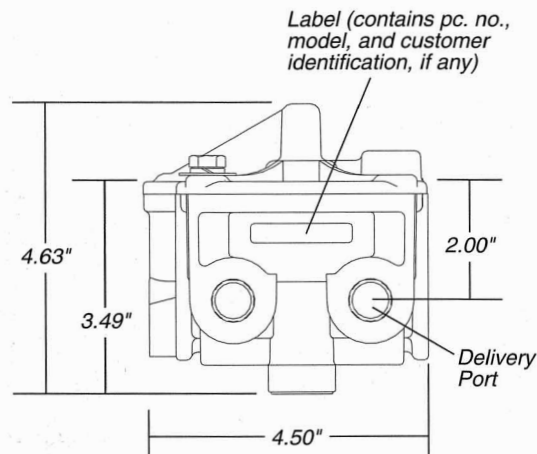
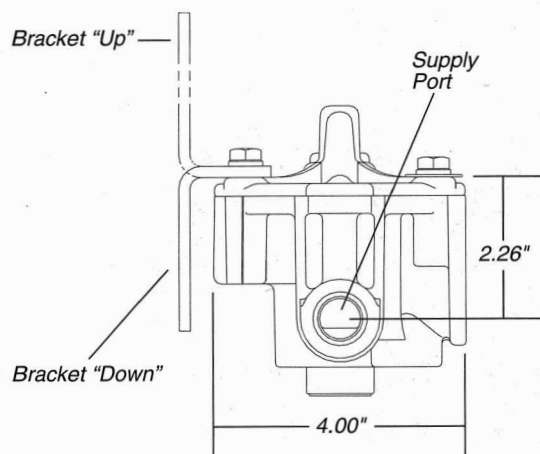
Weight: Approx. 2.1 lbs. without bracket
2.7 lbs. with bracket

Operating pressure: 150 psig max.

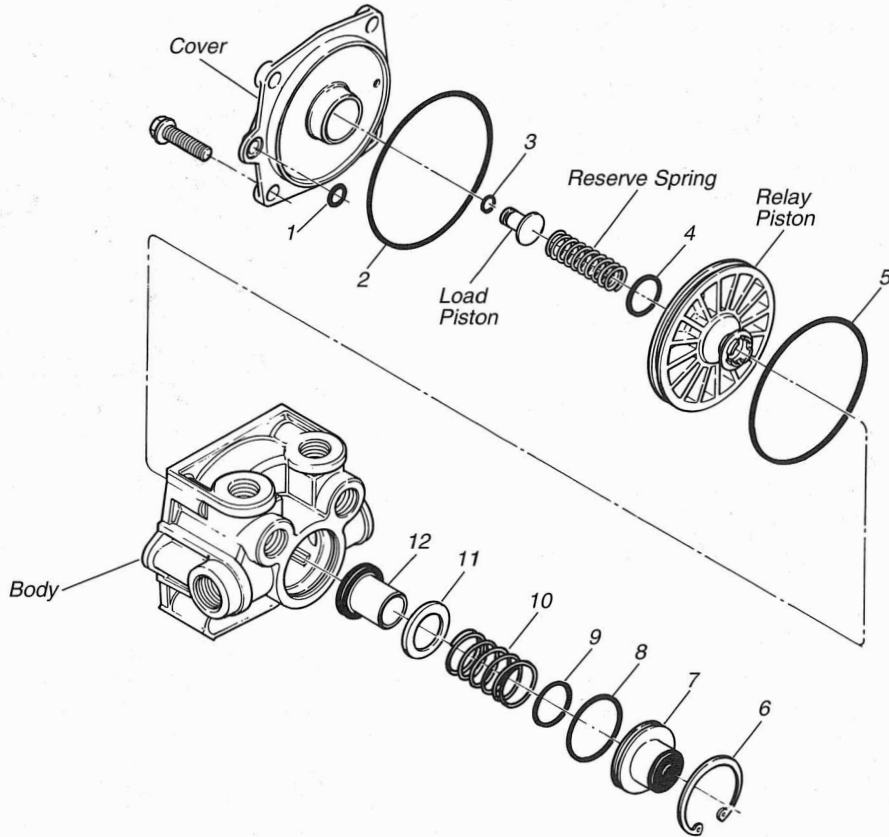
Operating temperature: -40 to 200 degrees F.



Bracket



OE Pc. No.	SVC Pc. No.	Reman. Pc. No.	Customer ID	Bracket	Bracket Position
109001	065476	109264			
109002	065476	109264		296010	Down
109424	065476	109264		296010	Up
109446	065476	109264	Ford F4HS-2A449-AA	296010	Down



Maintenance Kit 109265 consists of:

Key No.	Qty.	Description
1	1	O-Ring
2	1	O-Ring
3	1	O-Ring
4	1	O-Ring
5	1	O-Ring
6	1	Snap Ring
7	1	Exhaust Cover
8	1	O-Ring
9	1	O-Ring
10	1	Valve Spring
11	1	Valve Retainer
12	1	Inlet/Exhaust Valve
—	1	Silicone Grease Tube

