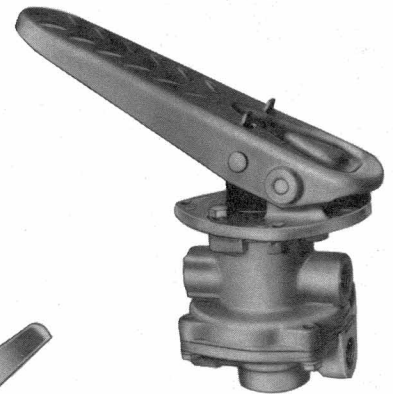


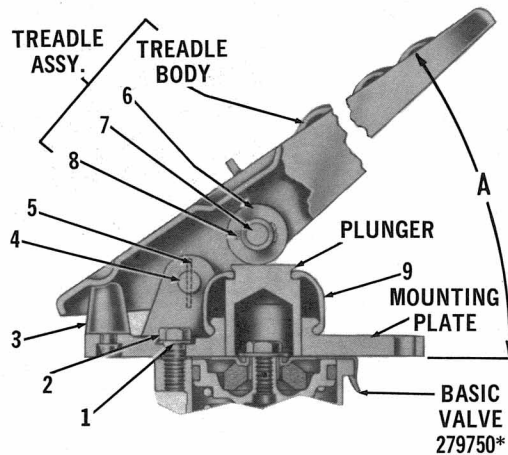
The Brake Valve is a graduating directional control valve and is generally used to control all the service brakes on a vehicle. The most popular configuration utilizes a pedal. However, other types of actuating means are available.

Dual brake valves such as the E-4 are used in dual or split systems.

For installation and maintenance information, see Instruction and Service Data Sheet SD-47.



NO.	PC. NO.	QUAN.	DESCRIPTION
1	202982	3	Lock Washer
2	202979	3	Cap Screw
3	236980	1	Stop Button
4	238888	1	Fulcrum Pin
5	235212	1	Roll Pin
See Schedule		1	Treadle Assembly
See Schedule		1	Treadle Body
6	236288	1	Roller
7	238474	1	Roller Pin
8	210492	1	Cotter Pin
9	236982	1	Boot



*SEE BACK OF PAGE
FOR BASIC VALVE DETAILS

TYPE E-4 DUAL BRAKE VALVE O.E. PC. NO.	REMFR. EXCH. (BASIC)* PC. NO.	REFERENCE DETAILS					
		TREADLE & MTG. PLATE ASSY. PC. NO.	TREADLE ASSY. PC. NO.	TREADLE BODY PC. NO.	PLUNGER PC. NO.	MTG. PLATE PC. NO.	A DEG.
A279757	279750	279751	228484	228281	236981	236979	27
280037	279750	280038	226834	226835	236981	236979	34
280246	279750	279751	228484	228281	236981	236979	27
281418	279750	281433	NONE	NONE	236981	236979	—
B282330	279750	—	226834	226835	236981	236979	34
B283846	279750	—	228484	228281	236981	236979	27
285569	279750	280038	226834	226835	236981	236979	34
C286208	279750	285825	283659	275460	235814	243807	17

A—Add Mounting Plate, 244433.

B—Add Mounting Plate, 246025.

C—Uses Stop Button, 239512 & Lock Nut, 230903.

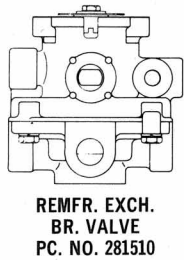
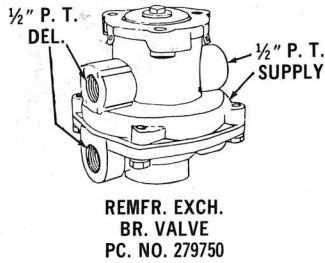
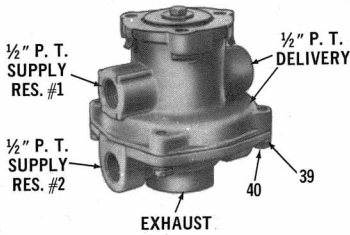
E-4 BRAKE VALVE CONVERSION LIST

O.E. PC. NO.	REMFR. EXCH. PC. NO.
279750	279750
279757	279750
280037	279750
280246	279750
280459	279750
280578	279750
280755	279750
280756	279750
281136	279750
281388	279750

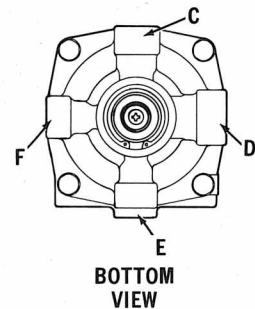
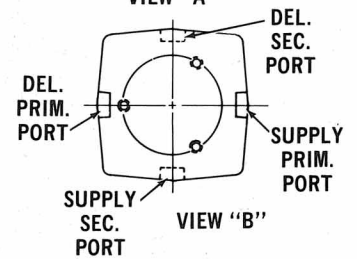
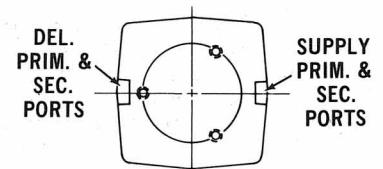
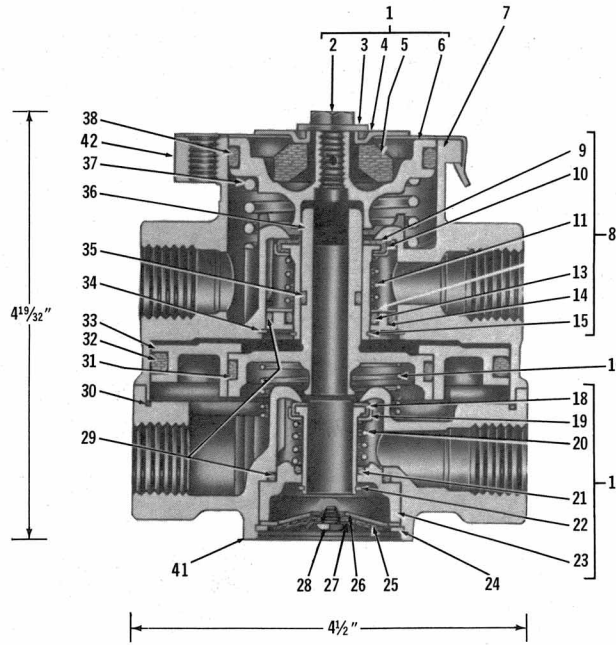
O.E. PC. NO.	REMFR. EXCH. PC. NO.
281418	279750
281423	279750
281424	279750
281445	281510
281510	281510
281571	279750
281752	279750
281574	281574
281575	281574
281856	279750

O.E. PC. NO.	REMFR. EXCH. PC. NO.
281904	281904
282330	279750
282855	282855
282856	282855
283322	279750
283846	279750
284354	279750
285569	279750
286208	279750
286524	279750

**All Pc. Nos. Listed on this Page
Are Available in Min. Qtys. per Price List.**



TOP PORTION HAS 3/4", & 1 1/2"
PRIM. SUPP. PORTS, 1 1/2", & 1 3/8"
PRIM. DEL. PORTS
BOTTOM PORTION HAS
2 1/4", 1 3/8" &
1 1/2" SEC. SUPP. PORTS



TYPE E-4 BASIC DUAL BRAKE VALVE PC. NO.	REMFR. EXCH. PC. NO.	REFERENCE DETAILS					FOR SERVICE USE PC. NO.
		VIEW	C (P. T.) SECONDARY DEL.	D (P. T.) SECONDARY SUPPLY	E (P. T.) SECONDARY SUPPLY	F (P. T.) SECONDARY SUPPLY	
A279750	279750	A	NONE	1/2	NONE	1/2	279750
AB281136	279750	A	NONE	1/2	NONE	1/2	279750
281510	281510	—	3/8	1/2	1/4	1/4	281510
A281904	281904	B	NONE	1/2	NONE	1/2	281904

A—Substitute One (1) O-Ring, 238831 For One (1) Of Item 31 (Lower)

B—Customer Identified—See Last Column. Add Three (3) Each Of The Following:
Stud, 212292, Nut, 203145 & L.W. 202982.

MAJOR MAINTENANCE KIT 289332

NO.	QTY. REQ.	DESCRIPTION	NO.	QTY. REQ.	DESCRIPTION
1	1	Piston Ass'y	14	1	O-Ring Retainer (Upper)
2	1	Cap Screw	15	1	Retainer Ring
3	1	Washer	16	1	Relay Piston Retainer Ring
4	1	Spring Seat	17	1	Inlet & Exh. Vlv. Ass'y (Lower)
5	1	Rubber Spring	18	1	Inlet & Exh. Vlv. (Lower)
6	1	Piston	19	1	Valve Retainer
7	1	Retainer	20	1	Lower Valve Spring
24	1	Retaining Ring	21	1	O-Ring
33	1	Outer Relay Piston	22	1	Retaining Spring
34	1	Retaining Ring	23	1	Lower Valve Guide
36	1	Inner Relay Piston	25	1	Exh. Check Valve Seat
			26	1	Exh. Check Valve
			27	1	Diaphragm Washer
			28	1	Screw
			29	1	O-Ring
			30	1	O-Ring
			31	1	O-Ring
			32	1	O-Ring
			35	1	O-Ring
			37	1	Piston Return Spring
			38	1	O-Ring

Note: Items 41 & 42 (Body) Not Serviceable

**FOLLOWING PC. NOS. AVAILABLE ONLY
IN MIN. QTYS. SEE PRICE LIST FOR QTYS.**

NO.	PC. NO.	QTY. REQ.	DESCRIPTION
39	237648	4	Lockwasher
40	203414	4	Cap Screw

Additional Pc. Nos. Listed on this Page
Are Available in Min. Qtys. per Price List.

MINOR MAINTENANCE KIT 281218

NO.	QTY. REQ.	DESCRIPTION
8	1	Inlet & Exh. Valve Ass'y (Upper)
9	1	Inlet & Exh. Valve (Upper)
10	1	Valve Retainer (Upper)
11	1	Upper Valve Spring
13	1	O-Ring
29	1	O-Ring