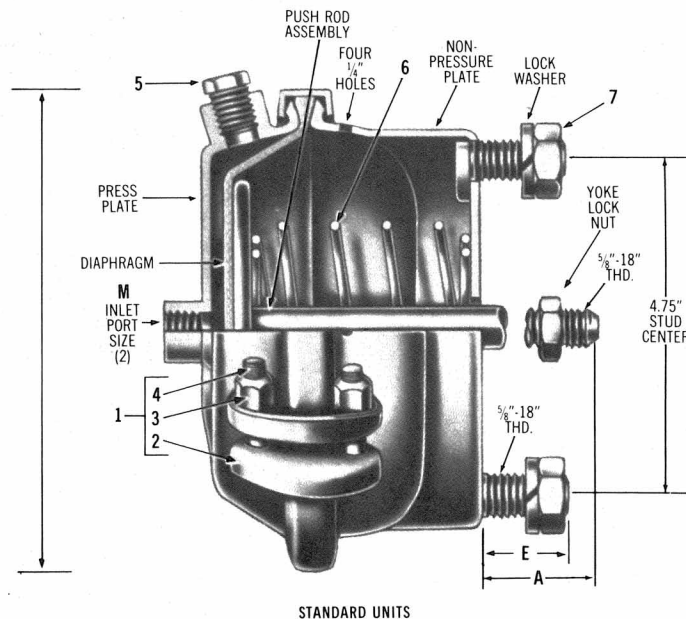
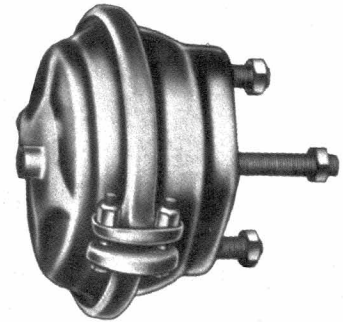


**SERVICE REPLACEMENT
BRAKE CHAMBERS
TYPE 20
2 1/4" STROKE**

A Brake Chamber is an actuator which converts the energy of air pressure into a mechanical force. Brake Chambers are available in nine sizes, providing a wide range of output forces and strokes. The type of chamber indicates the diaphragm's effective area (Type 30 = 30 sq. in. effective area).

For further information regarding installation and maintenance, consult Instruction & Service Data Sheet SD-02-1.

**SEE CONVERSION LIST
ON BACK OF PAGE.**



STANDARD UNITS

SERVICE CHAMBERS:
(1) Have long threaded Push Rod that may be cut to length.
(2) Do not include Yoke.

REFERENCE DETAILS

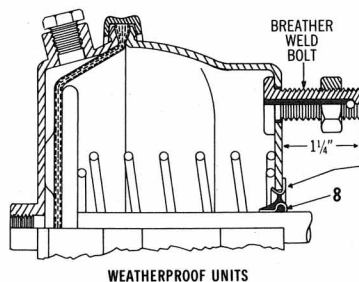
No.	Pc. No.	Quan.	Description
STANDARD UNITS			
1	227744	1	Clamp Ring Assy.
2	237890	1	Clamp Ring
3	237887	2	Nut
4	237886	2	Bolt
5	230111	1	Pipe Plug, 1/4"
6	234129	1	Spring
7	204781	2	Nut

WEATHERPROOF UNITS

Add:			
8	235768	1	Grommet

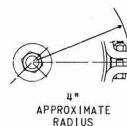
BOOT UNITS

Add:			
9	239496	1	Boot

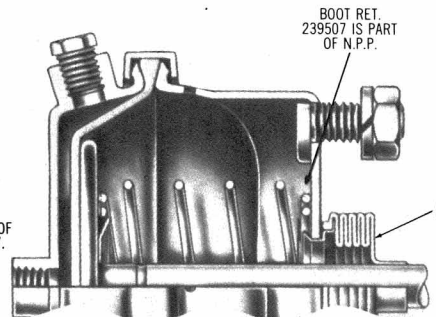


WEATHERPROOF UNITS

PUSH ROD SEAL 225805 IS INCLUDED IN WEATHERPROOF NON-PRESSURE PLATE ASSY.



4" APPROXIMATE RADIUS



BOOT UNITS

SPRING LOAD

SPRING	LOAD AT 0" STROKE	LOAD INCREASE PER INCH OF STROKE
PC. NO.	(LBS.)	(LBS.)
234129	25.25	6.25
246231	39.5	6.75

TYPE 20 SERVICE BRAKE CHAMBER PC. NO.	PUSH ROD ASSY. PC. NO.	YOKE ASSY. PC. NO.	YOKE LOCK NUT PC. NO.	LOCK WASHER (2 REQ'D.) PC. NO.	NON-PRESSURE PLATE PC. NO.	DIAPHRAGM PC. NO.	A ROD END TO PLATE	E STUD END TO PLATE	M INLET PORT SIZE	PRESSURE PLATE PC. NO.	INLET LOCATION	FEATURES
STANDARD UNITS												
A 287571	225599	NONE	204781	NONE	277450	236666-N	4.62	1.00	3/8	287285	SIDE	HVY. SPRING — NEOPRENE DIA.
288803	288785	NONE	204781	202986	225972	234099-R	10 1/2	1.50	3/8	285429	C & S	STD. UNIT
288804	288785	NONE	204781	202986	225972	236666-N	10 1/2	1.50	3/8	285429	C & S	NEOPRENE DIAPHRAGM
WEATHERPROOF UNITS												
228912	226966	NONE	NONE	202986	225953	236666-N	3.00	1 1/2	1/4	225642	SIDE	NEOPRENE DIAPHRAGM
288805	288785	NONE	204781	202986	225953	234099-R	10.50	1 1/2	3/8	285429	C & S	STD. W. P. UNIT
BOOT UNITS												
B 287491	282508	228790	204781	202986	229174	236666-N	4.25	1.50	3/8	287285	SIDE	HVY. SP. — NEO. DIA.
C 288806	288785	NONE	204781	202986	229174	234099-R	10 1/2	1.50	3/8	287429	C & S	STD. BOOT UNIT
C 288807	288785	NONE	204781	202986	229174	236666-N	10 1/2	1.50	3/8	287429	C & S	NEOPRENE DIA.

A-NON-PRESSURE PLATE HAS ONE (1) 1" DRAIN HOLE.
B-SUBSTITUTE SPRING, 246231 FOR ITEM 6.
C-ADD SPRING GUIDE, 236554.

N-NEOPRENE
R-RUBBER

**BRAKE CHAMBERS NOT AVAILABLE
IN REMANUFACTURED EXCHANGE.**

TYPE 20 BRAKE CHAMBER PIECE NUMBER CONVERSION LIST

ORIG. EQUIP. PC. NO.	SERVICE REPLACEMENT	
	SERVICE CHAMBER PC. NO.	YOKE ASSY. PC. NO.
STANDARD UNITS		
225925	288803	NONE
225932	288803	228790
226059	288803	NONE
226060	288803	228790
226229	288803	NONE
226230	288803	NONE
226427	288803	NONE
226703	288803	228790
227308	288803	228790
227443	288803	228790
228024	288803	239149
228662	288803	239149
228921	288803	228790
229557	288803	228790
275319	288803	239149
275495	288803	228790
279646	288803	228790
286809	288804	NONE
287300	288803	228790
287318	288803	228790
287484	288803	NONE
287496	288803	NONE
287521	288803	NONE
287522	288803	228790
287523	288803	228790
287524	288803	NONE
287525	288803	228790
287526	288803	239149
287527	288803	228790
287528	288803	239149
287529	288803	239149
287563	288803	239149
287568	288804	NONE
287569	288804	NONE
287570	287571	NONE
287571	287571	NONE
287572	288804	NONE
287573	288804	NONE
287608	288803	228798
287776	288803	NONE
287777	288803	NONE
287778	288803	NONE
287781	288803	NONE
288093	288804	NONE
288094	288804	NONE
288278	288803	NONE
288351	288803	NONE

ORIG. EQUIP. PC. NO.	SERVICE REPLACEMENT	
	SERVICE CHAMBER PC. NO.	YOKE ASSY. PC. NO.
WEATHERPROOF UNITS		
226380	288805	NONE
226894	288805	NONE
226959	288805	NONE
227460	288805	NONE
228453	288805	NONE
228912	228912	NONE
280068	288805	NONE
286715	288805	228790
287601	288805	NONE
288073	288805	228790

ORIG. EQUIP. PC. NO.	SERVICE REPLACEMENT	
	SERVICE CHAMBER PC. NO.	YOKE ASSY. PC. NO.
BOOT UNITS		
229169	288807	NONE
229300	288806	NONE
275416	288807	NONE
275417	288807	NONE
280593	288807	228799
282470	287491	228790
282471	287491	228790
282869	288806	228790
283818	288807	228790
283819	288807	228790
287488	288806	NONE
287489	288807	NONE
287490	288807	NONE
287491	287491	228790
287492	287491	228790
287493	288806	228790
287494	288807	228790
287495	288807	228790