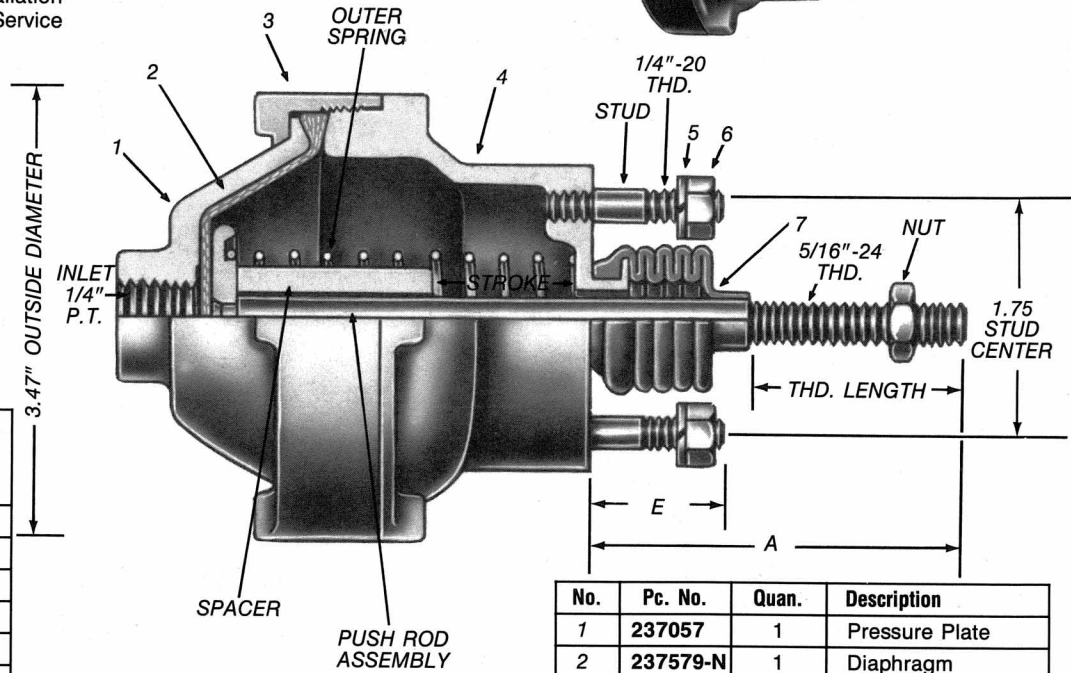
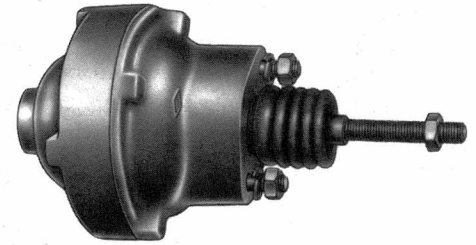


A Brake Chamber is an actuator which converts the energy of air pressure into a mechanical force. Brake Chambers are available in nine sizes, providing a wide range of output forces and strokes. The type of chamber indicates the diaphragm's effective area (Type 30 = 30 sq. in. effective area).

For further information regarding installation and maintenance, consult Instruction & Service Data Sheet SD-28.



### SPRING LOAD

SPRING PC. NO.	LOAD AT 0" STROKE (LBS.)	LOAD INCREASE PER INCH OF STROKE (LBS.)
237062	10	5
237063	25	20
238697	21	22
241632	25	18.25
241702	0	100
246514	0	65
249880*	55	41
249881*		
247175	40	105

\* THESE SPRINGS USED IN THE COMBINATION SHOWN MAKE THE FORCES LISTED.

No.	Pc. No.	Quan.	Description
1	237057	1	Pressure Plate
2	237579-N	1	Diaphragm
3	237065	1	Clamping Ring
4	237064	1	Non-Pressure Plate
5	202981	2	Lock Washer
6	203147	2	Stud Nut
7	237066	1	Boot

N-Neoprene

TYPE 3 BRAKE CHAMBER PC. NO.	PUSH ROD ASSY. PC. NO.	SPACER PC. NO.	OUTER SPRING PC. NO.	STUD (2 REQ'D.) PC. NO.	PUSH ROD NUT PC. NO.	A ROD END TO PLATE	THREAD LENGTH	E STUD END TO PLATE	STROKE (INCHES)	SPRING LOAD AT FULL STROKE (LBS.)
226926	226923	NONE	237062	237069	211192	2.50	1.75	1.00	1.62 FULL	18
226927	226929	237067	237063	200886	211192	3.00	1.75	.66	1.12	47
226928	226929	237068	237063	200886	211192	3.00	1.75	.66	.88	42
A 227588	226929	NONE	237062	237069	211192	3.00	1.75	1.00	1.62 FULL	18
228375	228376	238696	238697	214758	203545*	5.50	4.00	1/16	17/16	53
B 276088	276936	NONE	241702	214433	211192	2.50	1.75	.75	1.12	81
276760	277253	241633	241632	237069	211192*	3.00	2.00	1.00	1.50	52
280552	277849	245075	241632	237069	211192	2.16	1.25	1.00	1.31	49
A 284274	284254	NONE	NONE	237069	211192	1.75	.62	1.00	1.62 FULL	0
CD 285769	277849	249882	249880	200886	211192	2.16	1.25	.66	.88	91
B 286982	288482	NONE	241702	214433	211192	2.16	1.75	.75	1.12	94
B 282047	282143	NONE	246514	214433	211192	2.16	1.75	.75	1.12	54
289279	226923	245644	247175	214433	211192	2.50	1.75	.75	1.00	169
B 103728	282143	NONE	237062	214433	211192	2.16	1.75	.75	1.12	16
B 104259	276936	NONE	237062	214433	211192	2.50	1.75	.75	1.12	16

A-OMIT ITEM 7.

B-SPACER IS PART OF PUSH ROD ASSY.

C-ADD WASHER, 247183 BETWEEN SPRINGS & PUSH PLATE

D-ADD INNER SPRING, 249881.

\*TWO (2) REQUIRED

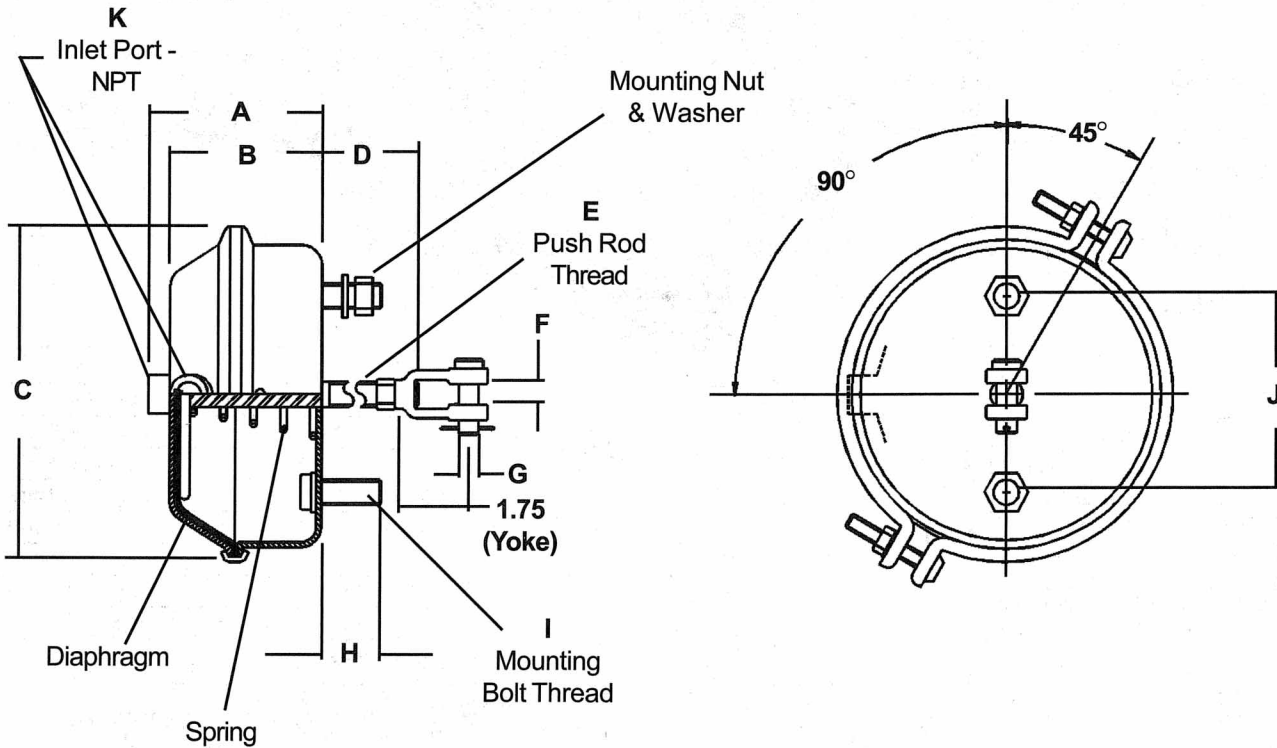
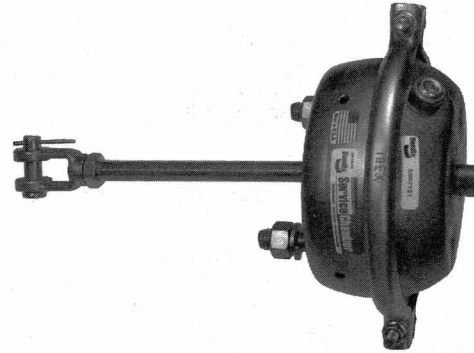
**BRAKE CHAMBERS NOT AVAILABLE IN REMANUFACTURED EXCHANGE.**

**YOKES, SPRINGS, BOOTS & DIAPHRAGMS SHOWN ON CATALOG 02-J-1**

A Brake Chamber is an actuator which converts the energy of air pressure into mechanical force. Brake Chambers are available in a variety of sizes providing a wide range of output forces and strokes. The type of chamber indicates the diaphragm's effective area (Type 30 = 30 square inches effective area).

For Installation and Maintenance Information, see SD-02-1302.

VMRS No. 13-010-034



**Dimensions**

Service Pc. No. w/Yoke*	Service Pc. No. w/out Yoke	Dia-phragm	Model/ Size	'A'	'B'	'C'	Push Rod 'D'	'E'	Mounting Bolt 'H'	'I'	'J'	Inlet Port 'K'	Stroke
5007117	800822	234226	T-12	3.45	2.95	5.80	8.5	1/2-20	1.25	7/16-20	3.0	1/4	1.75
5007118	800823	234189	T-16	4.15	3.60	6.45	8.0	1/2-20	1.25	7/16-20	3.0	1/4	2.25
5007119	800824	234099	T-20	3.80	3.30	7.00	8.2	5/8-18	1.50	5/8-11	4.8	3/8	2.25
5007120	800825	234100	T-24	4.30	3.75	7.50	8.0	5/8-18	1.50	5/8-11	4.8	3/8	2.50
5007121	800826	234101	T-30	4.40	3.95	8.25	7.8	5/8-18	1.50	5/8-11	4.8	3/8	2.50
5007122	800827	234362	T-36	4.65	4.20	9.15	7.5	5/8-18	1.50	5/8-11	4.8	3/8	3.00

**Yoke Information**

*Piece No.	Dimensions Thread	'F'	'G'	Standard on Brake Chamber Pc. Nos.
205948	1/2-20	.50	.50	5007117 & 5007118
228790	5/8-18	.50	.50	5007119, 5007120, 5007121 & 5007122
228798	5/8-18	.62	.50	-